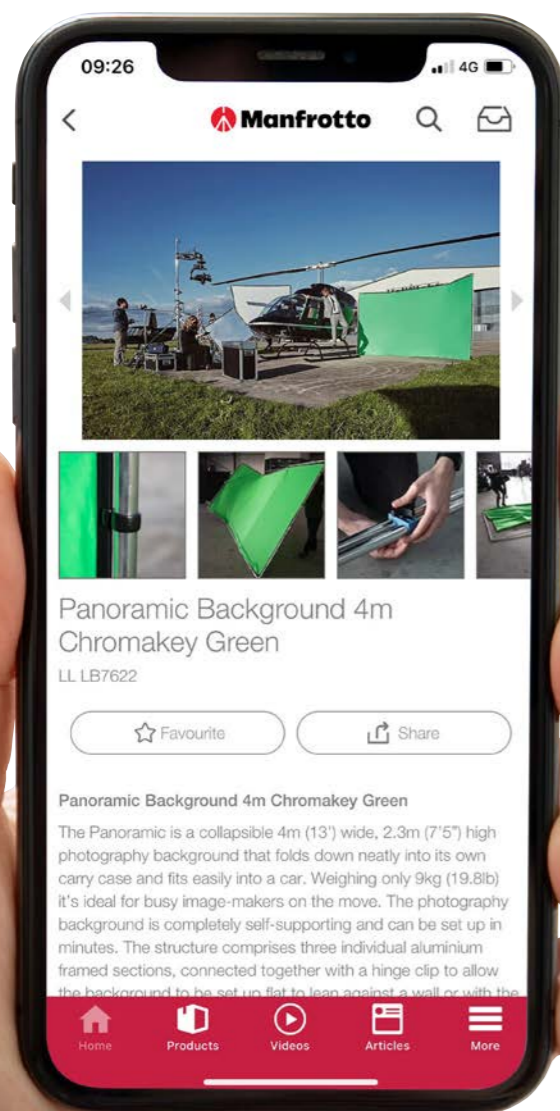


**LIGHTING CONTROLS AND
BACKGROUND SOLUTIONS**





Download our App

Download the Manfrotto App from iTunes or Play Store for the following benefits :

- Browse all of our products
- Watch our videos in one place
- Read articles and learn about new products
- Receive notifications when new content is added
- View and download product instructions



Contents

The Quality	4	Multi-fit Softboxes		Seamless Backgrounds	
Reflectors & Diffusers		Ezybox Pro	26	Superwhite Vinyl Background	50
HaloCompact	7	Ezybox Pro Strip	28	Vinyl Roll Backgrounds	51
Halo Compact Plus	9	Ezybox Pro - Octa	29	Background Supports	
TriGrip	11	Portable Backgrounds		Magnetic	52
TriFlip 8:1	12	Plain colours	30	Solo	53
TriGrip Bracket	13	Vintage Backgrounds	31	Brackets	
Trifold Umbrella	13	Urban Backgrounds	32	Tiltheads	55
TriGrip Difflector	14	Out of Focus Backgrounds	33	Lighting Stands	
Circular and Panelite Reflectors	15	EzyFrame Vintage	34	Stands	56
Bottletops 5:1	16	HiLite Backgrounds	37	Posing	
Triflector MkII	17	HiLite Bottletops	38	Posing Tubes	57
Skylite Rapid	18	Panoramic Backgrounds	40	Baby Posing	57
Skylite Rapid DoPchoice		StudioLink Chroma Key Background		Full Product Index	58
60 Degree SNAPGRID®	20	Panoramic Background Chroma Key	42		
Colour & Exposure Controls		StudioLink	44		
Skylite Rapid Accessories	22	Vinyl Backgrounds and Floors			
Aluminium Frame Support Kit	22	Vinyl Floor Strip	46		
White Balance and Exposure	23	Vinyl Background / Floor	47		
EzyBalance	23	Gaffer Tape	47		
XpoBalance	23	Chroma Key Backgrounds			
Flashgun Softboxes		Collapsibles	48		
Ezybox Hotshoe	24	Curtain	49		
Ezybox Hotshoe Accessories	25				
Ezybox Micro	25				

Connect with the world of



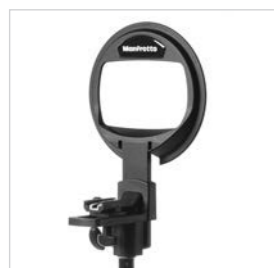
The Quality



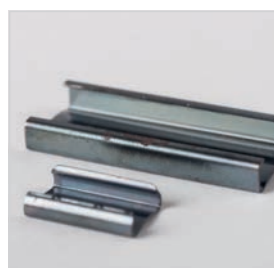
At Manfrotto we not only make a range of innovative accessories to help photographers and film-makers take great shots, but we also take pride in offering world-class products manufactured to the highest quality, ensuring they can withstand the repeated daily use of the most demanding image-maker.

To keep our leading edge, we make significant investments into research and development to ensure that we can continue to launch new and innovative products to meet the needs of the ever-changing photo and video markets. Allied to our strict quality standards and attention to detail,

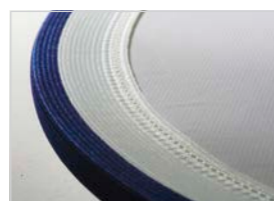
we are always looking at ways to improve the way our products are manufactured, too. We are consistently developing new ideas and technology which leads to investment in bespoke tooling and mouldings. With the vast majority of our fabric-based products made in our huge Leicestershire factory, we retain close control over quality.



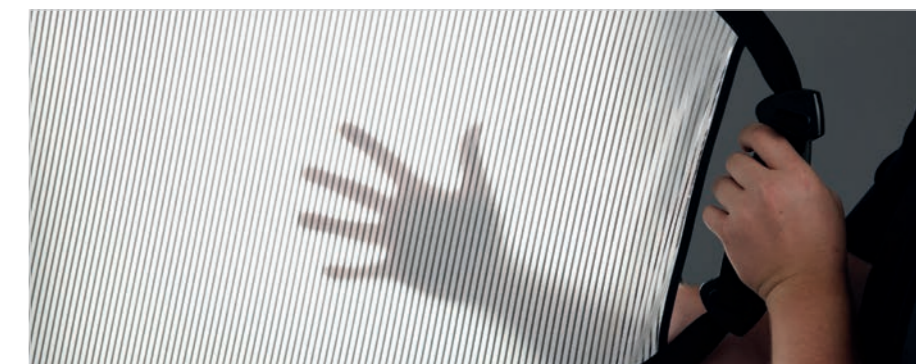
High quality sprung steel is used inside all of our collapsible products. The steel is 'dressed' to ensure all the sharp edges and dirt are removed to ensure no damage is incurred during use and provide maximum longevity. To join the ends of the steel together we use a range of specially designed, heat treated clips that guarantee a permanently strong fix for the lifetime of the product. For added peace of mind we offer a lifetime warranty on the steel rim in all of our products.



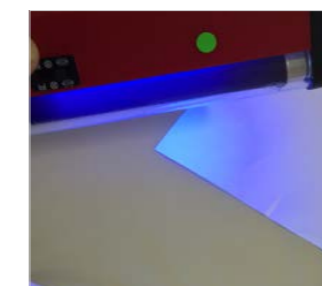
The steel rim is incorporated into our products by inserting it into our specially designed rim tape. The rim tape is made from a hard wearing, woven elasticated construction designed to withstand the typical knocks and scrapes from daily use by a busy photographer. The thick woven construction prevents the steel from wearing through and potentially weakening the structure of the product.



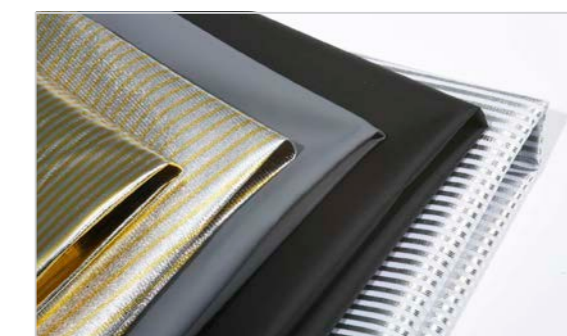
We apply the same level of detail and quality to all of our textiles as well. Each fabric is manufactured to meet the needs of the product, specifying the construction of the weave and the type of raw materials used. Each fabric is then coated or processed depending on the technical performance required. The textiles are also tested to make sure they meet the correct performance levels over repeated use and in adverse conditions. We have developed a range of over 10 different technical fabrics used to manufacture our products, including our patent protected innovative TriGrip Difflector fabric.



Our diffuser fabrics are manufactured using only the finest whiteners to reduce any chance of unwanted colourcast. The fabric is also specially coated to ensure colour balance and a uniform spread of light as it is passed through the material, avoiding typical issues such as irregular distribution and hot spots.



Our reflective surfaces are also specifically designed for our products and not general purpose textiles. We incorporate the correct level of stretch into the weave of all our fabrics to ensure the foil surface remains intact and does not crack under tension and lead to delamination. We also use the highest quality adhesive and lamination processes to ensure the foil remains bonded to the textile throughout the products lifetime and provides a uniform opaque surface to bounce the light.







And finally to hold our products together we use a triple thread, twin needle, loop stitch which provides maximum strength and durability.



PATENT PENDING HaloCompact

Features and Benefits	
▶ Ultra compact when folded down	
▶ Lightweight construction	
▶ Incorporates a 1/4" thread in the handle	
▶ Fits easily in a camera bag	

Specifications	
HaloCompact 82cm (32")	Code
Reflector Silver/White	LL LR3300
Reflector Sunlite/Soft Silver	LL LR3310
Diffuser 2 Stop	LL LR3301
Diffuser Soft Silver	LL LR3320
HaloCompact Covers 82cm (32")	Code
Reflector Cover Silver/White	LL LR3302
Reflector Cover Sunlite/Soft Silver	LL LR3311
Diffuser Cover 2 Stop	LL LR3303
Diffuser Cover Soft Silver	LL LR3321

- Silver / White 
- Sunlite/Soft Silver 
- Diffuser, 2 Stop 
- Soft Silver 

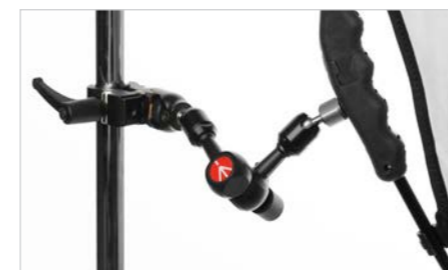
The HaloCompact boasts a patent pending design concept that makes the everyday reflector and diffuser panel even more portable than ever!

Unlike many traditional reflector/diffuser panels that incorporate a steel rim pop up design, the 82cm (32") HaloCompact is constructed using Manfrotto's new innovative RapidExoframe™ technology. The collapsible lightweight aluminium frame quickly slots together and the reflector or diffuser fabric simply clips onto the frame. The cleverly designed RapidExoframe™ construction allows the frame to breakdown into small multiple sections and along with the folded fabric packs into a carry case measuring only 6.5 x 27 x 6.5cm (2.5" x 10.5" x 2.5") weighing only 390g (reflector and case). The ultra-compact folded dimensions make the HaloCompact the perfect 'always with you' solution for Iimagemakers on the move.

The HaloCompact also features an ergonomically designed handle so it can easily be held and accurately positioned with one hand. The handle also incorporates a very useful 1/4" thread (plus a 1/4" to 1/4" adaptor), enabling it to be easily attached to various different support systems, to offer secure positioning further away from camera position.



HaloCompact Reflector Silver/White



Halo Compact Plus



Features and Benefits

- ▶ 46% larger surface area than the regular HaloCompact
- ▶ Compact pack size
- ▶ Ergonomic Grip
- ▶ Easy to set up
- ▶ Features a 1/4" thread mount (plus a 1/4" to 1/4" adaptor)

Specifications

HaloCompact Plus 98cm	Code
Reflector Silver/White	LL LR3331
Diffuser 2 Stop	LL LR3333
HaloCompact Plus Covers 98cm	Code
Reflector Cover Silver/White	LL LR3332
Diffuser Cover 2 Stop	LL LR3334

Silver / White



Diffuser, 2 Stop



The HaloCompact Plus is the perfect 'always with you' compact tool ready to be quickly deployed when its essential to take control or manipulate the light.

With a 98cm (38") diameter and a surface area over 46% larger than the regular 82cm (32") HaloCompact this new addition is the largest yet, making it ideal for photo and video shoots when working with couples, small family groups or when shooting larger still life and product set ups .

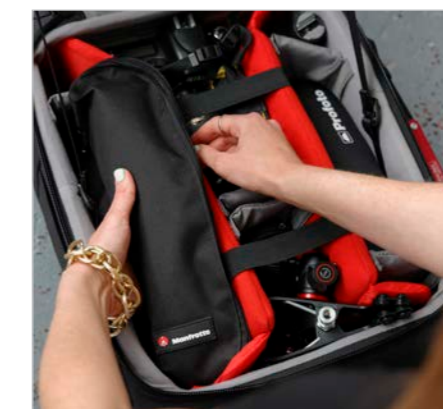
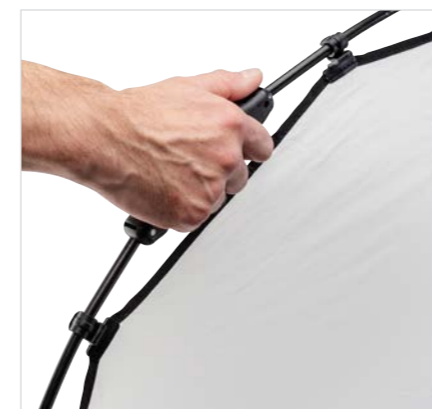
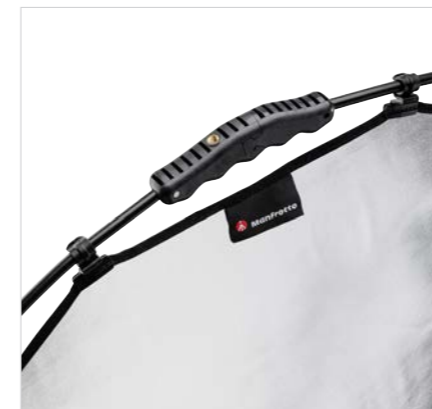
The rigid frame of the HaloCompact Plus is constructed using Manfrotto's RapidExoFrame™ technology. The collapsible lightweight aluminium frame quickly slots together and the reflector or diffuser fabric cover simply clips onto the frame using a newly designed ergonomic clip, offering more flex during assembly to make set up even easier. The cleverly designed RapidExoFrame™ construction allows the frame to breakdown into small multiple sections and along with the folded cover, packs into a carry case measuring only 29.5cm x 10.5cm x 6cm (11.6" x 4.1" x 2.3") weighing only 450g (15.8oz).

The ultra-compact folded dimensions make the HaloCompact Plus the perfect solution for imagemakers on the move or with very limited carrying space. It now means a reflector or diffuser can always be carried in a camera bag without compromising. A handy carabiner style clip also allows the user to clip the HaloCompact Plus to the outside of their camera bag so that it is always within easy reach.

The HaloCompact Plus features an ergonomically designed handle so the reflector can easily be held and accurately positioned with one hand. The handle also incorporates a very useful 1/4" thread (plus a 1/4" to 1/4" adaptor), enabling the reflector to easily attach to various support systems such as arms and light stands.

The HaloCompact Plus is also available as a 2 stop diffuser. Kits include the RapidExoFrame™, 1x cover, carry case and 1/4" to 1/4" adaptor. Covers are also available separately.

HaloCompact Plus Cover 98cm (38") 2 Stop Diffuser. A 2 stop diffuser cover only for use with the HaloCompact 98cm (38") frame.



TriGrip

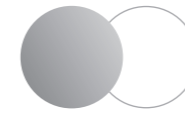


TriGrip designed by Gary Astill. A registered design.

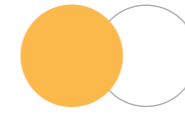
Features and Benefits

- ▶ Hold the reflector with just one hand
- ▶ Hold 2 reflectors, one in each hand
- ▶ New moulded handle with strap
- ▶ Double sided
- ▶ Collapses to a third of its original size

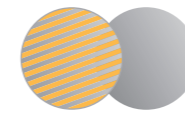
Silver / White



Gold / White



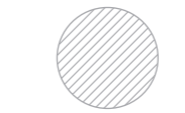
Sunfire / Silver



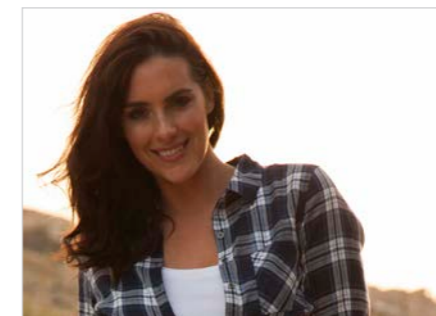
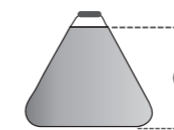
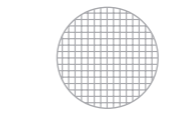
Sunlite / Soft Silver



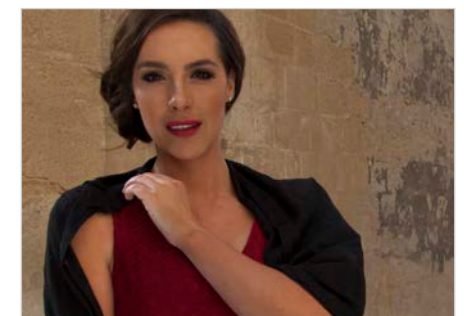
Diffuser 1 Stop



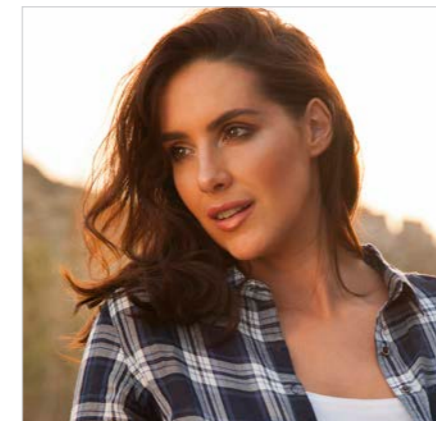
Diffuser 2 Stops



Without TriGrip



Without TriGrip



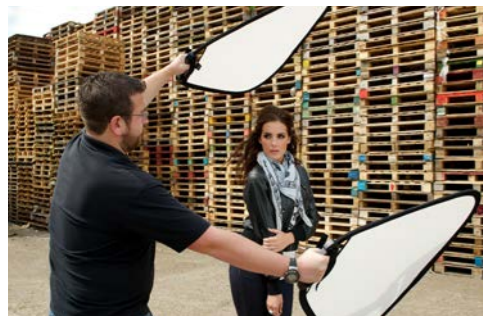
With TriGrip



With TriGrip

Specifications

TriGrip Mini	A	Code	TriGrip	A	Code
Silver / White	45cm (18")	LL LR3531	Silver / White	75cm (30")	LL LR3631
Gold / White	45cm (18")	LL LR3541	Gold / White	75cm (30")	LL LR3641
Sunfire / Silver	45cm (18")	LL LR3536	Sunfire / Silver	75cm (30")	LL LR3636
Sunlite / Soft Silver	45cm (18")	LL LR3528	Sunlite / Soft Silver	75cm (30")	LL LR3628
Diffuser, 1 Stop	45cm (18")	LL LR3551	Diffuser, 1 Stop	75cm (30")	LL LR3651
Diffuser, 2 Stops	45cm (18")	LL LR3507	Diffuser, 2 Stops	75cm (30")	LL LR3607
Collapses to 20cm (8")			Collapses to 30cm (12")		



The triangular structure of the TriGrip makes it easy to hold in one hand with the camera in the other or for an assistant to hold one in each hand.



The securing strap allows the user to support the reflector without actually gripping the handle, reducing pressure on the wrist and fingers when held for prolonged periods.



The TriFlip covers make the TriGrip even more versatile. Simply slide the TriGrip into the cover to change the surface.

TriFlip 8:1

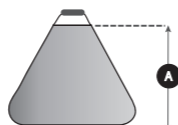
Never get caught out again, up to 8 surfaces in the same bag. The TriFlip are designed to increase the versatility of the TriGrip reflector. Simply insert the TriGrip into the TriFlip sleeve for instant access. TriFlip surfaces: Silver, White, Soft Silver, Gold, Sunfire, Sunlite and Black.



Features and Benefits
▶ Sleeves are double sided and reversible
▶ Eight different surfaces
▶ Set up in seconds
▶ Taut professional finish

Specifications		
TriFlip 8:1	A	Code
TriFlip 8:1 Kit	75cm (30")	LL LR3696

Kits contain:
 1x TriGrip 2 Stop diffuser
 2x Double sided, reversible TriFlip covers:
 - Silver / Soft Silver, Sunlite / Sunfire
 - Gold / Black, White / Black



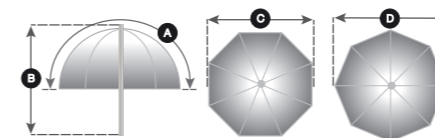
Features and Benefits
▶ Ideal for photographers who work alone
▶ Compact foldaway design
▶ Compatible with battery operated flash guns
▶ Multi position ball joint connector

Specifications	
TriGrip Bracket	Code
TriGrip Bracket*	LL LA2430

* Not recommended for use with the large TriGrip.

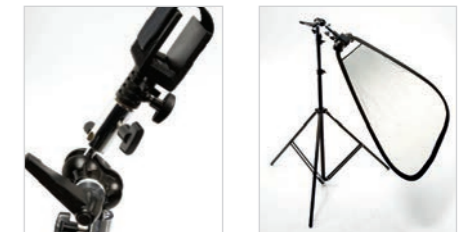


Features and Benefits
▶ 10mm (0.4") shaft
▶ Lightweight and compact
▶ Ideal for use with flashguns



The TriGrip bracket is ideal for photographers who work alone and want to support the TriGrip reflector on one of our extending handles, a lighting stand, tripod or any other type of fixing bracket (a spigot connector may be required). Simply place the moulded TriGrip handle into the bracket and secure it in place with the strap. The ball joint connector enables you to then position the TriGrip exactly where you want leaving your hands free to operate the camera.

The bracket can be used to support the TriGrip when working with ambient light or in conjunction with battery operated flash using the flash gun attachment arm to bounce light off the reflectors surface or shoot through a diffuser panel.



Trifold Umbrella

The ultimate compact shoot through umbrella for the photographer who needs to be mobile. Featuring a triple fold mechanism, the Trifold Umbrella folds down to an ultra-compact size, making it easy to slip into a camera bag. Great for using with compact flashguns.

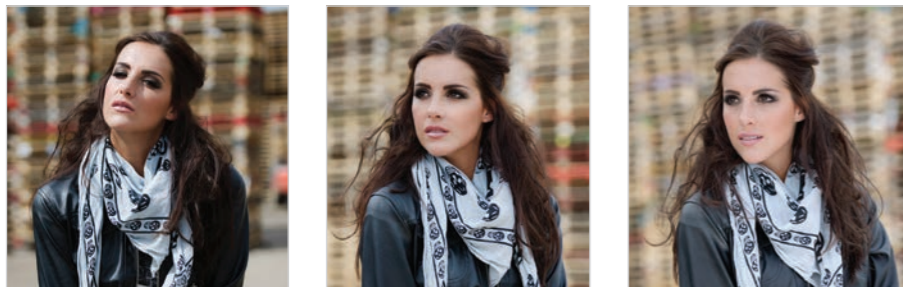


Specifications					
Style	A	B	C	D	Code
Trifold Umbrella	112cm (44")	39cm (15")	89.5cm (35")	98cm (39")	LL LU2127

TriGrip Difflector PATENTED

The TriGrip Difflector is the world's first dual purpose reflector panel which can be used as a diffuser (2.3 stops) and a bounce reflector. The unique fabric developed for this product allows light to pass through one side and bounce off the other side, making it a truly versatile product whatever the lighting conditions. The difflector is available with a Soft Silver reflective surface.

The TriGrip Difflector also features the unique TriGrip moulded handle for accurate positioning of the reflector with just one hand.



Without TriGrip Difflector With Difflector diffuser only With Difflector diffuser & Soft Silver reflector

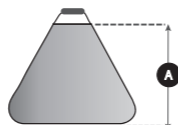


Features and Benefits

- ▶ Hold the reflector with just one hand
- ▶ Hold two reflectors one in each hand
- ▶ Use as a diffuser or a bounce reflector
- ▶ Collapses to a third of its original size

Specifications

TriGrip Difflector	A	Code
TriGrip Difflector Soft Silver	75cm (30")	LL LR3652
TriGrip Difflector Large Soft Silver	1.2m (48")	LL LR3752



Circular and Panelite Reflectors

The original and industry leading collapsible reflectors.

As well as the lifetime guarantee on reflector steel, we have also upgraded the rim tape on all reflectors to make them even more durable.



Specifications

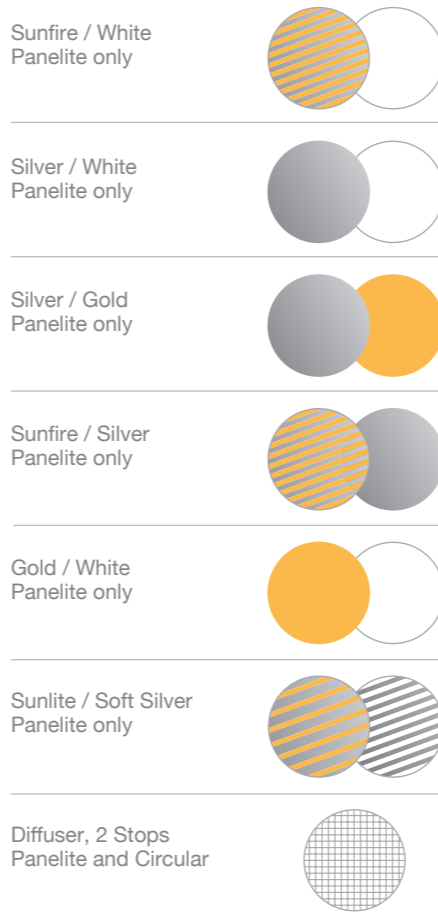
Collapsible Reflectors					Panelite
Open Sizes	50cm (20")	76cm (30")	95cm (38")	120cm (48")	1.8 x 1.2m (6' x 4')
Collapsed Sizes	24cm (9")	30cm (12")	40cm (16")	48cm (19")	64cm (25")
Sunfire / White	LL LR2006	LL LR3006	LL LR3806	LL LR4806	LL LR7206
Silver / White	LL LR2031	LL LR3031	LL LR3831	LL LR4831	LL LR7231
Silver / Gold	LL LR2034	LL LR3034	LL LR3834	LL LR4834	LL LR7234
Sunfire / Silver	LL LR2036	LL LR3036	LL LR3836	LL LR4836	LL LR7236
Gold / White	LL LR2041	LL LR3041	LL LR3841	LL LR4841	LL LR7241
Sunlite / Soft Silver	LL LR2028	LL LR3028	LL LR3828	LL LR4828	LL LR7228
Diffuser, 2 Stops	LL LR2007	LL LR3007	LL LR3807	LL LR4807	LL LR7207

Specifications

Collapsible Circular Diffusers				
Open Sizes	50cm (20")	76cm (30")	95cm (38")	120cm (48")
Collapsed Sizes	24cm (9")	30cm (12")	40cm (16")	48cm (19")
Diffuser, 2 Stops	LL LR2007	LL LR3007	LL LR3807	LL LR4807

Features and Benefits

- ▶ Collapsible / Reversible
- ▶ Lifetime rim guarantee
- ▶ Upgraded rim tape
- ▶ Six useful sizes and six essential colours
- ▶ Double-coated reflective surfaces
- ▶ Collapses to a third of its original size



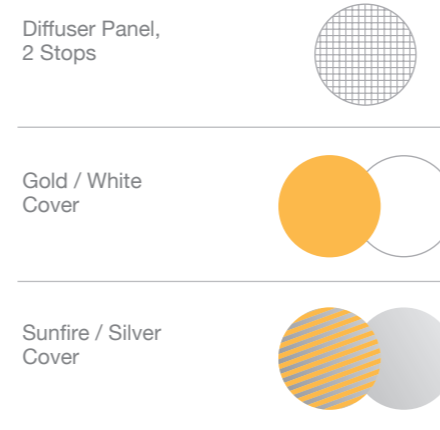
Bottletops 5:1

An innovation of Manfrotto's industry leading range of reflectors.

Simply slip the elasticated Gold / White or Sunfire / Silver cover over the reflector or diffuser to produce an instant change of colour.



- Features and Benefits**
- ▶ Sets up in seconds
 - ▶ No extra weight
 - ▶ Collapses to a third of its original size
 - ▶ Five surfaces in one bag
 - ▶ Taut professional finish



Specifications		
Bottletop Accessories	Size	Code
Diffuser with Gold / White & Sunfire / Silver cover	50cm (20")	LL LR2096
Diffuser with Gold / White & Sunfire / Silver cover	75cm (30")	LL LR3096
Diffuser with Gold / White & Sunfire / Silver cover	95cm (38")	LL LR3896

Circular and Panelite Reflector Accessories

Suitable for all reflectors and bottletops, the following accessories allow for versatile positioning.



Universal Bracket LL LA1100



Panelite Bracket LL LA1107

- Features and Benefits**
- ▶ Wind resistant clips for outdoor use
 - ▶ Adjustable in size

Specifications

Accessories	Size	Code
Universal Bracket	50cm - 120cm (20" - 48")	LL LA1100
Panelite Bracket	95cm - 180cm (38" - 72")	LL LA1107

- Features and Benefits**
- ▶ Unique quality of light
 - ▶ Weighs just over 1kg (2.2lb)
 - ▶ Three reflective panels

Specifications

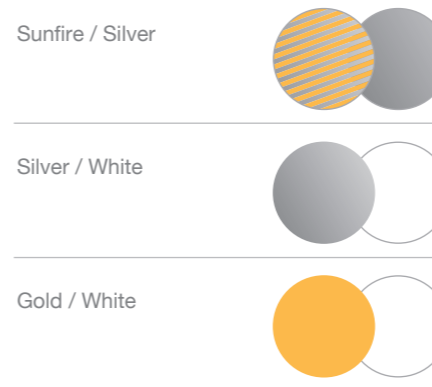
Triflector MkII	Code
Triflector Mk II - Sunfire / Silver*	LL LR2933
Triflector Mk II - Silver / White*	LL LR2933SW

* Includes adjustable framework and 3 x reflector panels

Triflector MkII Panels	Code
Set of three Gold / White reflector panels	LL LR2905
Set of three Silver / White reflector panels	LL LR2903

Triflector MkII Kit	Code
Triflector MkII with Sunfire / Silver panels & stand kit**	LL LR2933SP

** Includes adjustable framework, 3 x reflector panels and stand (LL LS1158 - see page 71)



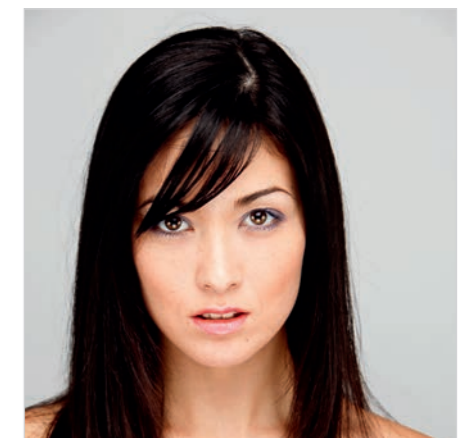
The Triflector is widely used in makeovers and fashion shots because the subject is given the Triflector's distinctive 'catch lights' to the eyes. The hinge mechanisms make all three panels individually adjustable to get light exactly where you need it. The panels each fold like our collapsible reflecting panels; the frame folds away and they all fit into a portable bag. Triflector MkII weighs only 1.2kg (2.6lb).



Triflector in use for Portrait Photography



Without Triflector



With Triflector



Using with Beautydish



Skylite Rapid

For the location photographer who needs lighting control in the most demanding situations. The Skylite Rapid's collapsible but rigid aluminium frame delivers reliable performance even in windy conditions, while the Skylite Rapid covers simply clip in place to provide maximum versatility.

The Skylite Rapid frames, fabrics and accessories are all available separately, so you can mix and match as you choose.

For greater value choose our kit. The kit contains a Silver / White reflector, 1.25 stop diffuser, frame and rigid case.

Note: All Skylite frames are compatible with the original Skylite covers and Skylite Rapid covers.



- Features and Benefits**
- ▶ Aluminium frame
 - ▶ Resistant to rust so ideal for outdoors
 - ▶ There is an elastic cord running through the aluminium, so it's impossible to lose parts or leave anything behind
 - ▶ Skylite Rapid covers clip easily into place for an impressively taut finish
 - ▶ Kits include rigid case

Silver / White

Black / White

Sunfire / White

Diffuser 0.75 Stop

Diffuser 1.25 Stop

Black Velour



With negative fill



With no negative fill



Skylite Rapid Midi Kit LL LR81544R



Skylite Rapid Frame



Clip on covers for rapid assembly



Skylite Rapid Frame Extra Large to create negative fill LL LR833

Specifications

Skylite Rapid Kits	Silver / White Reflector	1.25 Stop Diffuser	Frame	Rigid Case	Code
Skylite Rapid Small Kit	1	1	1	1	LL LR81143RC
Skylite Rapid Medium Kit	1	1	1	1	LL LR81243RC
Skylite Rapid Midi Kit	1	1	1	1	LL LR81544R
Skylite Rapid Large Kit	1	1	1	1	LL LR82243RC
Skylite Rapid Extra Large Kit		1	1	1	LL LR83344R

Skylite Rapid Frames

Skylite Rapid Frames	Weight	Size	Code
Skylite Rapid Frame Small	1.1kg (2.4lb)	1.1m x 1.1m (3'6" x 3'6")	LL LR811
Skylite Rapid Frame Medium	1.6kg (3.5lb)	1.1m x 2m (3'6" x 6'6")	LL LR812
Skylite Rapid Frame Midi	1.5kg (3.3lb)	1.5m x 1.5m (5' x 5')	LL LR815
Skylite Rapid Frame Large	2.1kg (4.6lb)	2m x 2m (6'6" x 6'6")	LL LR822
Skylite Rapid Frame Extra Large	3kg (6.6lb)	3m x 3m (10' x 10')	LL LR833

** This table is not to size. Only to show you the columns and rows required

Skylite Rapid Covers

Skylite Rapid Covers	Small Covers 1.1m x 1.1m (3'6" x 3'6") Code	Medium Covers 1.1m x 2m (3'6" x 6'6") Code	Midi Covers 1.5m x 1.5m (5' x 5') Code	Large Covers 2m x 2m (6'6" x 6'6") Code	Extra Large Covers 3m x 3m (10' x 10') Code
Black / White	LL LR81121R	LL LR81221R	LL LR81521R	LL LR82221R	
Sunfire / White	LL LR81106R	LL LR81206R		LL LR82206R	
Silver / White	LL LR81131R	LL LR81231R	LL LR81531R	LL LR82231R	
1.25 Stop Diffuser	LL LR81107R	LL LR81207R	LL LR81507R	LL LR82207R	LL LR83307R
0.75 Stop Diffuser	LL LR81101R	LL LR81201R	LL LR81501R	LL LR82201R	LL LR83301R
Black Velour	LL LR81102R	LL LR81202R		LL LR82202R	LL LR83302

Skylite Rapid DoPchoice 60 Degree SNAPGRID®

The Skylite Rapid DoPchoice 60 Degree SNAPGRID® is available in two sizes; 2x2m (6.5x6.5ft) and 3x3m (9.8x9.8ft) and compatible with the equivalent Skylite Rapid frame size.

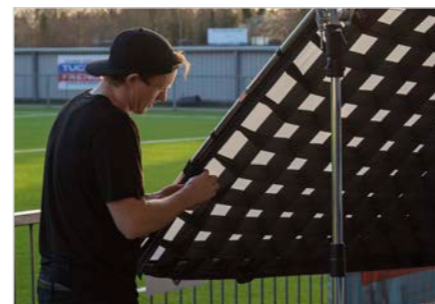
The 60-degree fabric grid design provides the user precise control over the spread of light from their Skylite Rapid diffuser panel. Ideal for professional content creators wanting to create a controlled dramatic look with a strong directional light and offering minimal spill outside of the subject area, this essential light control tool is the go-to accessory when crafting light on set.

The grid has been designed and created in collaboration with DoPchoice a leading cinema lighting control accessory manufacturer and features their patented instant set-up SNAPFRAMES, which unlike other grids ensure an instant set up and sag-free construction. It attaches to the front of a frame in seconds, using convenient elastic corner straps and secure hook and loop fastenings preventing twisted sections and ensuring even distribution of the fabric grid. Built using strong, hardwearing technical fabric and precisely manufactured to the highest quality standards, these tools are built to be used by even the most demanding professionals and created to last.

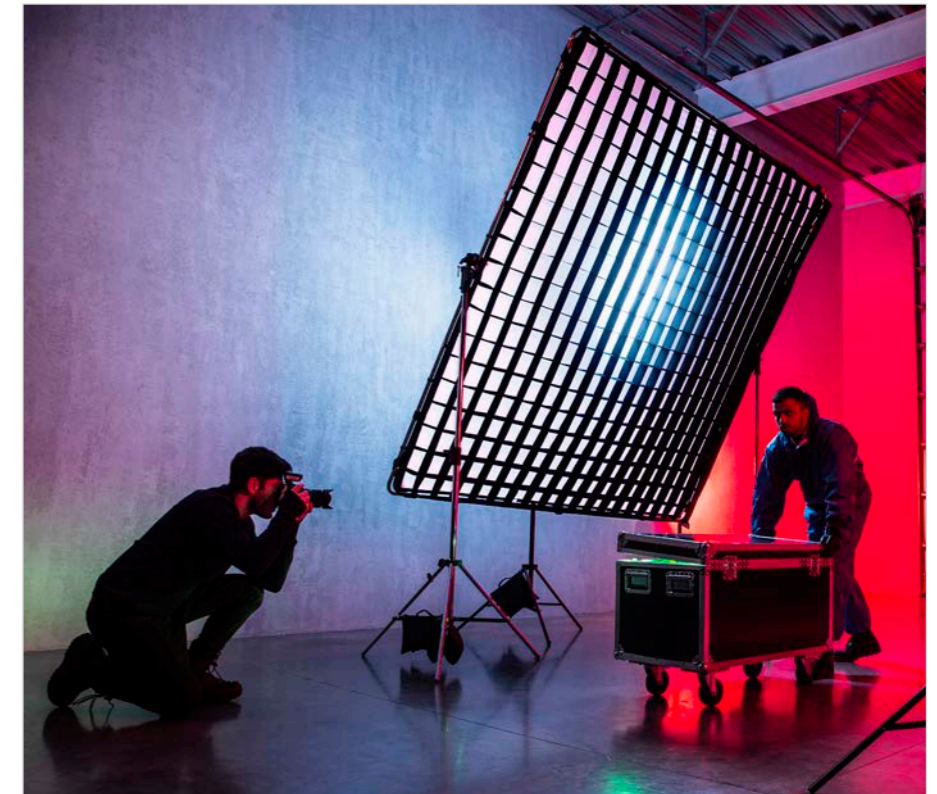
In keeping with the ethos of the rest of the Skylite Rapid range, these grids are ultra-portable and when it's time to wrap up the shoot the grid simply folds down into the included compact carry case ready for the next shoot with a packed size of just 84x24cm (33x9.4in.).

It's ultra-lightweight too, just 2.2kg (4.8lbs) for the 2x2m and 3.6kg (7.93lbs) for the 3x3m making it an ideal accessory for busy professionals wanting to keep the weight of their kit down to a minimum.

Features and Benefits	
▶	Aluminium frame
▶	Dedicated grid for the Skylite Rapid & Pro Scrim
▶	Rapid attachment and break-down
▶	DoPchoice's patented SNAPGRID® technology
▶	Folds down ultra-compact into the included carry case



Specifications			
Snap Grid	Weight	Size	Code
SkyRap DoPchoice SNAPGRID 2x2	2.2kg	2m x 2m	LL LR60SNPGRD22
SkyRap DoPchoice SNAPGRID 3x3	3.6kg	3m x 3m	LL LR60SNPGRD33



Skylite Rapid Accessories



Skylite Rapid Crossbar Handle LL LA8449



Skylite's special griphead allows it to be fixed to stands and tilted as required. LL LA8446



Skylite Rigid Cases

Skylite Rapid Accessories	Code
Aluminium Frame Support Kit	LL LA8450
Skylite Rapid Griphead	LL LA8446
Skylite Rapid Crossbar Handle	LL LA8449
Rigid Case 78cm x 19cm x 14cm	LL LRCASE775
Rigid Case 103cm x 19cm x 14cm	LL LRCASE1025
Skylite Rapid Bag	LL LA8444



Skylite Rapid Bag LL LA8444

Features and Benefits
▶ Colour correction, pre and post capture
▶ Exposure control, pre and post capture
▶ Accurate colour rendition
▶ Collapsible, durable and cleanable
▶ Double sided
▶ Unique focusing target
▶ For use with digital or film photography
▶ Collapses to a third of its original size

EzyBalance	Code
30cm (12") 18%	LL LR1250
50cm (20") 18%	LL LR2050
75cm (30") 18%	LL LR3050

Aluminium Frame Support Kit

The Aluminum Frame Support Kit is a versatile accessory compatible with the Manfrotto Skylite panels, Panoramic backgrounds, EzyFrame backgrounds and the StudioLink Chroma Key background system. This useful adjustable support can be used in three different ways: as a handle for the smaller Skylite panels, a support leg to support a Skylite, Panoramic, EzyFrame or StudioLink in the vertical position and to support a Skylite on the ground, creating a useful directional fill light.

Skylite Rapid Accessories	Code
Aluminium Frame Support Kit	LL LA8450



Specifications	
XpoBalance	
38cm (15")	LL LR1558

White Balance and Exposure

Getting accurate colours and exposure is made easier with the Manfrotto range of EzyBalance and XpoBalance products. Simply take a test shot of your subject holding the product each time you shoot in a new lighting situation. You can then use a custom white balance on your camera to take a reading off the Balance card for perfect white balance and exposure.

Alternatively, you can use the eyedropper tool in one of the many post-processing applications to set your correct white balance, then copy and paste to the rest of your batch of images.

With different grey options plus black and white patches, the XpoBalance allows you to set even more colour tint options for a range of creative results.

PATENTED EzyBalance

The EzyBalance 18% is a handy double sided 'pop up' grey/white card which simplifies the complex technical issues surrounding exposure and colour correction when working in different lighting conditions.

A unique focusing target enables the camera to focus on the card and take the necessary readings. A waterproof version is also available for scuba divers.



EzyBalance 18%

PATENTED XpoBalance

The XpoBalance works in a similar way to the EzyBalance but has the added advantage of three different grey surfaces on one side and a black, white and 18% grey surface on the other side, collectively offering a range of white balance, exposure, colour correction and bracketing adjustment options.



XpoBalance LL LR1558



Ezybox Hotshoe

The Ezybox Hotshoe converts your battery operated flash gun from a harsh directional light into a much softer diffused light and is available in three sizes - 38cm x 38cm (15" x 15"), 54cm x 54cm (21" x 21") and 76cm x 76cm (30" x 30"). The Ezybox hotshoe folds flat for easy storage and can be assembled in a matter of minutes. The inner and outer diffusers, which when used together, produces a two stop light loss. **The Ezybox Hotshoe Softbox is not designed for use with studio flash heads.**

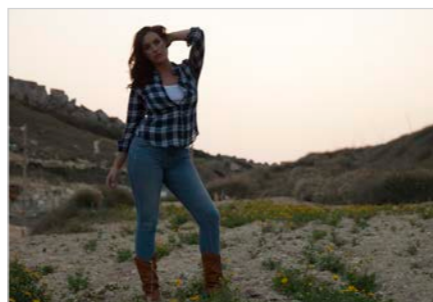


Removable inner + outer diffusers

Specifications						
Ezybox Hotshoe	A	B	C	D	E	Code
Ezybox Hotshoe Small*	46cm (18")	46cm (18")	38cm (15")	38cm (15")	35cm (14")	LL LS2438
Ezybox Hotshoe Medium*	63cm (25")	63cm (25")	54cm (21")	54cm (21")	45cm (17.5")	LL LS2462
Ezybox Hotshoe Large*	90cm (35.5")	90cm (35.5")	76cm (30")	76cm (30")	77cm (30")	LL LS2480

*Includes Ezybox Hotshoe Bracket

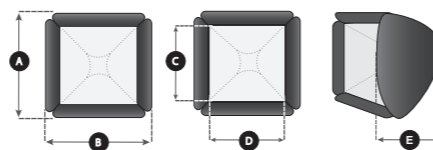
Features and Benefits
▶ Softbox for Hotshoe flash
▶ Adjustable bracket for different sized flash guns
▶ Operates as a coldshoe
▶ Folds flat
▶ Assembled in a few minutes
▶ Ideal for location use



Without Ezybox Hotshoe



With Ezybox Hotshoe



Ezybox Hotshoe Bracket LL LS2414



Ezybox Hotshoe Bracket fit to Ezybox Hotshoe Softbox

Features and Benefits
▶ Simple slide on elasticated fitting
▶ No permanent fixing system attached to your flash gun
▶ Folds flat for easy storage
▶ 1-stop light loss

Specifications		
Ezybox Micro	Size	Code
Ezybox Micro	W: 20cm x H: 14cm (8" X 5.5")	LL LS2211

* Not compatible with hammerhead style flashguns



Ezybox Hotshoe Accessories



Tiltthead Spigot LL LA2401

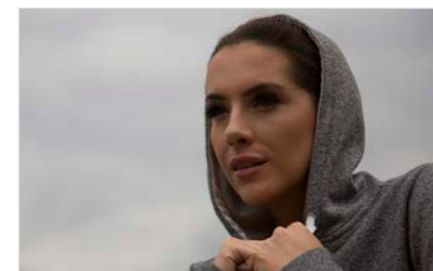


Fabric Grid for Ezybox Hotshoe Softboxes LL LS2462 LL LS2480

Specifications	
Ezybox Hotshoe Accessories	Code
Fabric Grid for LL LS2462 Ezybox Hotshoe Medium 54cm (21")	LL LS2962
Fabric Grid for LL LS2480 Ezybox Hotshoe Large 76cm (30")	LL LS2980
Ezybox Hotshoe Bracket (with standard flash mount)	LL LS2414
Tiltthead Spigot	LL LA2401

Ezybox Micro

A simple collapsible softbox which fits direct to your flashgun. The Ezybox Micro slides directly on to your gun and is secured in place thanks to an innovative internal frame structure and elasticated collar which requires no additional fixing mechanism to be permanently attached to your flash. Fits neatly in your camera bag - a great 'always with you' accessory.



Without Ezybox Micro



With Ezybox Micro

Ezybox Pro PATENT PENDING

Ezybox Pro is a range of unique fast fit softboxes which can be used with traditional studio flash, battery operated flashguns, the Elinchrom Ranger Quadra RX range and Profoto A1 and B2. The softboxes feature a unique softbox frame which fits directly to our Ezybox Pro Strip and Ezybox Pro Octa softboxes. Depending on your chosen light source, a choice of adapters can then be used to link the light source to the softbox frame. So, rather than buying different softboxes for every light you own the Ezybox Pro now offers a true 'one system fits all' solution.

- Features and Benefits**
- ▶ Multi light system bracket
 - ▶ Compatible with all Ezybox Pro softboxes
 - ▶ Also works with umbrellas when using flashguns
 - ▶ Speedlight Bracket ships with Tilthead Spigot (LL LA2401) and two way trigger cable



Ezybox Pro Speedlight bracket with softbox frame



With flashguns and receiver



With studio flash



With Elinchrom Quadra



With flashguns and umbrella



With Profoto A1



With Profoto B2

Ezybox Pro - Configuration

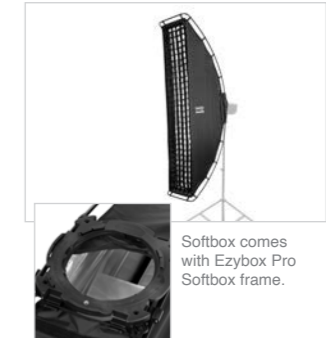
Step 1

Select softbox shape



Softbox comes with Ezybox Pro Softbox frame.

Ezybox Pro	Code
Octa - Medium	LL LS2720P
Octa - Large	LL LS2721P



Softbox comes with Ezybox Pro Softbox frame.

Ezybox Pro	Code
Strip 150cm x 30cm	LL LS3030

Step 2

Select your light source



For studio flash, you will require a compatible Ezybox Pro Speedring for your system.



For battery powered flashguns and portable flash (such as Elinchrom Quadra and Profoto A1 / B2) you will require the Ezybox Pro Portable Flash Bracket.

Step 3

Select the correct connector



Ezybox Pro Speedring	Code
Bron	LL LS2350N
Bowens	LL LS2351N
Elinchrom	LL LS2352N
Balcar	LL LS2353N
Profoto	LL LS2354N



Ezybox Pro Portable Flash Bracket**	Code
	LL LS2701

**Includes 2 way 3.5 jack, PC sync cable and tilthead spigot LL LS2401

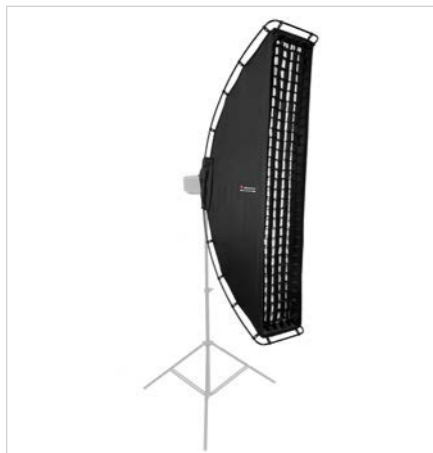


Ezybox Pro Strip PATENT PENDING

The Ezybox Pro is the world's first softbox designed to fit battery flash, portable flash and studio flash from all the major flash manufacturers. Designed to meet the demands of modern day photographers who shoot with different types of flash, the Ezybox Pro enables them to carry one softbox, which is compatible with all their flash units and simply switch between different flash using simple connectors, without adjusting the softbox itself.

The Ezybox Pro Strip features a unique patent pending design, boasting an ultra-fast assembly time. The Ezybox Pro Strip is built around an innovative collapsible RapidExoframe, which remains attached at all times to the unique Ezybox frame, the interface for the many different compatible flash units. The softbox fabric also remains attached to the RapidExoframe and simply slides along the structure once assembled and clips into position at both ends. The 25 cm x 150 cm softbox (gridded area) offers a 6:1 strip proportion, and includes an inner and outer diffuser which when used together offers a 2 stop light loss. The softbox can be used in the vertical and horizontal position. For added control and creativity, the Ezybox Pro Strip also comes with a fabric grid, which simply fits inside the recessed outer edge.

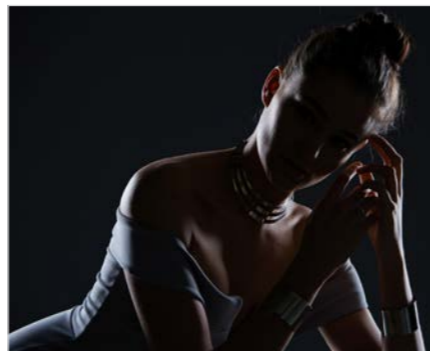
Rapid assembly, multiple flash unit compatibility and all the benefits of strip box style lighting.



Specifications								
Ezybox Pro Strip	A	B	C	D	E	F	G	Code
Ezybox Pro Strip	150cm (59")	25cm (10")	147cm (58")	25cm (10")	162.5cm (64")	34.5cm (14")	67cm (26")	LL LS3030

Dimensions of product when closed in bag: 42cm x 54cm x 11cm (17" x 21" x 4")

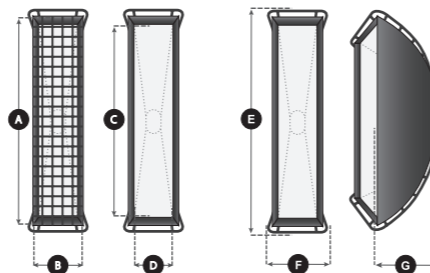
Features and Benefits
▶ Unique patent pending design
▶ Can be used with studio flash, battery operated flash guns, Elinchrom Quadra and Profoto A1/B2
▶ Rapid assembly time
▶ Includes grid



Shot without key light to show effect of Ezybox Pro Strip

Connections	Code
Ezybox Pro Speedlight Bracket*	LL LS2701
Elinchrom Quadra/Profoto Spigot	LL LS2705
Ezybox Pro Speedring Plate (Bron)	LL LS2350N
Ezybox Pro Speedring Plate (Bowens)	LL LS2351N
Ezybox Pro Speedring Plate (Elinchrom)	LL LS2352N
Ezybox Pro Speedring Plate (Balcar)	LL LS2353N
Ezybox Pro Speedring Plate (Profoto)	LL LS2354N

*Includes Umbrella Holder, Tilthead Spigot (LL LA2401) and two way trigger cable



Ezybox Pro - Octa

The Ezybox Pro is the world's first softbox designed to fit battery flash, portable flash and studio flash from all the major flash manufacturers. Designed to meet the demands of modern day photographers who shoot with different types of flash, the Ezybox Pro enables them to carry one softbox, which is compatible with all their flash units and simply switch between different flash using simple connectors, without adjusting the softbox itself.

The Ezybox Pro Octa softbox is our lightest Octa ever. Fast to assemble, the softbox simply pops open and is secured using four support rods and our unique Ezybox Pro softbox frame. The Ezybox Pro Octa is available in two sizes - medium and large (see below for measurements) and feature inner and outer diffusers which when used together, produces a 2 stop light loss and simply requires the correct connection kit depending on your chosen light source(s).

Save time and money with the Ezybox Pro Octa softbox.



Features and Benefits
▶ Unique world's first design
▶ Can be used with studio flash, battery operated flashguns, Elinchrom Quadra and Profoto A1 and B2
▶ Extremely lightweight and sturdy
▶ Optional grids available
▶ Octagonal catchlights in the eyes



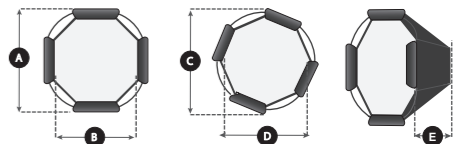
Frame included with softbox



Fabric Grids	Code
Fabric grids for Ezybox Pro Octa- Medium	LL LS2953
Fabric grids for Ezybox Pro Octa- Large	LL LS2954

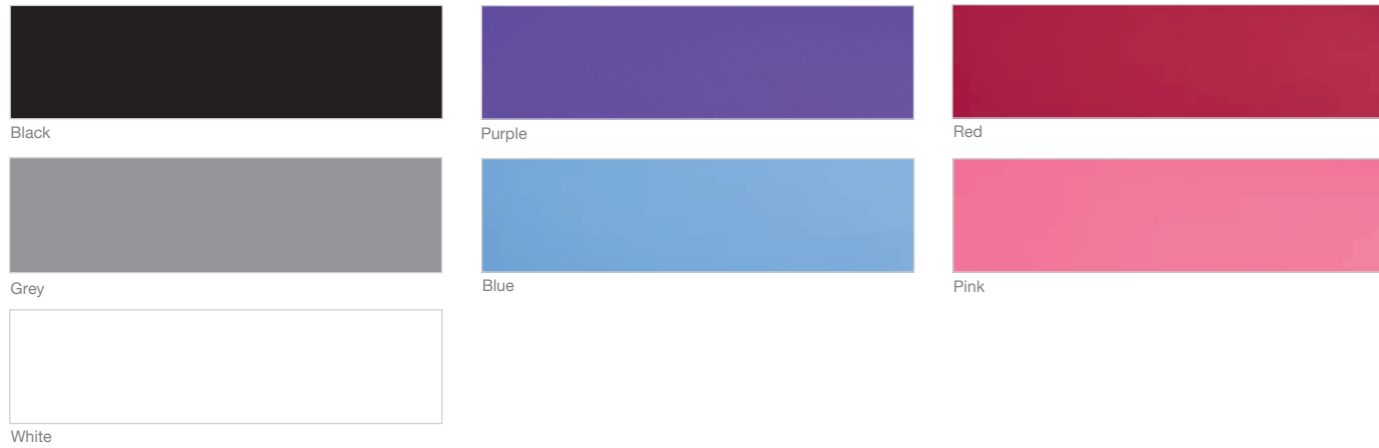
Connections	Code
Ezybox Pro Speedlight Bracket*	LL LS2701
Elinchrom Quadra/Profoto Spigot	LL LS2705
Ezybox Pro Speedring Plate (Bron)	LL LS2350N
Ezybox Pro Speedring Plate (Bowens)	LL LS2351N
Ezybox Pro Speedring Plate (Elinchrom)	LL LS2352N
Ezybox Pro Speedring Plate (Balcar)	LL LS2353N
Ezybox Pro Speedring Plate (Profoto)	LL LS2354N

*Includes Umbrella Holder, Tilthead Spigot (LL LA2401) and two way trigger cable



Specifications						
Ezybox Pro Octa	A	B	C	D	E	Code
Ezybox Pro - Octa Medium	97cm (38")	80cm (31.5")	99cm (39")	88cm (35")	52cm (20.5")	LL LS2720P
Ezybox Pro - Octa Large	117cm (46")	102cm (40")	120cm (47")	112cm (44")	66cm (26")	LL LS2721P

Plain Background Swatches



Plain Collapsible Backgrounds

A range of collapsible, reversible, plain coloured backgrounds. In addition to the standard black, white and grey we now have a range of punchy vibrant colours for a more modern look to your portraits.

A simple solution for flat plain coloured backgrounds, a great way to get the seamless paper effect but in a collapsible portable format!



Features and Benefits

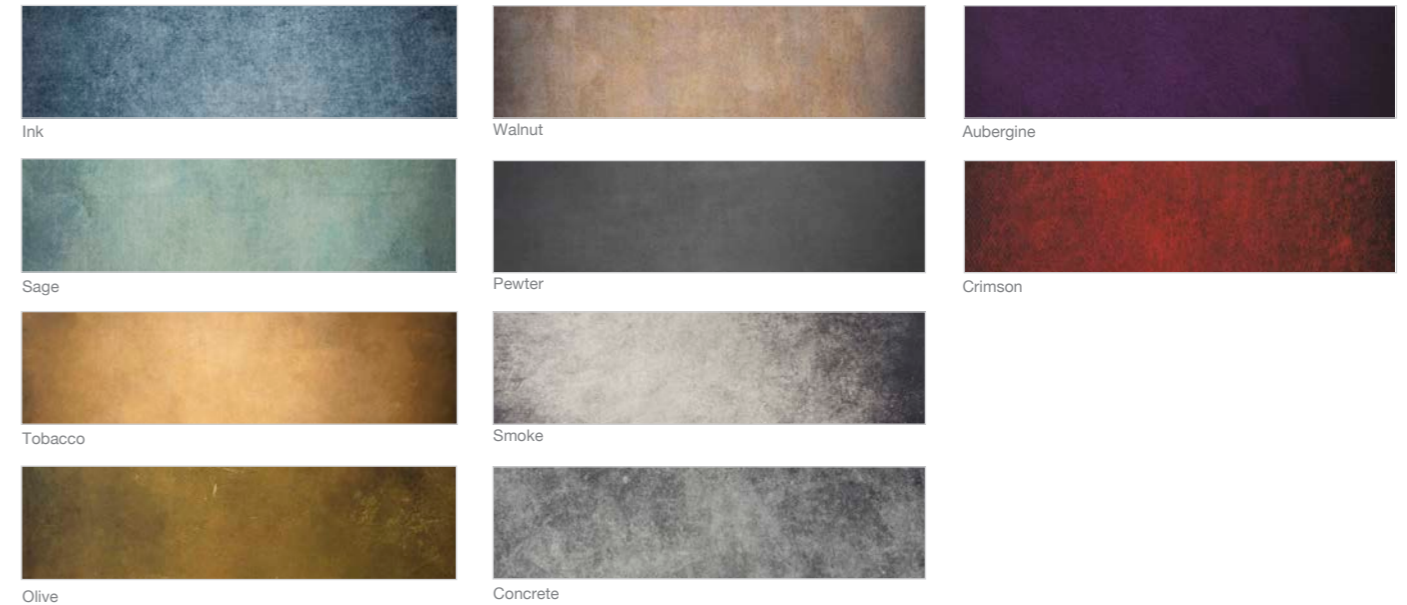
- ▶ Crease resistant
- ▶ Single colours
- ▶ Reversible
- ▶ Collapsible
- ▶ Ideal for passport, ID and corporate photos



Specifications

Plain Collapsible Backgrounds	Size	Code
Blue / Pink	1.8m x 2.15m (6' x 7')	LL LB6751
Red / Purple	1.8m x 2.15m (6' x 7')	LL LB6752
Black / White	1.5m x 1.8m (5' x 6')	LL LC5621
Black / White	1.8m x 2.15m (6' x 7')	LL LB5921
Black / White	1.8m x 2.75m (6' x 9')	LL LB6921
Black / White with train	1.8m x 2.15m (6' x 7')	LL LB6701
Black / Mid Grey	1.5m x 1.8m (5' x 6')	LL LB56GB
Black / Mid Grey	1.8m x 2.15m (6' x 7')	LL LB67GB
White / Mid Grey	1.5m x 1.8m (5' x 6')	LL LB56GW
White / Mid Grey	1.8m x 2.15m (6' x 7')	LL LB67GW

Vintage Collapsible Background Swatches



Features and Benefits

- ▶ Timeless hand painted look
- ▶ Subtle textured surface
- ▶ Reversible
- ▶ 6 different colour tones
- ▶ Collapses to a third of its original size

Specifications

Vintage Collapsible Backgrounds	1.5 x 2.1m (5' x 7')
Tobacco/Olive	LL LB5705
Ink/Sage	LL LB5720
Walnut/Pewter	LL LB5721
Aubergine/Crimson	LL LB5722
Smoke/Concrete	LL LB5745
Joe McNally Ironworks	LL LB5750JM

Some camera sensors may interpret the colours used on our printed backgrounds differently.

Vintage Collapsible Backgrounds

The vintage collapsible backgrounds offer a range of versatile subtly textured surfaces, great for portraits, fashion and product photography. These 1.5 x 2.1m (5' x 7') reversible backgrounds provide a very fashionable, timeless hand painted look that subtly complements the chosen subject. Two great backgrounds in one with a collapsible pop up construction that provides today's image-makers with a truly portable solution that can easily be transported.



Concrete LL LB5745



Aubergine LL LB5722

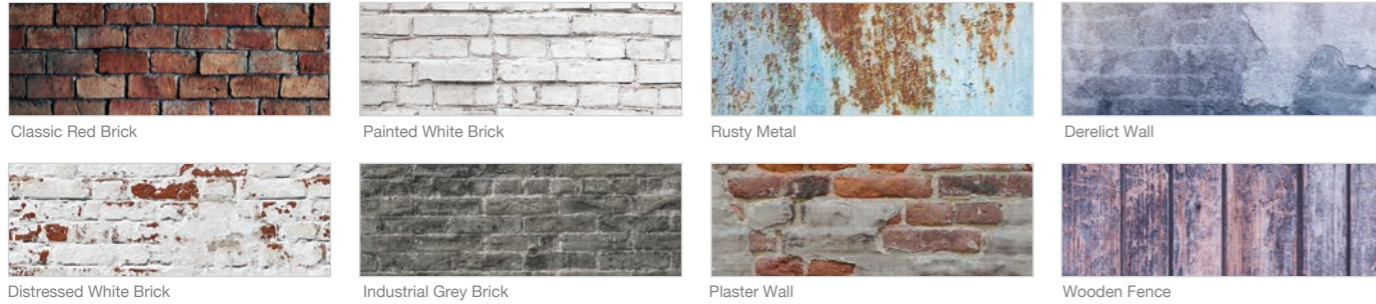


Tobacco LL LB5705



Ink LL LB5720

Urban Collapsible Backgrounds Swatches



Urban Collapsible Backgrounds

The urban collapsible backgrounds allow you to create the outdoor look in an instant whether you're in the studio or a client's home. Each double sided background has unique urban feel and can quickly add a new dimension to your portrait sittings. No longer will you have to find locations or be controlled by the weather.

- Features and Benefits**
- ▶ 4 different surfaces
 - ▶ Reversible
 - ▶ Create the location effect anywhere
 - ▶ Collapsible to a third of its original size



Painted White Brick LL LB5707

Specifications		
Urban Collapsible Backgrounds	Size	Code
Classic Red Brick / Distressed White Brick	1.5 x 2.1m	LL LB5706
Painted White Brick / Industrial Grey Brick	1.5 x 2.1m	LL LB5707
Rusty Metal / Plaster Wall	1.5 x 2.1m	LL LB5713
Derelict Wall / Wooden Fence	1.5 x 2.1m	LL LB5715

Some camera sensors may interpret the colours used on our printed backgrounds differently.



Distressed White Brick LL LB5706

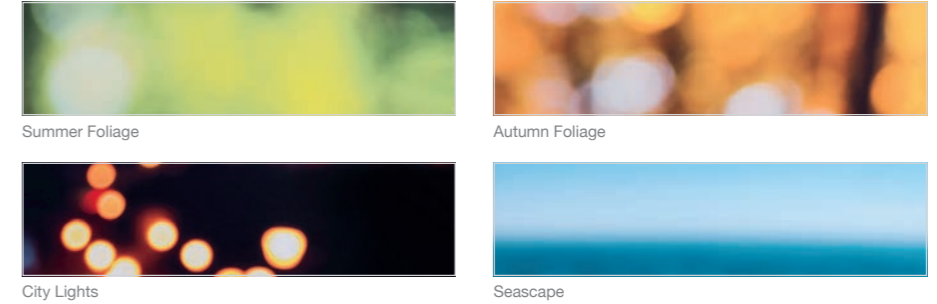


Classic Red Brick LL LB5706



Industrial Grey Brick LL LB5707

Out of Focus Background Swatches



Out of Focus Backgrounds

Want to create images with beautiful 'bokeh' and shoot at f8? With the Manfrotto 'Out of Focus' backgrounds you can create that wonderful 'drop-focus' look whilst still shooting at the sharpest of apertures. Ideal for professionals or amateurs alike, these double sided 1.2m x 1.5m (4' x 5') collapsible backgrounds feature 'out of focus' scenes of a variety of locations. With Summer Foliage/City Lights or Autumn Foliage/Seascape to choose from there's a scene for any occasion. The backgrounds are easily transportable, folding to a third of their original size and are perfect for up to half length portraits.

- Features and Benefits**
- ▶ Four different reversible surfaces
 - ▶ 'Drop focus' look
 - ▶ Create the location effect anywhere
 - ▶ Collapsible to a third of its original size

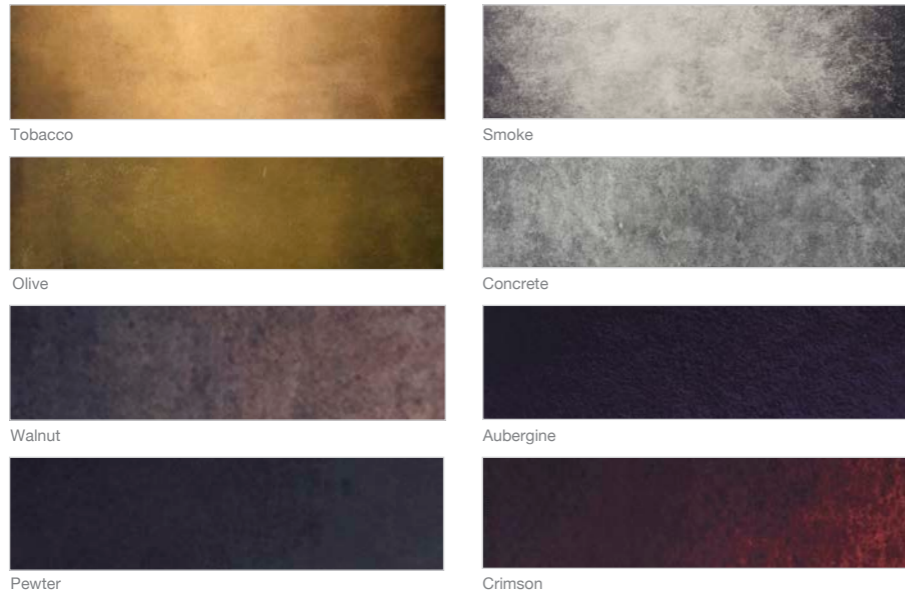


Specifications

Out of Focus Backgrounds	Size	Code
Summer Foliage / City Lights	1.2m x 1.5m (4' x 5')	LL LB5730
Autumn Foliage / Seascape	1.2m x 1.5m (4' x 5')	LL LB5731

Some camera sensors may interpret the colours used on our printed backgrounds differently.

EzyFrame Vintage Swatches



EzyFrame Vintage

The EzyFrame Vintage Background 2 x 2.3m (6'7" x 7'5") is a large format collapsible background concept offering a much larger shooting area for our highly successful vintage textured background surfaces, currently available as 1.5 x 2.1m (5' x 7') collapsible 'pop-up' style backgrounds. The extra width and height combined with the squarer format offers a substantially increased surface area allowing the photographer to pose multiple subjects and the use of props. Ideal for family portraits, more animated action poses, fashion and commercial shoots.

The EzyFrame Vintage Background features the tried and tested aluminium frame and clip on cover design used on our highly successful Skylite panels, Panoramic backgrounds and the newly launched StudioLink Chroma Key solutions. Assembled in a matter of minutes the EzyFrame Vintage background and cover packs down into a small rigid carry case measuring only 103cm x 19cm x 14cm making it extremely portable.

Features and Benefits

- ▶ Aluminium frame
- ▶ Highly portable and offers large background coverage
- ▶ EzyFrame covers clip easily onto the frame for an impressively taut finish
- ▶ Interchangeable with other EzyFrame covers



Specifications	
EzyFrame Backgrounds	
Tobacco	LL LB7926
Olive	LL LB7924
Smoke	LL LB7928
Concrete	LL LB7930
Ink	LL LB7922
Sage	LL LB7932
Walnut	LL LB7934
Pewter	LL LB7936
Aubergine	LL LB7938
Crimson	LL LB7940
EzyFrame Cover	
Tobacco Cover	LL LB7927
Olive Cover	LL LB7925
Smoke Cover	LL LB7929
Concrete Cover	LL LB7931
Ink Cover	LL LB7923
Sage Cover	LL LB7933
Walnut Cover	LL LB7935
Pewter Cover	LL LB7937
Aubergine Cover	LL LB7939
Crimson Cover	LL LB7941



EzyFrame Accessories	Code
Aluminium Frame Support Kit	LL LA8450
Skylite Rapid Griphead	LL LA8446
Rigid Case 78cm x 19cm x 14cm	LL LRCASE775
Rigid Case 103cm x 19cm x 14cm	LL LRCASE1025



Skylite's special griphead allows it to be fixed to stands and tilted as required. LL LA8446



Aluminium Frame Support Kit LL LA8450

PATENTED HiLite Backgrounds

The HiLite backgrounds range allows the photographer to work in a way that was extremely difficult to achieve in the past, 'high key' photography on location and in restrictive spaces. By rear lighting the white background itself there is no longer a need to use a background light behind the subject. Furthermore, because the background is actually illuminated it means the subject can stand virtually right in front of it without casting a shadow. The HiLite backgrounds also works as a large rear softbox and illuminates the subject as well, meaning you can use just one other flash head to light the subject from the front. What's more, the whole thing is collapsible.

- Features and Benefits**
- ▶ Available in four sizes 1m x 1.4m (3'6" x 4'6"), 1.5m x 2.15m (5' x 7'), 1.8m x 2.15m (6' x 7') and 2.15m x 2.5m (7' x 8')
 - ▶ Can be rotated and used on its short or long edge
 - ▶ An optional 'wipe clean' vinyl train is also available that attaches to either edge for full length work
 - ▶ Can be suspended on our LL LA1108 background support system
 - ▶ Can even be used as a very large softbox
 - ▶ Free standing



Specifications

HiLite Background	Code
HiLite 1m x 1.4m (3'6" x 4'6")	LL LB8990
HiLite 1.5m x 2.15m (5' x 7')	LL LB8857
HiLite 1.8m x 2.15m (6' x 7')	LL LB8867
HiLite 2.15m x 2.5m (7' x 8')	LL LB8878
Cleanable Vinyl Train	Code
For the 1.5m x 2.15m (5' x 7') HiLite	LL LB8858
For the 1.8m x 2.15m (6' x 7') HiLite	LL LB8868
For the 2.15m x 2.5m (7' x 8') HiLite	LL LB8879

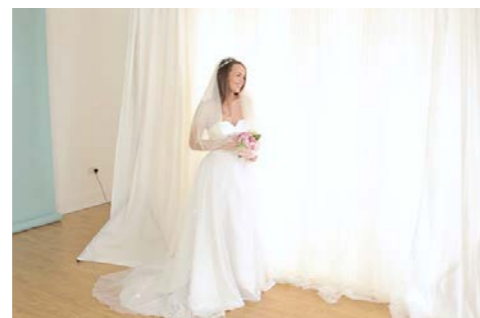


“The HiLite is probably the best investment you will ever make as a photographer who uses flash. Why? There is not any other flash based product on the market that has so many uses to create so many styles and in any location. From a background to a window light, the HiLite allows you to shoot big light anywhere, producing a window light quality or a portable pure white background.”

Mark Cleghorn, Photographer & Director of The Photographer Academy.



Getting creative with the HiLite by putting the model inside, there's so much you can do with a HiLite.



The HiLite is not only a background. It can be used as a huge full length softbox.



The HiLite is so simple to set up. Just attach a short rod to each corner and it's ready to shoot.

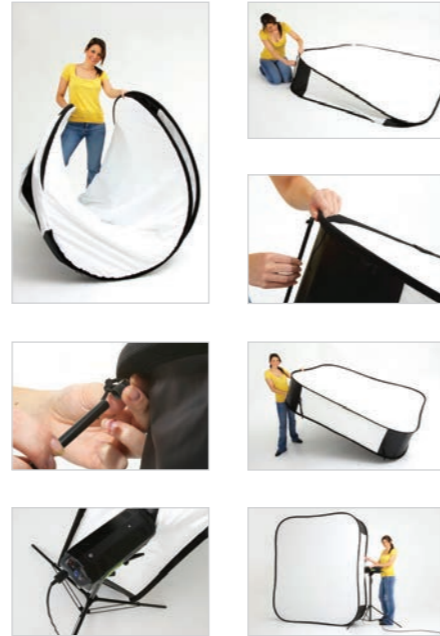
HiLite Accessories



LL LB8878



LL LB8990



Features and Benefits	
▶	Designed for using the HiLite as a softbox
▶	Compatible with the 1.8m x 2.15m (6' x 7') version only
▶	3 different accessories
▶	Unlimited creative potential

Specifications	
HiLite Accessories	Code
HiLite Window Voile	LL LB8969
HiLite Shaper	LL LB8968
HiLite Shapers and Masks	LL LB8967

Originally launched as an illuminated high key background the HiLite can also be used as an incredibly large full-length softbox, offering beautiful soft light. To offer ultimate control and creativity as a softbox we offer three accessories:

- HiLite Window Voile - turns the HiLite into a huge head to toe window light, allowing photographers to create the illusion that the subject is looking out through a large window or doorway.
- HiLite Shaper – a 86cm wide opaque black panel that masks the light allowing the photographer to create a single strip of light or split the light into two strips. Each offers a different lighting effect allowing the photographer to be as creative as they wish.
- HiLite Shapers and Masks - The shapers work as above however in this set there are three of them which allows the photographer maximum control. This set also includes three masks, which attaches to the top and the sides of the HiLite to ensure no light is spilled giving the photographer complete control.

All accessories are compatible with the 1.8m x 2.15m (6' x 7') HiLite only.



LL LB8969



HiLite Bottletop Swatches



Super Black



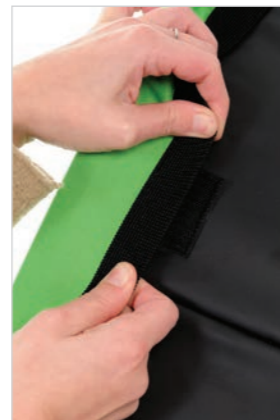
Grey



Chroma Key Green

HiLite Bottletops

The bottletop background covers with a train now make the HiLite product range even more versatile. These backgrounds stretch over the HiLite and allow the photographer to quickly switch from a high key to a low or mid key environment. When using the covers the HiLite should not be illuminated from the rear.



Features and Benefits	
▶	Switch from high key to mid or low key in an instant
▶	Designed to fit the 1.8m x 2.15m (6' x 7') HiLite
▶	Available in three colours

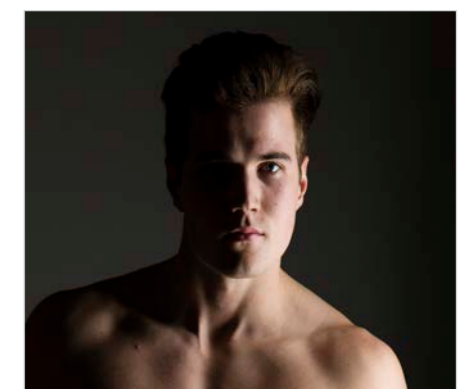
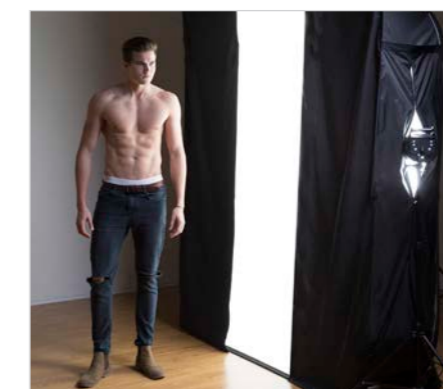
Specifications	
HiLite Bottletops	Code
Super Black 1.8m x 2.15m (6' x 7')	LL LB8803
Grey 1.8m x 2.15m (6' x 7')	LL LB8870
Chroma Key Green 1.8m x 2.15m (6' x 7')	LL LB8881



LL LB8968



LL LB8967



Panoramic Background Swatches



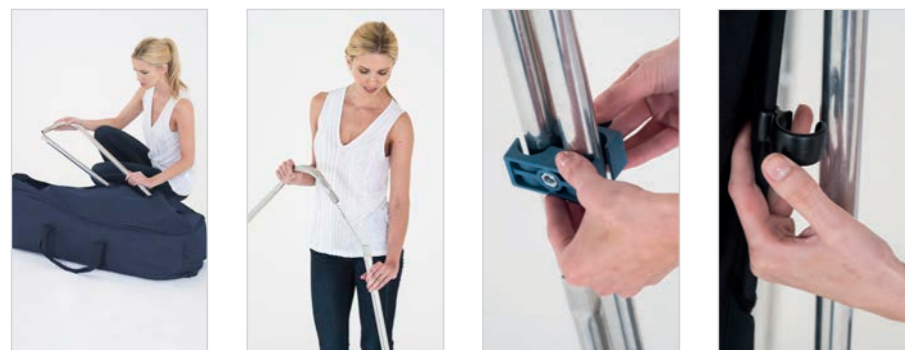
Panoramic Background

The Panoramic background is one of our widest, crease free textile surfaces. It features a collapsible three panel aluminium framework, creating a useful self-supporting wraparound structure. The fabric cover clips to the framework and is available in three solid colours – Black, Chroma Key Green and White and two textured surfaces – Granite and Limestone.

The Panoramic background is ideal for shooting larger groups on location, perfect for weddings, prom nights and event photography. The background folds down neatly into its own case and fits easily into a car.

Features and Benefits

- ▶ Up to 4m (13') wide and 2.3m (7'5") high
- ▶ Self-supporting
- ▶ Weighs only 9kg (19.8lb)
- ▶ Packs into a 100cm x 30cm x 35cm (39" x 12" x 13.5") bag



Specifications	
Panoramic Background	Code
Panoramic Background - Black	LL LB7621
Panoramic Background - White	LL LB7623
Panoramic Background - Granite	LL LB7901
Panoramic Background - Limestone	LL LB7902
Panoramic Background Cover - Black	LL LB7625
Panoramic Background Cover - White	LL LB7627
Panoramic Background Cover - Granite	LL LB7903
Panoramic Background Cover - Limestone	LL LB7904



Aluminium Frame Support Kit LA8450



Panoramic Background Chroma Key

The Panoramic is a collapsible 4m (13') wide, 2.3m (7'5") high background that folds down neatly into its own carry case and fits easily into a car. Weighing only 9kg (19.8lb) it's ideal for busy image-makers on the move. The background is completely self-supporting and can be set up in minutes. The structure comprises three individual aluminium framed sections, connected together with a hinge clip to allow the background to be set up flat to lean against a wall or with the side frames folded in to create a wraparound effect. The Chroma Key cover just simply clips to the aluminium frame and creates a taught, seamless surface.

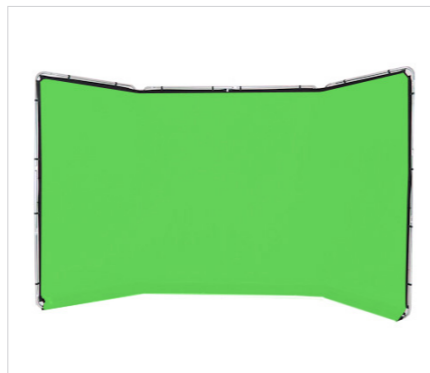
The background is ideal for live stream and post-production keying projects. Its impressive 4m width creates enough working area for multiple camera angles and subjects. Although the brushed fabric is incredibly non-reflective, the height and width combined is enough to place the subject/s at a good working distance from the background eliminating risk of any colour spill from the Chroma Key surface.

Features and Benefits

- ▶ Ideal for live stream and post-production keying
- ▶ Enough working area for multiple camera angles and subjects
- ▶ Self Supporting
- ▶ Quick to assemble
- ▶ Collapses down into a fabric bag
- ▶ Available in Chroma Key Green & Chroma Key Blue

Specifications

Panoramic Background	Code
Background - Chroma Key Green	LL LB7622
Background - Chroma Key Blue	LL LB7943
Background Cover - Chroma Key Green	LL LB7626
Background Cover - Chroma Key Blue	LL LB7963



Panoramic Background Connection Kit

Features and Benefits

- ▶ Allows multiple screens to be joined side-by-side
- ▶ 6 inch skirt on bottom edge provides continuation of screen
- ▶ Available in chroma key green and blue
- ▶ Easy to set up

Specifications

Panoramic Background Connection Kit	2.3m (7.5')
Chroma Key Green	LL LB7945
Chroma Key Blue	LL LB7944

Accessories

- Vinyl Floor Strip 1.37m x 4m Chroma Key Green
- Vinyl Background / Floor 2.75m x 6m Chroma Key Green
- Gaffer Tape 50mm x 50m Chroma Key Green

The highly successful Panoramic Background continues to evolve with users constantly finding new ways to use this highly versatile product. A popular configuration for the Panoramic Chroma Key background is to join two or sometimes three panels together to make a much wider background to meet the needs of their chroma key film or live stream production.

To enable users to easily join multiple Panoramic Backgrounds together side by side and provide a continuation of the chroma key surface from one panel to the next, the new Panoramic Background Connection Kit includes two hinge brackets to join the aluminium frames plus a clip on chroma key joining strip to conceal the aluminium frames and the hinge brackets. The connection kit takes only a few minutes to assemble and packs down neatly to fit inside the existing Panoramic backgrounds rigid carry case.



StudioLink Swatches



Chroma Key Green



Chroma Key Blue

StudioLink

The StudioLink Background is a unique modular chroma key background system for use in the studio or out on location. Once assembled, multiple 3 x 3m (10' x 10') StudioLink screens can be joined together using the StudioLink Chroma Key Connection Kit (available separately) to form various configurations; side by side in a straight line or as a curvature up to the point of creating a full 360 degree enclosure. In addition, screens singularly or side-by-side can be rigged (using standard grip equipment) one above the other to create a second tier of screens.



Features and Benefits

- ▶ Reversible
- ▶ Chroma Key rim tape as standard
- ▶ Crease resistant fabric
- ▶ Fast to set up and dismantle
- ▶ For inside and outside use
- ▶ Collapses to a third of its original size

Specifications

StudioLink	3m (10')
Chroma Key Green Screen Kit	LL LR83350
Chroma Key Blue Screen Kit	LL LR83352
StudioLink Covers	3m (10')
Chroma Key Green Cover	LL LR83351
Chroma Key Blue Cover	LL LR83353



Gaffer Tape 50mm x 50m LL LB7966



Aluminium Frame Support Kit LA8450

StudioLink Connection kit



Specifications

StudioLink Connection Kits	3m (10')
Chroma Key Green Connection Kit	LL LR83354
Chroma Key Blue Connection Kit	LL LR83355

StudioLink Accessories

Specifications

StudioLink Accessories	
Vinyl Floor 1.37x4m Chroma Key Green	LL LB7965
Vinyl Background 2.75x6m Chroma Key Green	LL LB7781
Gaffer Tape 50mm x 50m Chroma Key Green	LL LB7966
Aluminium Frame Support Kit	LL LA8450
Skylite Rapid Griphead	LL LA8446
Sand Bag	LL LB1592



Skylite's special griphead allows it to be fixed to stands and tilted as required. LL LA8446



Sand Bag LL LB1592

Vinyl Floor Strip 1.37m x 4m Chroma Key Green

The Vinyl Floor Strip 1.37m x 4m Chroma Key Green is a modular floor created to pair perfectly with Manfrotto's leading chroma key green background solutions such as the Panoramic, Chroma Key FX and Studio Link.

These compact rolls are easy to transport due to their manageable length and can be used individually, in a 2x2 formation, 1x3 formation or however large or small required.

The modular floor strips offer the professional content creator the ultimate flexibility; one day they may need only one panoramic background with a single floor strip, the next they may need two panoramic backgrounds joined together and a large floor area to work with in a wraparound studio set up.

Features and Benefits

- ▶ Pair perfectly with Manfrotto's Chroma Key Background range
- ▶ Modular strips can be used individually or joined together
- ▶ Hard-wearing, easy to clean and reusable
- ▶ Matte finish – to prevent unwanted reflections
- ▶ Crease resistant
- ▶ Strong aluminium inner-core tube on background/floor

Specifications

Chroma Key Vinyl Backgrounds and Floors	Code
Vinyl Floor 1.37x4m Chroma Key Green	LL LB7965
Vinyl Background 2.75mx6m Chroma Key Green	LL LB7781



Vinyl Background / Floor 2.75m x 6m Chroma Key Green



The Vinyl Background / Floor 2.75m x 6m Chroma Key Green can be used as either a full-length background using a support system thanks to the included aluminium core or can be used as a floor solution.

Created to pair perfectly with Manfrotto's leading chroma key green background solutions such as the Panoramic, Chroma Key FX and Studio Link by using the industry standard chroma key green reference.



Gaffer Tape 50mm x 50m Chroma Key Green

Features and Benefits

- ▶ Ideal for securing background solutions to the floor
- ▶ Ultra-Strong hold
- ▶ Leaves no sticky residue

Specifications

Chroma Key Gaffer Tape	Code
Gaffer Tape 50mm x 50m Chroma Key Green	LL LB7966

Manfrotto's Gaffer Tape 50mm x 50m Chroma Key Green is ideal for securing background solutions to the floor and to cover joins for seamless keying when using Manfrotto's vinyl floor solutions.

It pairs perfectly with our existing Manfrotto chroma key range using the industry standard chroma key green reference as well as being premium quality tape that leaves no sticky residue when removed at the end of a shoot.



Chroma Key Collapsible Swatches



Chroma Key Green

Chroma Key Blue

Chroma Key Collapsible Reversibles

Chroma Key has been used in film and cinema production as a tool to mix two or more images together in all aspects of the art. It is increasingly used in digital photography to cut and paste a subject onto a background.

Features and Benefits

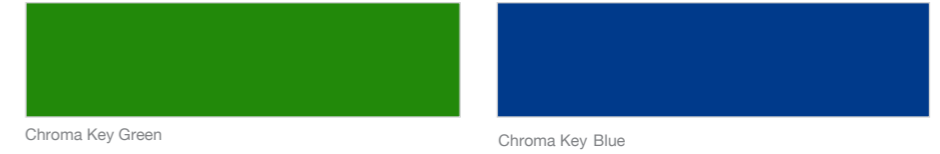
- ▶ Reversible
- ▶ Chroma Key rim tape as standard
- ▶ Crease resistant fabric
- ▶ Fast to set up and dismantle
- ▶ For inside and outside use
- ▶ Collapses to a third of its original size



Specifications

Chroma Key Collapsible Background	Size	Code
Chroma Key Blue/ Green Reversible	1.5m x 1.8m (5' x 6')	LL LC5687
	1.8m x 2.1m (6' x 7')	LL LC5987
Chroma Key Green	1.8m x 2.1m (6' x 7')	LL LC5981
	1.8m x 2.75m (6' x 9')	LL LC6981

Chroma Key Curtain Swatches



Chroma Key Green

Chroma Key Blue

Chroma Key Curtain

The Manfrotto Chroma Key Curtains are available in two sizes, 3m x 3.5m (10' x 12") and 3m x 7m (10' x 24"). Choose from Green or reversible Blue / Green versions. For most effective use, mount with Manfrotto's background support system (see page 65-66).

Features and Benefits

- ▶ Available in green and reversible blue/green
- ▶ Machine washable 40 degrees celcius
- ▶ Stretches to remove creases
- ▶ Available in two sizes

Specifications

Chroma Key Curtains	3m x 3.5m (10' x 12')	3m x 7m (10' x 24')
Green	LL LC5781	
Reversible Blue/Green	LL LC5787	
Green		LL LC5881
Reversible Blue/Green		LL LC5887



Superwhite Vinyl Background

Manfrotto's 'wipe clean' vinyl backgrounds can literally be used over and over again. Simply wipe away any dirt or footprints at the end of your shoot, then roll it back up ready for next time! It couldn't be easier. The vinyl can easily be suspended using our LL LB1128 background support system, while the 3.5m (White only) can be suspended using the 4m Solo Background Support (LL LB1142).

Note: Not compatible with the Manfrotto Expan Drive System

Features and Benefits

- ▶ Wipe clean
- ▶ Long lasting
- ▶ Ideal for 'high key' photography
- ▶ 2.75m* x 6m (9' x 20') and 3.5m x 6m (11'5" x 20')

Specifications

Superwhite Vinyl Background	Code
Superwhite Vinyl Background 2.75m* x 6m	LL LB7761
Superwhite Vinyl Background 3.5m x 6m	LL LB7763
Black Vinyl Background 2.75m* x 6m	LL LB7765

*2.75m wide vinyl is rolled onto an aluminium core 2.78m wide (+/-1cm tolerance)



Paper Roll Backgrounds

Features and Benefits

- ▶ Support systems available
- ▶ Available in 3 sizes
- ▶ Comprehensive range of colours
- ▶ Totally crease free
- ▶ Disposable if marked
- ▶ Cut your own custom lengths

Specifications

Paper Roll Backgrounds size: 2.72m x 11m (107"x36')	Code
Super White	LL LP9001
Heaven	LL LP9002
Corn	LL LP9004
Navy	LL LP9005
Wine	LL LP9006
Red	LL LP9008
Arctic Grey	LL LP9012
Conker	LL LP9016
Black	LL LP9020
Marigold	LL LP9024
Sandstone	LL LP9025
Flint	LL LP9026
Shadow Grey	LL LP9027
Amethyst	LL LP9029
Ocean	LL LP9030
Kingfisher	LL LP9031
Gala Pink	LL LP9037
Primrose	LL LP9038
Leaf Green	LL LP9046
Aztec	LL LP9047
White	LL LP9050
Ivory	LL LP9051
Royal	LL LP9058
Pewter	LL LP9060
Purple	LL LP9062
Regal Blue	LL LP9065
Yellow	LL LP9071
Chroma Key Green	LL LP9073
Size: 1.35m x 11m (53" x 36')	Code
Super White	LL LP9101
Black	LL LP9120
Shadow Grey	LL LP9127
Size: 3.55m x 30m (140" x 98')	Code
Super White	LL LP9201
Black	LL LP9220



Magnetic Background Support

PATENT PENDING

The Manfrotto Magnetic Background Support makes attaching and removing backgrounds simple. The steel band located within the rim of The Manfrotto backgrounds attaches directly to the two magnetic housings on the crossbar. The support can be raised to its desired position and the background simply lifted into position. The Magnetic Background Support will fit to most lighting stands with a 5/8" spigot. A kit is also available which includes a LL LS1159 lighting stand and carry case.

Features and Benefits	
▶	Magnetic connectors
▶	Universal fitting
▶	Available as a kit*
▶	Holds up to 5kg (11lb)

Specifications	
Magnetic Background Support	Code
Magnetic Background Support	LL LB1120
Magnetic Background Support Kit*	LL LB1121

*Kit includes Magnetic Background support, LL LS1159 light stand and carry case



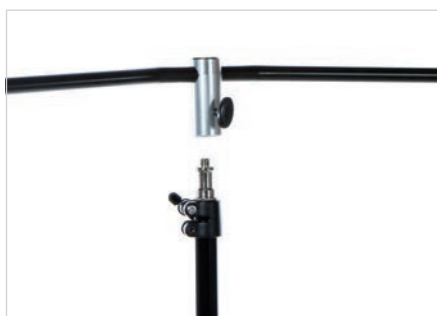
Magnetic Background Support LL LB1120



Magnetic Background Support Kit LL LB1121



Magnetic connectors



Fits to most lighting stands



Fit to Out of Focus Background

Solo Background Support

The Solo background support features a unique pivoting cross bar which makes raising the background on the supports a much easier and safer operation. Rather than step by step adjustments at each end of the support system the new pivoting connectors allow for much greater steps without making the whole structure unstable and unmanageable. The support is available as a 3m wide or 4m wide solution. The 4m version can also be extended to 6m to accommodate wider textile backgrounds and features our heavy duty stands which allow the use of our wide width vinyl (page 63). Each kit comes in a handy carry case which fits easily into a car.

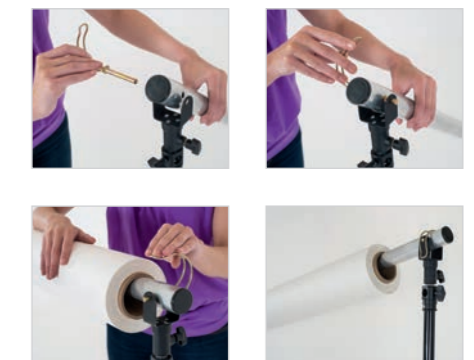
Features and Benefits	
▶	Single user operation
▶	Unique pivoting cross bar
▶	3m, 4m and 6m widths, up to 2.8m high

Specifications	
Solo Background Support	
Solo Background Support 3m (10')	Code
Solo Background Support 3m (10')	LL LB1105
Solo Background Support 4m (13') Heavy Duty	LL LB1142
Solo Background Support Extension* 2m (6.5')	LL LB1143

*For 4m Background Support only



Solo Support Brackets



Background Supports

There are a number of background supports systems to accommodate curtain, collapsible and roll up backgrounds.



LL LA1108



LL LB1128

Specifications	
Background supports	Code
Support for 3m (10') wide curtain and roll up backgrounds (metal collars)	LL LA1108
Heavy duty support for paper and vinyl roll up backgrounds (metal collars)	LL LB1128
Telescopic crossbar	LL LB1119
Aluminium Frame Support Kit	LA8450



LL LA1108



LL LB1119



LA845

Specifications	
Tiltheads	Code
Tilthead Shoe Lock	LL LA2422
Tilthead with spigot	LL LA2401

*Includes Waist Holder



Tilthead with Spigot LL LA2401



Tilthead Shoe Lock LL LA2422

Brackets

Stands

There are a number of different lighting and support stands available.



4 Section Heavy Duty LL LS1160 (left)
4 Section Standard LL LS1158 (right)



4 Section Air Cushioned LL LS1159



Sand Bag LL LB1592



Metal Collar



Specifications	
Stands	Code
4 section standard lighting stand with plastic collars - Collapsible height: 84cm (33") Minimum height: 99cm (39") Maximum height: 310cm (122") Spread: 120cm (47") Loading capacity: 2.5kg (5.5lb) Net Weight: 1.25kg (2.8lb) Maximum loading capacity, when each section is shortened by 2.54cm (1"): 4kg (8.8lb)	LL LS1158
4 section air cushioned lighting stand with metal collars - Collapsible height: 84cm (33") Minimum height: 99cm (39") Maximum height: 298cm (117") Spread: 120cm (47") Loading capacity: 3kg (6.6lb) Net Weight: 1.33kg (2.9lb) Maximum loading capacity, when each section is shortened by 2.54cm (1"): 5kg (11lb)	LL LS1159
4 section heavy duty air cushioned lighting stand with metal collars Collapsible height: 106cm (42") Minimum height: 124cm (49") Maximum height: 360cm (142") Spread: 110cm (43") Loading capacity: 8kg (17.6lb) Net weight: 2.1kg (4.6lb) Maximum loading capacity, when each section is shortened by 2.54cm (1"): 12kg (26.4lb)	LL LS1160
Sand Bag	LL LB1592

Posing Tubs

- Features and Benefits**
- ▶ Variety of sizes
 - ▶ Nestable 'Russian Doll' style for easy storage
 - ▶ Hard wearing nylon covers with padded seats
 - ▶ Includes a carry case with shoulder strap
 - ▶ White covers are a simple slide on 'sock' design

Specifications

Posing Tubs	Code
Posing Tubs	LL LA8014
White Posing Tub Covers	LL LA8015



- Features and Benefits**
- ▶ Multi position
 - ▶ Waterproof covering
 - ▶ Supports babies of all ages

Specifications

Baby Poser	Code
Baby Poser	LL LA8017



Baby Poser

The baby poser is a range of bead filled cushions designed to support a baby securely during the shoot. The cushions can be configured in different ways to pose babies of all ages comfortably on their back or front, kneeling or standing. When the cushions are positioned how you want them, fabric can be placed over the cushions to create the background colour of your choice. Each cushion is covered with a waterproof fabric in case of any little accidents!



Art. No	Description	Page
LL LA1100	Universal Bracket 50cm - 120cm (20" - 48")	16
LL LA1107	Panelite Bracket 95cm - 180cm (38" - 72")	16
LL LA1108	Support for 3m (10') wide curtain and roll up backgrounds (metal collars)	54
LL LA2401	Tilthead with spigot	25, 55
LL LA2422	Tilthead Shoe Lock	55
LL LA2430	TriGrip Bracket	13
LL LA8014	Posing Tubs	57
LL LA8015	White Posing Tub Covers	57
LL LA8017	Baby Poser	57
LL LA8444	Skylite Rapid Bag	22
LL LA8446	Skylite Rapid Griphead	35, 45
LL LA8449	Skylite Rapid Crossbar Handle	22
LL LA8450	Aluminium Frame Support Kit	22, 35, 45
LL LB1105	Solo Background Support 3m (10')	53
LL LB1119	Telescopic crossbar	54
LL LB1120	Magnetic Background Support	52
LL LB1121	Magnetic Background Support Kit	52
LL LB1128	Heavy duty support for paper and vinyl roll up backgrounds (metal collars)	54
LL LB1142	Solo Background Support 4m (13') Heavy Duty	53
LL LB1143	Solo Background Support Extension 2m (6.5')	53
LL LB1592	Sand Bag	45, 56
LL LB56GB	Plain Collapsible Backgrounds 1.5m x 1.8m (5' x 6') Black / Mid Grey	30
LL LB56GW	Plain Collapsible Backgrounds 1.5m x 1.8m (5' x 6') White / Mid Grey	30
LL LB5705	Vintage Collapsible Backgrounds 1.5 x 2.1m (5' x 7') Tobacco/Olive	31
LL LB5706	Urban Collapsible Backgrounds Classic Red Brick / Distressed White Brick 1.5 x 2.1m	32
LL LB5707	Urban Collapsible Backgrounds Painted White Brick / Industrial Grey Brick 1.5 x 2.1m	32
LL LB5713	Urban Collapsible Backgrounds Painted Rusty Metal / Plaster Wall Brick 1.5 x 2.1m	32
LL LB5715	Urban Collapsible Backgrounds Painted Derelict Wall / Wooden Fenc Brick 1.5 x 2.1m	32
LL LB5720	Vintage Collapsible Backgrounds 1.5 x 2.1m Ink/Sage	31
LL LB5721	Vintage Collapsible Backgrounds 1.5 x 2.1m Walnut/Pewter	31
LL LB5722	Vintage Collapsible Backgrounds 1.5 x 2.1m Aubergine/Crimson	31
LL LB5730	Out of Focus Backgrounds Summer Foliage / City Lights 1.2m x 1.5m (4' x 5')	33
LL LB5731	Out of Focus Backgrounds Autumn Foliage / Seascape 1.2m x 1.5m (4' x 5')	33
LL LB5745	Vintage Collapsible Backgrounds 1.5 x 2.1m (5' x 7') Smoke/Concrete	31
LL LB5750JM	Joe McNally Ironworks Collapsible Background 1.5m x 2.1m (5' x 7')	31
LL LB5921	Plain Collapsible Backgrounds 1.8m x 2.15m (6' x 7') Black / White	30
LL LB6701	Plain Collapsible Backgrounds 1.8m x 2.15m (6' x 7') Black / White with train	30
LL LB6751	Plain Collapsible Backgrounds 1.8m x 2.15m (6' x 7') Blue / Pink	30
LL LB6752	Plain Collapsible Backgrounds 1.8m x 2.15m (6' x 7') Red / Purple	30
LL LB67GB	Plain Collapsible Backgrounds 1.8m x 2.15m (6' x 7') Black / Mid Grey	30
LL LB67GW	Plain Collapsible Backgrounds 1.8m x 2.15m (6' x 7') White / Mid Grey	30
LL LB6921	Plain Collapsible Backgrounds 1.8m x 2.75m (6' x 9') Black / White	30
LL LB7621	Panoramic Background - 4m (13') - Black	41
LL LB7622	Panoramic Background - 4m (13') - Green	42
LL LB7623	Panoramic Background - 4m (13') - White	41
LL LB7625	Panoramic Background Cover - 4m (13') - Black	41
LL LB7626	Panoramic Background Cover - 4m (13') - Green	42
LL LB7627	Panoramic Background Cover - 4m (13') - White	41
LL LB7761	Superwhite Vinyl Background 2.75m x 6m	50
LL LB7763	Superwhite Vinyl Background 3.5m x 6m	50
LL LB7765	Black Vinyl Background 2.75m x 6m	50
LL LB7901	Panoramic Background - 4m (13') - Granite	41
LL LB7902	Panoramic Background - 4m (13') - Limestone	41
LL LB7903	Panoramic Background Cover - 4m (13') - Granite	41
LL LB7904	Panoramic Background Cover - 4m (13') - Limestone	41
LL LB7924	Ezyframe Background 2 x 2.3m (6'7" x 7'5") Olive	35
LL LB7925	Ezyframe Cover Olive	35

Art. No	Description	Page
LL LB7926	Ezyframe Background 2 x 2.3m (6'7" x 7'5") Tobacco	35
LL LB7927	Ezyframe Cover Tobacco	35
LL LB7928	Ezyframe Background 2 x 2.3m (6'7" x 7'5") Smoke	35
LL LB7929	Ezyframe Cover Smoke	35
LL LB7930	Ezyframe Background 2 x 2.3m (6'7" x 7'5") Concrete	35
LL LB7931	Ezyframe Cover Concrete	35
LL LB7944	Panoramic Background Connection Kit 2.3m (7.5') Chroma Key Blue	43
LL LB7945	Panoramic Background Connection Kit 2.3m (7.5') Chroma Key Green	43
LL LB8803	HiLite Bottletops Super Black 1.8m x 2.15m (6' x 7')	38
LL LB8857	HiLite_Background 1.5m x 2.15m (5' x 7')	37
LL LB8858	Cleanable Vinyl Train For the 1.5m x 2.15m (5' x 7') HiLite	37
LL LB8867	HiLite_Background 1.8m x 2.15m (6' x 7')	37
LL LB8868	Cleanable Vinyl Train For the 1.8m x 2.15m (6' x 7') HiLite	37
LL LB8870	HiLite Bottletops Grey 1.8m x 2.15m (6' x 7')	38
LL LB8878	HiLite_Background 2.15m x 2.5m (7' x 8')	37
LL LB8879	Cleanable Vinyl Train For the 2.15m x 2.5m (7' x 8') HiLite	37
LL LB8881	HiLite Bottletops Chroma Key Green 1.8m x 2.15m (6' x 7')	38
LL LB8967	HiLite Shapers and Masks	39
LL LB8968	HiLite Shaper	39
LL LB8969	HiLite Window Voile	39
LL LB8990	HiLite_Background 1m x 1.4m (3'6" x 4'6")	37
LL LC5621	Plain Collapsible Backgrounds 1.5m x 1.8m (5' x 6') Black / White	30
LL LC5687	Chroma Key Collapsible Background 1.5m x 1.8m (5' x 6') Chroma Key Blue/ Green Reversible	48
LL LC5781	Chroma Key Curtains 3m x 3.5m (10' x 12') Green	49
LL LC5787	Chroma Key Curtains 3m x 3.5m (10' x 12') Reversible Blue/Green	49
LL LC5881	Chroma Key Curtains 3m x 7m (10' x 24') Green	49
LL LC5887	Chroma Key Curtains 3m x 7m (10' x 24') Reversible Blue/Green	49
LL LC5981	Chroma Key Collapsible Background 1.8m x 2.15m (6' x 7') Chroma Key Green	48
LL LC5987	Chroma Key Collapsible Background 1.8m x 2.1m (6' x 7') Chroma Key Blue/ Green Reversible	48
LL LC6981	Chroma Key Collapsible Background 1.8m x 2.75m (6' x 9') Chroma Key Green	48
LL LP9001	Paper Roll Backgrounds 2.72m x 11m (107"x36") Super White	51
LL LP9002	Paper Roll Backgrounds 2.72m x 11m (107"x36") Heaven	51
LL LP9004	Paper Roll Backgrounds 2.72m x 11m (107"x36") Corn	51
LL LP9005	Paper Roll Backgrounds 2.72m x 11m (107"x36") Navy	51
LL LP9006	Paper Roll Backgrounds 2.72m x 11m (107"x36") Wine	51
LL LP9008	Paper Roll Backgrounds 2.72m x 11m (107"x36") Red	51
LL LP9012	Paper Roll Backgrounds 2.72m x 11m (107"x36") Arctic Grey	51
LL LP9016	Paper Roll Backgrounds 2.72m x 11m (107"x36") Conker	51
LL LP9020	Paper Roll Backgrounds 2.72m x 11m (107"x36") Black	51
LL LP9024	Paper Roll Backgrounds 2.72m x 11m (107"x36") Marigold	51
LL LP9025	Paper Roll Backgrounds 2.72m x 11m (107"x36") Sandstone	51
LL LP9026	Paper Roll Backgrounds 2.72m x 11m (107"x36") Flint	51
LL LP9027	Paper Roll Backgrounds 2.72m x 11m (107"x36") Shadow Grey	51
LL LP9029	Paper Roll Backgrounds 2.72m x 11m (107"x36") Amethyst	51
LL LP9030	Paper Roll Backgrounds 2.72m x 11m (107"x36") Ocean	51
LL LP9031	Paper Roll Backgrounds 2.72m x 11m (107"x36") Kingfisher	51
LL LP9035	Paper Roll Backgrounds 2.72m x 11m (107"x36") Grass Green	51
LL LP9037	Paper Roll Backgrounds 2.72m x 11m (107"x36") Gala Pink	51
LL LP9038	Paper Roll Backgrounds 2.72m x 11m (107"x36") Primrose	51
LL LP9046	Paper Roll Backgrounds 2.72m x 11m (107"x36") Leaf Green	51
LL LP9047	Paper Roll Backgrounds 2.72m x 11m (107"x36") Aztec	51
LL LP9050	Paper Roll Backgrounds 2.72m x 11m (107"x36") White	51
LL LP9051	Paper Roll Backgrounds 2.72m x 11m (107"x36") Ivory	51
LL LP9058	Paper Roll Backgrounds 2.72m x 11m (107"x36") Royal	51
LL LP9060	Paper Roll Backgrounds 2.72m x 11m (107"x36") Pewter	51
LL LP9062	Paper Roll Backgrounds 2.72m x 11m (107"x36") Purple	51
LL LP9065	Paper Roll Backgrounds 2.72m x 11m (107"x36") Regal Blue	51
LL LP9071	Paper Roll Backgrounds 2.72m x 11m (107"x36") Yellow	51
LL LP9073	Paper Roll Backgrounds 2.72m x 11m (107"x36") Chroma Key Green	51
LL LP9101	Paper Roll Backgrounds 1.35m x 11m (53" x 36") Super White	51
LL LP9120	Paper Roll Backgrounds 1.35m x 11m (53" x 36") Black	51
LL LP9127	Paper Roll Backgrounds 1.35m x 11m (53" x 36") Shadow Grey	51
LL LP9201	Paper Roll Backgrounds 3.55m x 30m (140" x 98") Super White	51
LL LP9220	Paper Roll Backgrounds 3.55m x 30m (140" x 98") Black	51

Art. No	Description	Page
LL LR1250	EzyBalance 30cm (12") 18%	23
LL LR1558	XpoBalance 38cm (15")	23
LL LR2006	Collapsible Reflectors 50cm (20") Sunfire / White	15
LL LR2007	Collapsible Reflectors 50cm (20") Diffuser, 2 Stops	15
LL LR2028	Collapsible Reflectors 50cm (20") Sunlite / Soft Silver	15
LL LR2031	Collapsible Reflectors 50cm (20") Silver / White	15
LL LR2034	Collapsible Reflectors 50cm (20") Silver / Gold	15
LL LR2036	Collapsible Reflectors 50cm (20") Sunfire / Silver	15
LL LR2041	Collapsible Reflectors 50cm (20") Gold / White	15
LL LR2050	EzyBalance 50cm (20") 18%	23
LL LR2096	Bottletop Diffuser with Gold / White & Sunfire / Silver cover 50cm (20")	16
LL LR3006	Collapsible Reflectors 76cm (30") Sunfire / White	15
LL LR3007	Collapsible Reflectors 76cm (30") Diffuser, 2 Stops	15
LL LR3028	Collapsible Reflectors 76cm (30") Sunlite / Soft Silver	15
LL LR3031	Collapsible Reflectors 76cm (30") Silver / White	15
LL LR3034	Collapsible Reflectors 76cm (30") Silver / Gold	15
LL LR3036	Collapsible Reflectors 76cm (30") Sunfire / Silver	15
LL LR3041	Collapsible Reflectors 76cm (30") Gold / White	15
LL LR3050	EzyBalance 75cm (30") 18%	23
LL LR3096	Bottletop Diffuser with Gold / White & Sunfire / Silver cover 75cm (30")	16
LL LR3300	HaloCompact 82cm (32") Reflector Silver/White	7
LL LR3301	HaloCompact 82cm (32") Diffuser 2 Stop	7
LL LR3302	HaloCompact Covers 82cm (32") Reflector Cover Silver/White	7
LL LR3303	HaloCompact Covers 82cm (32") Diffuser Cover 2 Stop	7
LL LR3310	HaloCompact 82cm (32") Reflector Sunlite/Soft Silver	7
LL LR3311	HaloCompact Covers 82cm (32") Reflector Cover Sunlite/Soft Silver	7
LL LR3320	HaloCompact 82cm (32") Difflector Soft Silver	7
LL LR3321	HaloCompact Covers 82cm (32") Difflector Cover Soft Silver	7
LL LR3507	TriGrip Mini 45cm (18") Diffuser, 2 Stops	11
LL LR3528	TriGrip Mini 45cm (18") Sunlite / Soft Silver	11
LL LR3531	TriGrip Mini 45cm (18") Silver / White	11
LL LR3536	TriGrip Mini 45cm (18") Sunfire / Silver	11
LL LR3541	TriGrip Mini 45cm (18") Gold / White	11
LL LR3551	TriGrip Mini 45cm (18") Diffuser, 1 Stop	11
LL LR3607	TriGrip 75cm (30") Diffuser, 2 Stops	11
LL LR3628	TriGrip 75cm (30") Sunlite / Soft Silver	11
LL LR3631	TriGrip 75cm (30") Silver / White	11
LL LR3636	TriGrip 75cm (30") Sunfire / Silver	11
LL LR3641	TriGrip 75cm (30") Gold / White	11
LL LR3651	TriGrip 75cm (30") Diffuser, 1 Stop	11
LL LR3652	TriGrip Difflector 75cm (30") Soft Silver	14
LL LR3696	TriFlip 8:1 Kit75cm (30")	12
LL LR3752	TriGrip Difflector Large 1.2m (48") Soft Silver	14
LL LR3806	Collapsible Reflectors 95cm (38") Sunfire / White	15
LL LR3807	Collapsible Reflectors 95cm (38") Diffuser, 2 Stops	15
LL LR3828	Collapsible Reflectors 95cm (38") Sunlite / Soft Silver	15
LL LR3831	Collapsible Reflectors 95cm (38") Silver / White	15
LL LR3834	Collapsible Reflectors 95cm (38") Silver / Gold	15
LL LR3836	Collapsible Reflectors 95cm (38") Sunfire / Silver	15
LL LR3841	Collapsible Reflectors 95cm (38") Gold / White	15
LL LR3896	Bottletop Diffuser with Gold / White & Sunfire / Silver cover 95cm (38")	16
LL LR4806	Collapsible Reflectors 120cm (48") Sunfire / White	15
LL LR4807	Collapsible Reflectors 120cm (48") Diffuser, 2 Stops	15
LL LR4828	Collapsible Reflectors 120cm (48") Sunlite / Soft Silver	15
LL LR4831	Collapsible Reflectors 120cm (48") Silver / White	15
LL LR4834	Collapsible Reflectors 120cm (48") Silver / Gold	15
LL LR4836	Collapsible Reflectors 120cm (48") Sunfire / Silver	15
LL LR4841	Collapsible Reflectors 120cm (48") Gold / White	15
LL LR7206	Collapsible Reflectors 1.8 x 1.2m (6' x 4') Sunfire / White	15
LL LR7207	Collapsible Reflectors 1.8 x 1.2m (6' x 4') Diffuser, 2 Stops	15
LL LR7228	Collapsible Reflectors 1.8 x 1.2m (6' x 4') Sunlite / Soft Silver	15
LL LR7231	Collapsible Reflectors 1.8 x 1.2m (6' x 4') Silver / White	15
LL LR7234	Collapsible Reflectors 1.8 x 1.2m (6' x 4') Silver / Gold	15
LL LR7236	Collapsible Reflectors 1.8 x 1.2m (6' x 4') Sunfire / Silver	15
LL LR7241	Collapsible Reflectors 1.8 x 1.2m (6' x 4') Gold / White	15
LL LR811	Skylite Rapid Frame Small 1.1m x 1.1m (3'6" x 3'6")	19
LL LR81101R	Skylite Rapid Covers Small 1.1m x 1.1m (3'6" x 3'6") 0.75 Stop Diffuser	19

Art. No	Description	Page
LL LR81102R	Skylite Rapid Covers Small 1.1m x 1.1m (3'6" x 3'6") Black Velour	19
LL LR81106R	Skylite Rapid Covers Small 1.1m x 1.1m (3'6" x 3'6") Sunfire / White	19
LL LR81107R	Skylite Rapid Covers Small 1.1m x 1.1m (3'6" x 3'6") 1.25 Stop Diffuser	19
LL LR81121R	Skylite Rapid Covers Small 1.1m x 1.1m (3'6" x 3'6") Black / White	19
LL LR81131R	Skylite Rapid Covers Small 1.1m x 1.1m (3'6" x 3'6") Silver / White	19
LL LR81143RC	Skylite Rapid Small Kit	19
LL LR812	Skylite Rapid Frame Medium 1.1m x 2m (3'6" x 6'6")	19
LL LR81201R	Skylite Rapid Covers Medium 1.1m x 2m (3'6" x 6'6") 0.75 Stop Diffuser	19
LL LR81202R	Skylite Rapid Covers Medium 1.1m x 2m (3'6" x 6'6") Black Velour	19
LL LR81206R	Skylite Rapid Covers Medium 1.1m x 2m (3'6" x 6'6") Sunfire / White	19
LL LR81207R	Skylite Rapid Covers Medium 1.1m x 2m (3'6" x 6'6") 1.25 Stop Diffuser	19
LL LR81221R	Skylite Rapid Covers Medium 1.1m x 2m (3'6" x 6'6") Black / White	19
LL LR81231R	Skylite Rapid Covers Medium 1.1m x 2m (3'6" x 6'6") Silver / White	19
LL LR81243RC	Skylite Rapid Medium Kit	19
LL LR815	Skylite Rapid Frame Midi 1.5m x 1.5m (5' x 5')	19
LL LR81501R	Skylite Rapid Covers Midi 1.5m x 1.5m (5' x 5') 0.75 Stop Diffuser	19
LL LR81507R	Skylite Rapid Covers Midi 1.5m x 1.5m (5' x 5') 1.25 Stop Diffuser	19
LL LR81521R	Skylite Rapid Covers Midi 1.5m x 1.5m (5' x 5') Black / White	19
LL LR81531R	Skylite Rapid Covers Midi 1.5m x 1.5m (5' x 5') Silver / White	19
LL LR81544R	Skylite Rapid Midi Kit	19
LL LR822	Skylite Rapid Frame Large 2m x 2m (6'6" x 6'6")	19
LL LR82201R	Skylite Rapid Covers Large 2m x 2m (6'6" x 6'6") 0.75 Stop Diffuser	19
LL LR82202R	Skylite Rapid Covers Large 2m x 2m (6'6" x 6'6") Black Velour	19
LL LR82206R	Skylite Rapid Covers Large 2m x 2m (6'6" x 6'6") Sunfire / White	19
LL LR82207R	Skylite Rapid Covers Large 2m x 2m (6'6" x 6'6") 1.25 Stop Diffuser	19
LL LR82221R	Skylite Rapid Covers Large 2m x 2m (6'6" x 6'6") Black / White	19
LL LR82231R	Skylite Rapid Covers Large 2m x 2m (6'6" x 6'6") Silver / White	19
LL LR82243RC	Skylite Rapid Large Kit	19
LL LR833	Skylite Rapid Frame Extra Large 3m x 3m (10' x 10')	19
LL LR83301R	Skylite Rapid Covers Extra Large 3m x 3m (10' x 10') 0.75 Stop Diffuser	19
LL LR83302	Skylite Rapid Covers Extra Large 3m x 3m (10' x 10') Black Velour	19
LL LR83307R	Skylite Rapid Covers Extra Large 3m x 3m (10' x 10') 1.25 Stop Diffuser	19
LL LR83344R	Skylite Rapid Extra Large Kit	19
LL LRCASE1025	Skylite Rigid Case 103cm x 19cm x 14cm	22
LL LRCASE775	Skylite Rigid Case 78cm x 19cm x 14cm	22
LL LS1158	4 section standard lighting stand with plastic collars	56
LL LS1159	4 section air cushioned lighting stand with metal collars	56
LL LS1160	4 section heavy duty air cushioned lighting stand with metal collars	56
LL LS2211	Ezybox Micro W:20cm x H:14cm (8" X 5.5")	25
LL LS2350N	Ezybox Pro Speedring Plate (Bron)	28
LL LS2351N	Ezybox Pro Speedring Plate (Bowens)	28
LL LS2352N	Ezybox Pro Speedring Plate (Elinchrom)	28
LL LS2353N	Ezybox Pro Speedring Plate (Balcar)	28
LL LS2354N	Ezybox Pro Speedring Plate (Profoto)	28
LL LS2414	Ezybox Hotshoe Bracket (with standard flash mount)	25
LL LS2438	Ezybox Hotshoe Small	24
LL LS2462	Ezybox Hotshoe Medium	24
LL LS2480	Ezybox Hotshoe Large	24
LL LS2601	Strobo Direct to Flashgun Bracket	36
LL LS2701	Ezybox Pro Portable Flash Bracket	27
LL LS2705	Elinchrom Quadra/Profoto Spigot	28
LL LS2962	Fabric Grid for LL LS2462 Ezybox Hotshoe Medium 54cm (21")	25
LL LS2980	Fabric Grid for LL LS2480 Ezybox Hotshoe Large 76cm (30")	25
LL LS3030	Ezybox Pro Strip 150cm x 30cm	27
LL LU2127	Trifold Umbrella	13

Country	Company	Telephone Number	Web Site
Algeria	Sabi Systems	+2132 192 1860	www.sabisystems.com
Argentina	Dexel SRL	+54 11 4687 3001	www.dexel.com
Argentina	Nicatel SRL	+54 11 4777 9797	www.teletecnica.com
Argentina	Santiago Distrifot SRL	+54 11 4308 3686	www.distrifot.com.ar
Australia	Vitec Imaging Distribution	+61 1300 123 325	www.adeal.com.au
Austria	Photon GmbH	+43 7272 757970	www.foto-mueller.at
Bangladesh	Trade Corporation	+880 2 9555354	www.tradeco.com.bd
Belarus	Office Technologies JSC	+375 17 267 41 21	www.offtech.by
Belgium	Servix.BE	+32 3 887 77 20	www.servix.be
Bolivia	Dadco Technology	+591 78848871	www.dadcotechnology.com.bo
Bosnia Hercegovina	Refot BH d.o.o	+387 51 324 440	www.refot.com
Brazil	Lumatek Ltda.	+55 1150602900	www.tripes.com.br
Bulgaria	Dynaphos	+359 2 4901 555	www.dynaphos.com
Canada	Gentec International	+1 905 513 7733	www.manfrotto.ca
Chile	Matrix LTDA	+56 2 237 29 911	www.matrixvideo.cl
China	Vitec Imaging Distribution Shanghai Ltd	+86 21 62360808	www.manfrotto.cn
Columbia	Congo Films (COLOMBIA)	+57 1 630 4792	www.congofilms.tv
Costa Rica	Dima Industrial y Comercial S.A.	+506 2234 8500	www.dima.cr
Costa Rica	Imax de Costa Rica S.A.	+506 4051 0000	www.imax.co.cr
Croatia	Prizma d.o.o.	+385 1 3895 127	www.prizma-foto.hr
Cyprus	Mangoian Bros. Ltd	+357 22 672 928	www.mangoian.com
Czech Republic	E K G s.r.o.	+42 0495538132	www.ekfoto.cz
Denmark	Aifo AB	+46 8 720 06 45	www.aifo.se
Estonia	Nordic Digital AS	+372 733 7700	www.nordic-digital.ee
Finland	Color-Kolmio Oy	+358 20 753 0359	www.colorkolmio.fi
France	Prophot	+33 1 81 72 01 03	www.prophot.com
Germany	Vitec Imaging Distribution	+49 2203 202130	www.manfrotto.de
Greece	H. Alexandrou & Co E.E.	+30 210 72 36 847	www.albapv.gr
Hong Kong	Advance Multimedia Company Limited	+852 2332 8961	www.hkosm.hk
Hungary	Luminis Ltd.	+36 1 371 1983	www.manfrotto.hu
Iceland	Beco	+354 533 3411	www.beco.is
India	Srishti Digilife Private Limited	+91 44 24364778	www.srishtidigilife.co.in
Ireland	Vitec Imaging Distribution	+44 (0)1530 566090	www.manfrotto.co.uk
Israel	A.B.S. Altman Broadcast Services	+972 (0)3-7682000	www.absphoto.co.il
Italy	Vitec Imaging Distribution	+39 0424 555554	www.manfrotto.it
Japan	Vitec Imaging Distribution	+81 3-5404-6871	www.manfrotto.jp
Kazakhstan	Acis Distribution	+7 727 2642222	www.acis-d.com
Korea, South	Saeki P&C Co., Ltd.	+82 2 3668 3114	www.saeki.co.kr
Kuwait	Advanced Media Trading	+971 4 352 99 77	www.amt.tv
Kyrgyzstan	Acis Distribution	+7 727 2642222	www.acis-d.com
Latvia	Sia Mikrocentrs	+371 67450149	www.mikrocentrs.com
Lebanon	Gulbenk Corporation	+961 4 723 777	www.gulbenkcorporation.com
Lithuania	UAB Fototechnika	+370 658 00700	www.fototechnika.lt
Luxembourg	Lecuit Opto-Technical SA	+352 495607-1	www.lecuit.lu
Macedonia	Refot BH d.o.o	+389 23215985	www.refot.com
Malaysia	V Photo Sdn. Bhd.	+603-7958 3788	www.vphoto.com.my
Malta	The Foto Grafer Ltd	+356 21 66 01 66	www.thefotografer.com
Mexico	Turicia SA DE CV	+52 55 55 59 39 80	www.turicia.com
Moldova	Rolencom Srl	+373 22 63 66 56	www.rolencom.md
Morocco	Abchir	+212 522 86 44 51	www.abchir.ma
Nepal	New Snapper Photo Goods	+977 1223895	www.snapperphoto.com
Netherlands	Transcontinenta BV	+31 252 687 555	www.transcontinenta.nl
New Zealand	Lacklands LP	+64 9 630 0753	www.lacklands.co.nz
Norway	Bresson AS	+47 99 50 13 50	www.bresson.no
Pakistan	Super Enterprises	+92 42 37228254	www.camtrnx.com.pk
Philippines	MQ Lighting Enterprises, Inc.	+63 28908858	www.mqlightings.com
Poland	FOTO 7 S.C.	32 331 37 04	www.foto7.pl
Romania	Simus Trading s.r.l.	+40 21 411 65 30	www.simus.ro
Russia	Flama LLC	+7 495 646 36 60	www.avras.ru
Russia	LLC Corporation DNK	+7 495 232-38-28	www.dnk.ru
Saudi Arabia	Advanced Media Trading	+971 4 352 99 77	www.amt.tv
Serbia	Refot B	+381 11 3087004	www.refot.com
Singapore	Cathay Photo Store Pte Ltd	+65 6225 3788	www.cathayphoto.com.sg
Slovenia	Cumulus d.o.o.	+386 4 2016 534	www.cumulus.si
South Africa	Singer Photo	+27 11 791 2208	www.singerphoto.co.za
Spain	Cromalite SL	+34 93 436 05 61	www.cromalite.com
Sweden	Aifo AB	+46 8 720 06 45	www.aifo.se
Switzerland	Profot AG	+41 56 675 30 60	www.profot.ch
Taiwan	Cheng Seng Trading Co.,Ltd	+886 2 8511 1311	www.chengseng.com.tw
Thailand	Shriro Marketing (Thailand) Limited	+66 2 792 5000	www.shriromarketing.co.th
Turkey	Zoom lthalat	+90 212 269 7676	www.zoomlthalat.com
Turkmenistan	Acis Distribution	+7 727 2642222	www.acis-d.com
UAE	Advanced Media Trading	+971 4 352 99 77	www.amt.tv
UK	Vitec Imaging Distribution	+44 (0)1530 566090	www.manfrotto.co.uk
Ukraine	Machouse LLC	+380 44 4617878	www.manfrotto.com.ua
USA	Vitec Imaging Distribution Inc	+1 201 818-9500	www.manfrotto.us
Uzbekistan	Acis Distribution	+7 727 2642222	www.acis-d.com
Video Dealers			
Belgium	ES Broadcast Media	+32 16 40 40 20	www.broadcast-media



Quality



Innovation



Portability