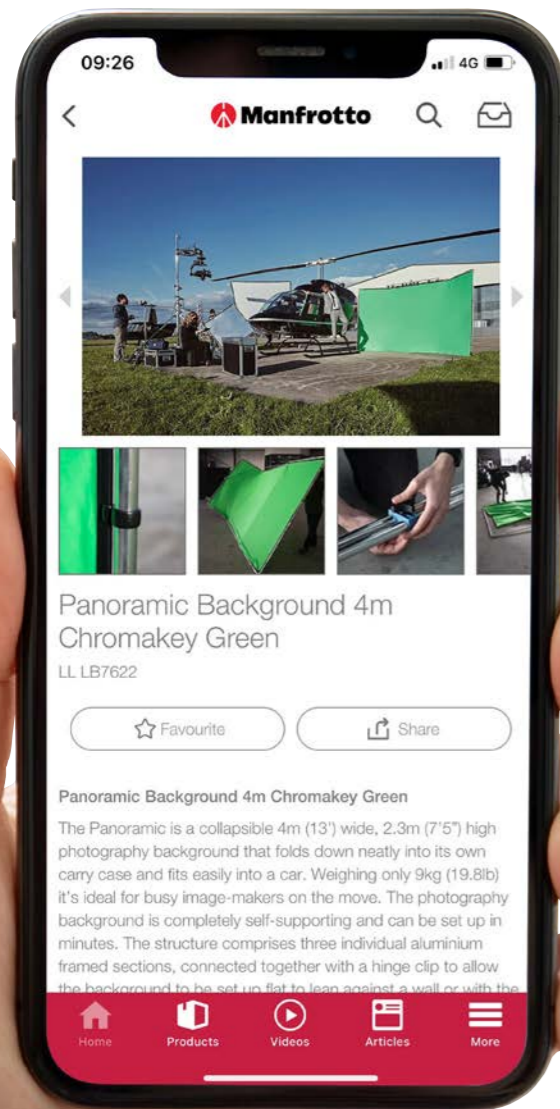


**LIGHTING CONTROLS AND
BACKGROUND SOLUTIONS**





Download our App

Download the Manfrotto App from iTunes or Play Store for the following benefits :

- Browse all of our products
- Watch our videos in one place
- Read articles and learn about new products
- Receive notifications when new content is added
- View and download product instructions



Contents

| | | | | | |
|---------------------------------------|----|---|----|-------------------------------|----|
| The Quality | 4 | Multi-fit Softboxes | | Seamless Backgrounds | |
| Reflectors & Diffusers | | Ezybox Pro | 26 | Superwhite Vinyl Background | 50 |
| HaloCompact | 7 | Ezybox Pro Strip | 28 | Vinyl Roll Backgrounds | 51 |
| Halo Compact Plus | 9 | Ezybox Pro - Octa | 29 | Background Supports | |
| TriGrip | 11 | Portable Backgrounds | | Magnetic | 52 |
| TriFlip 8:1 | 12 | Plain colours | 30 | Solo | 53 |
| TriGrip Bracket | 13 | Vintage Backgrounds | 31 | Brackets & Handles | |
| Trifold Umbrella | 13 | Urban Backgrounds | 32 | Tiltheads | 55 |
| TriGrip Difflector | 14 | Out of Focus Backgrounds | 33 | Lighting Stands | |
| Circular and Panelite Reflectors | 15 | EzyFrame Vintage | 34 | Stands | 56 |
| Bottletops 5:1 | 16 | HiLite Backgrounds | 37 | Posing | |
| Triflector MkII | 17 | HiLite Bottletops | 38 | Posing Tubes | 57 |
| Skylite Rapid | 18 | Panoramic Backgrounds | 40 | Baby Posing | 57 |
| Skylite Rapid DoPchoice | | StudioLink Chroma Key Background | | Full Product Index | 58 |
| 60 Degree SNAPGRID® | 20 | Panoramic Background Chroma Key | 42 | | |
| Colour & Exposure Controls | | StudioLink | 44 | | |
| Skylite Rapid Accessories | 22 | Vinyl Backgrounds and Floors | | | |
| Aluminium Frame Support Kit | 22 | Vinyl Floor Strip | 46 | | |
| White Balance and Exposure | 23 | Vinyl Background / Floor | 47 | | |
| EzyBalance | 23 | Gaffer Tape | 47 | | |
| XpoBalance | 23 | Chroma Key Backgrounds | | | |
| Flashgun Softboxes | | Collapsibles | 48 | | |
| Ezybox Hotshoe | 24 | Curtain | 49 | | |
| Ezybox Hotshoe Accessories | 25 | | | | |
| Ezybox Micro | 25 | | | | |

Connect with the world of



Some of the products featured in this brochure may not be available in your country. Product codes may also differ. Please check availability and product codes with your local distributor.

The specifications shown in this catalogue are based upon the latest information at the time of printing. In line with our policy of continual product development Vitec Imaging Solutions UK Ltd. reserve the right to make changes at any time, without notice, to specifications and models and to discontinue items.

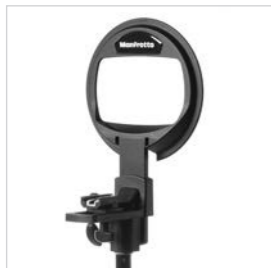
The Quality



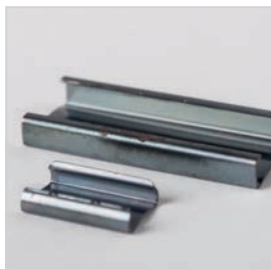
Manfrotto we not only make a range of innovative accessories to help photographers and film-makers take great shots, but we also take pride in offering world-class products manufactured to the highest quality, ensuring they can withstand the repeated daily use of the most demanding image-maker.

To keep our leading edge, we make significant investments into research and development to ensure that we can continue to launch new and innovative products to meet the needs of the ever-changing photo and video markets. Allied to our strict quality standards and attention to detail,

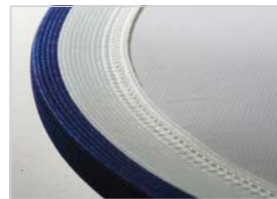
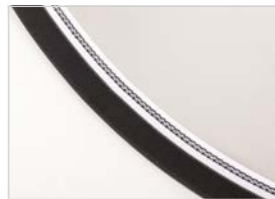
we are always looking at ways to improve the way our products are manufactured, too. We are consistently developing new ideas and technology which leads to investment in bespoke tooling and mouldings. With the vast majority of our fabric-based products made in our huge Leicestershire factory, we retain close control over quality.



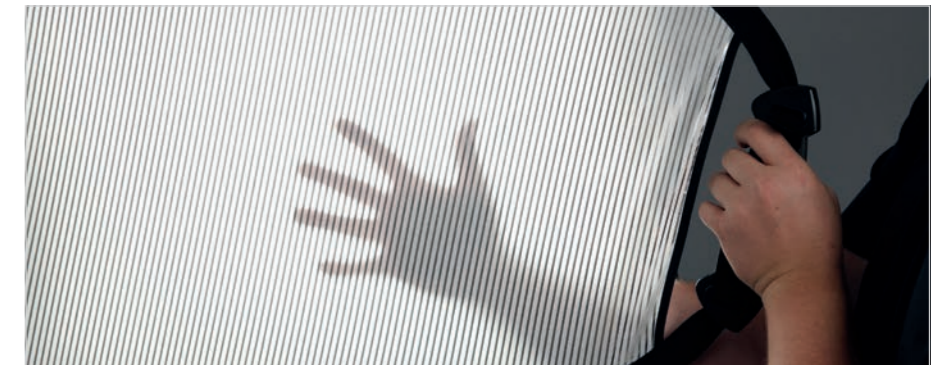
High quality sprung steel is used inside all of our collapsible products. The steel is 'dressed' to ensure all the sharp edges and dirt are removed to ensure no damage is incurred during use and provide maximum longevity. To join the ends of the steel together we use a range of specially designed, heat treated clips that guarantee a permanently strong fix for the lifetime of the product. For added peace of mind we offer a lifetime warranty on the steel rim in all of our products.



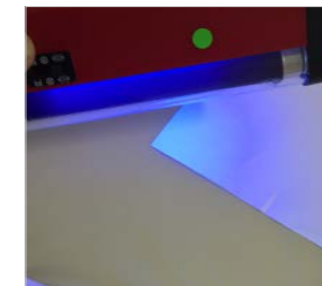
The steel rim is incorporated into our products by inserting it into our specially designed rim tape. The rim tape is made from a hard wearing, woven elasticated construction designed to withstand the typical knocks and scrapes from daily use by a busy photographer. The thick woven construction prevents the steel from wearing through and potentially weakening the structure of the product.



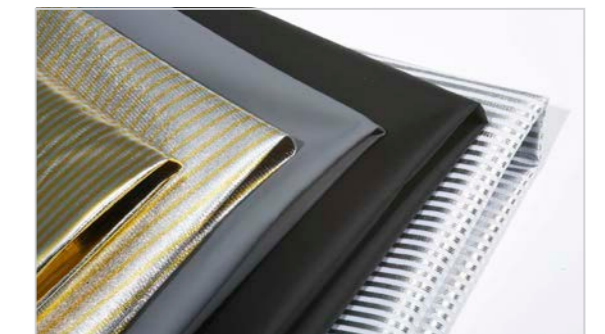
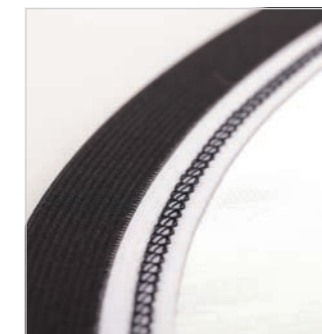
We apply the same level of detail and quality to all of our textiles as well. Each fabric is manufactured to meet the needs of the product, specifying the construction of the weave and the type of raw materials used. Each fabric is then coated or processed depending on the technical performance required. The textiles are also tested to make sure they meet the correct performance levels over repeated use and in adverse conditions. We have developed a range of over 10 different technical fabrics used to manufacture our products, including our patent protected innovative TriGrip Difflector fabric.



Our diffuser fabrics are manufactured using only the finest whiteners to reduce any chance of unwanted colourcast. The fabric is also specially coated to ensure colour balance and a uniform spread of light as it is passed through the material, avoiding typical issues such as irregular distribution and hot spots.



Our reflective surfaces are also specifically designed for our products and not general purpose textiles. We incorporate the correct level of stretch into the weave of all our fabrics to ensure the foil surface remains intact and does not crack under tension and lead to delamination. We also use the highest quality adhesive and lamination processes to ensure the foil remains bonded to the textile throughout the products lifetime and provides a uniform opaque surface to bounce the light.



And finally to hold our products together we use a triple thread, twin needle, loop stitch which provides maximum strength and durability.



PATENT PENDING HaloCompact

Features and Benefits

- ▶ Ultra compact when folded down
- ▶ Lightweight construction
- ▶ Incorporates a 1/4" thread in the handle
- ▶ Fits easily in a camera bag

Specifications

| HaloCompact 82cm (32") | Code |
|-------------------------------------|-----------|
| Reflector Silver/White | LL LR3300 |
| Reflector Sunlite/Soft Silver | LL LR3310 |
| Diffuser 2 Stop | LL LR3301 |
| Diffuser Soft Silver | LL LR3320 |
| HaloCompact Covers 82cm (32") | Code |
| Reflector Cover Silver/White | LL LR3302 |
| Reflector Cover Sunlite/Soft Silver | LL LR3311 |
| Diffuser Cover 2 Stop | LL LR3303 |
| Diffuser Cover Soft Silver | LL LR3321 |

Silver / White



Sunlite/Soft Silver



Diffuser, 2 Stop



Soft Silver



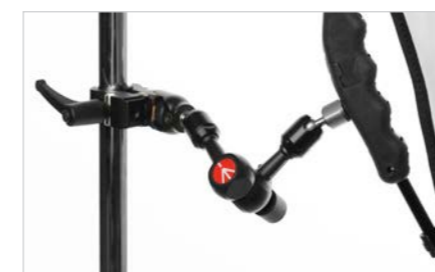
The HaloCompact boasts a patent pending design concept that makes the everyday reflector and diffuser panel even more portable than ever!

Unlike many traditional reflector/diffuser panels that incorporate a steel rim pop up design, the 82cm (32") HaloCompact is constructed using Lastolite By Manfrotto's new innovative RapidExoframe™ technology. The collapsible lightweight aluminium frame quickly slots together and the reflector or diffuser fabric simply clips onto the frame. The cleverly designed RapidExoframe™ construction allows the frame to breakdown into small multiple sections and along with the folded fabric packs into a carry case measuring only 6.5 x 27 x 6.5cm (2.5" x 10.5" x 2.5") weighing only 390g (reflector and case). The ultra-compact folded dimensions make the HaloCompact the perfect 'always with you' solution for Iimagemakers on the move.

The HaloCompact also features an ergonomically designed handle so it can easily be held and accurately positioned with one hand. The handle also incorporates a very useful 1/4" thread (plus a 1/4" to 1/4" adaptor), enabling it to be easily attached to various different support systems, to offer secure positioning further away from camera position.



HaloCompact Reflector Silver/White



Halo Compact Plus



Features and Benefits

- ▶ 46% larger surface area than the regular HaloCompact
- ▶ Compact pack size
- ▶ Ergonomic Grip
- ▶ Easy to set up
- ▶ Features a 1/4" thread mount (plus a 1/4" to 1/4" adaptor)

Specifications

| | |
|------------------------------|-----------|
| HaloCompact Plus 98cm (??") | Code |
| Reflector Silver/White | LL LR3331 |
| Diffuser 2 Stop | LL LR3333 |
| HaloCompact Plus Covers 98cm | Code |
| Reflector Cover Silver/White | LL LR3332 |
| Diffuser Cover 2 Stop | LL LR3334 |

Silver / White



Diffuser, 2 Stop



The HaloCompact Plus is the perfect 'always with you' compact tool ready to be quickly deployed when its essential to take control or manipulate the light.

With a 98cm (38") diameter and a surface area over 46% larger than the regular 82cm (32") HaloCompact this new addition is the largest yet, making it ideal for photo and video shoots when working with couples, small family groups or when shooting larger still life and product set ups .

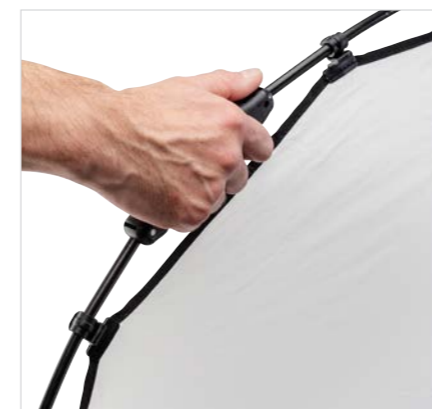
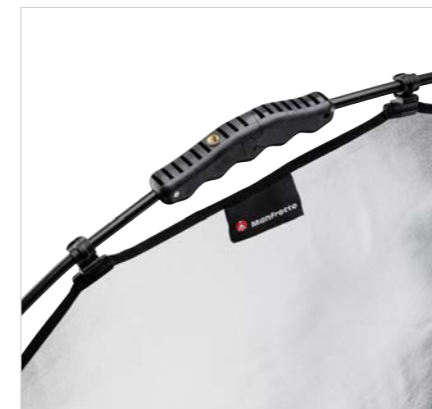
The rigid frame of the HaloCompact Plus is constructed using Manfrotto's RapidExoFrame™ technology. The collapsible lightweight aluminium frame quickly slots together and the reflector or diffuser fabric cover simply clips onto the frame using a newly designed ergonomic clip, offering more flex during assembly to make set up even easier. The cleverly designed RapidExoFrame™ construction allows the frame to breakdown into small multiple sections and along with the folded cover, packs into a carry case measuring only 29.5cm x 10.5cm x 6cm (11.6" x 4.1" x 2.3") weighing only 450g (15.8oz).

The ultra-compact folded dimensions make the HaloCompact Plus the perfect solution for imagemakers on the move or with very limited carrying space. It now means a reflector or diffuser can always be carried in a camera bag without compromising. A handy carabiner style clip also allows the user to clip the HaloCompact Plus to the outside of their camera bag so that it is always within easy reach.

The HaloCompact Plus features an ergonomically designed handle so the reflector can easily be held and accurately positioned with one hand. The handle also incorporates a very useful 1/4" thread (plus a 1/4" to 1/4" adaptor), enabling the reflector to easily attach to various support systems such as arms and light stands.

The HaloCompact Plus is also available as a 2 stop diffuser. Kits include the RapidExoFrame™, 1x cover, carry case and 1/4" to 1/4" adaptor. Covers are also available separately.

HaloCompact Plus Cover 98cm (38") 2 Stop Diffuser. A 2 stop diffuser cover only for use with the HaloCompact 98cm (38") frame.



TriGrip

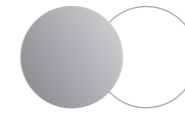


TriGrip designed by Gary Astill. A registered design.

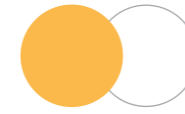
Features and Benefits

- ▶ Hold the reflector with just one hand
- ▶ Hold 2 reflectors, one in each hand
- ▶ New moulded handle with strap
- ▶ Double sided
- ▶ Collapses to a third of its original size

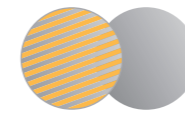
Silver / White



Gold / White



Sunfire / Silver



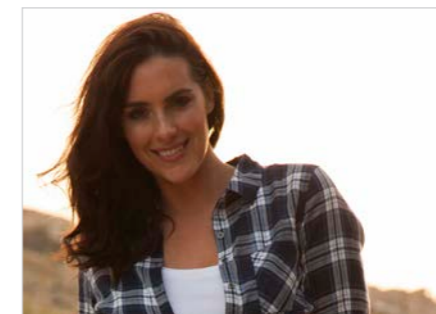
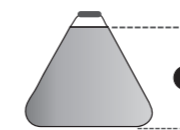
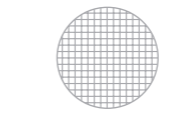
Sunlite / Soft Silver



Diffuser 1 Stop



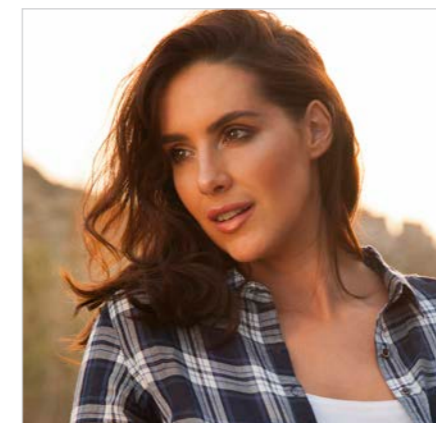
Diffuser 2 Stops



Without TriGrip



Without TriGrip



With TriGrip



With TriGrip

Specifications

| TriGrip Mini | A | Code | TriGrip | A | Code |
|------------------------|------------|-----------|-------------------------|------------|-----------|
| Silver / White | 45cm (18") | LL LR3531 | Silver / White | 75cm (30") | LL LR3631 |
| Gold / White | 45cm (18") | LL LR3541 | Gold / White | 75cm (30") | LL LR3641 |
| Sunfire / Silver | 45cm (18") | LL LR3536 | Sunfire / Silver | 75cm (30") | LL LR3636 |
| Sunlite / Soft Silver | 45cm (18") | LL LR3528 | Sunlite / Soft Silver | 75cm (30") | LL LR3628 |
| Diffuser, 1 Stop | 45cm (18") | LL LR3551 | Diffuser, 1 Stop | 75cm (30") | LL LR3651 |
| Diffuser, 2 Stops | 45cm (18") | LL LR3507 | Diffuser, 2 Stops | 75cm (30") | LL LR3607 |
| Collapses to 20cm (8") | | | Collapses to 30cm (12") | | |



The triangular structure of the TriGrip makes it easy to hold in one hand with the camera in the other or for an assistant to hold one in each hand.



The securing strap allows the user to support the reflector without actually gripping the handle, reducing pressure on the wrist and fingers when held for prolonged periods.



The TriFlip covers make the TriGrip even more versatile. Simply slide the TriGrip into the cover to change the surface.

TriFlip 8:1

Never get caught out again, up to 8 surfaces in the same bag. The TriFlip are designed to increase the versatility of the TriGrip reflector. Simply insert the TriGrip into the TriFlip sleeve for instant access. TriFlip surfaces: Silver, White, Soft Silver, Gold, Sunfire, Sunlite and Black.



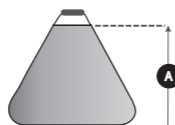
Features and Benefits

- ▶ Sleeves are double sided and reversible
- ▶ Eight different surfaces
- ▶ Set up in seconds
- ▶ Taut professional finish

Specifications

| TriFlip 8:1 | A | Code |
|-----------------|------------|-----------|
| TriFlip 8:1 Kit | 75cm (30") | LL LR3696 |

Kits contain:
 1x TriGrip 2 Stop diffuser
 2x Double sided, reversible TriFlip covers:
 - Silver / Soft Silver, Sunlite / Sunfire
 - Gold / Black, White / Black



Features and Benefits

- ▶ Ideal for photographers who work alone
- ▶ Compact foldaway design
- ▶ Compatible with battery operated flash guns
- ▶ Multi position ball joint connector

Specifications

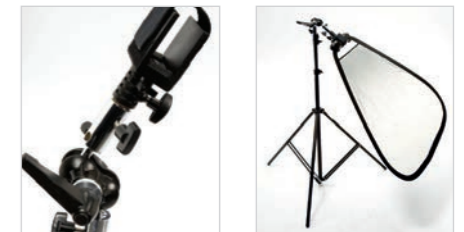
| TriGrip Bracket | Code |
|------------------|-----------|
| TriGrip Bracket* | LL LA2430 |

* Not recommended for use with the large TriGrip.



The TriGrip bracket is ideal for photographers who work alone and want to support the TriGrip reflector on one of our extending handles, a lighting stand, tripod or any other type of fixing bracket (a spigot connector may be required). Simply place the moulded TriGrip handle into the bracket and secure it in place with the strap. The ball joint connector enables you to then position the TriGrip exactly where you want leaving your hands free to operate the camera.

The bracket can be used to support the TriGrip when working with ambient light or in conjunction with battery operated flash using the flash gun attachment arm to bounce light off the reflectors surface or shoot through a diffusing panel.

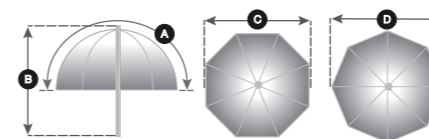


Trifold Umbrella

The ultimate compact shoot through umbrella for the photographer who needs to be mobile. Featuring a triple fold mechanism, the Trifold Umbrella folds down to an ultra-compact size, making it easy to slip into a camera bag. Great for using with compact flashguns.

Features and Benefits

- ▶ 10mm (0.4") shaft
- ▶ Lightweight and compact
- ▶ Ideal for use with flashguns



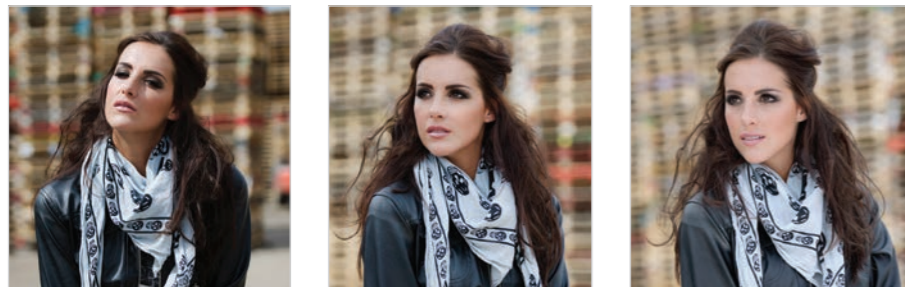
Specifications

| Style | A | B | C | D | Code |
|------------------|-------------|------------|--------------|------------|-----------|
| Trifold Umbrella | 112cm (44") | 39cm (15") | 89.5cm (35") | 98cm (39") | LL LU2127 |

TriGrip Difflector PATENTED

The TriGrip Difflector is the world's first dual purpose reflector panel which can be used as a diffuser (2.3 stops) and a bounce reflector. The unique fabric developed for this product allows light to pass through one side and bounce off the other side, making it a truly versatile product whatever the lighting conditions. The difflector is available with a Soft Silver reflective surface.

The TriGrip Difflector also features the unique TriGrip moulded handle for accurate positioning of the reflector with just one hand.



Without TriGrip Difflector With Difflector diffuser only With Difflector diffuser & Soft Silver reflector

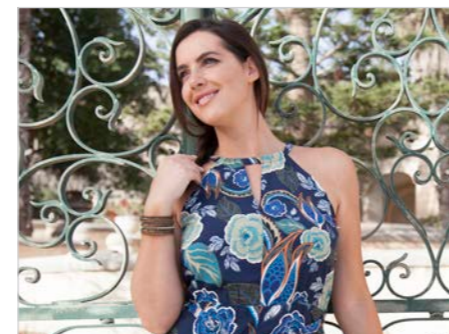
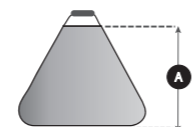


Features and Benefits

- ▶ Hold the reflector with just one hand
- ▶ Hold two reflectors one in each hand
- ▶ Use as a diffuser or a bounce reflector
- ▶ Collapses to a third of its original size

Specifications

| TriGrip Difflector | A | Code |
|--------------------------------------|------------|-----------|
| TriGrip Difflector Soft Silver | 75cm (30") | LL LR3652 |
| TriGrip Difflector Large Soft Silver | 1.2m (48") | LL LR3752 |

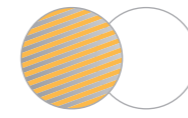


Features and Benefits

- ▶ Collapsible / Reversible
- ▶ Lifetime rim guarantee
- ▶ Upgraded rim tape
- ▶ Six useful sizes and six essential colours
- ▶ Double-coated reflective surfaces
- ▶ Collapses to a third of its original size



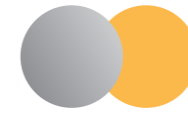
Sunfire / White Panelite only



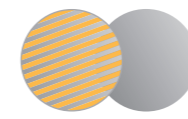
Silver / White Panelite only



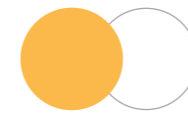
Silver / Gold Panelite only



Sunfire / Silver Panelite only



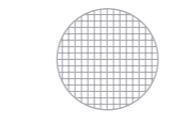
Gold / White Panelite only



Sunlite / Soft Silver Panelite only



Diffuser, 2 Stops Panelite and Circular



Circular and Panelite Reflectors

The original and industry leading collapsible reflectors.

As well as the lifetime guarantee on reflector steel, we have also upgraded the rim tape on all reflectors to make them even more durable.



Specifications

| Collapsible Reflectors | | | | | Panelite |
|------------------------|------------|------------|------------|-------------|----------------------|
| Open Sizes | 50cm (20") | 76cm (30") | 95cm (38") | 120cm (48") | 1.8 x 1.2m (6' x 4') |
| Collapsed Sizes | 24cm (9") | 30cm (12") | 40cm (16") | 48cm (19") | 64cm (25") |
| Sunfire / White | LL LR2006 | LL LR3006 | LL LR3806 | LL LR4806 | LL LR7206 |
| Silver / White | LL LR2031 | LL LR3031 | LL LR3831 | LL LR4831 | LL LR7231 |
| Silver / Gold | LL LR2034 | LL LR3034 | LL LR3834 | LL LR4834 | LL LR7234 |
| Sunfire / Silver | LL LR2036 | LL LR3036 | LL LR3836 | LL LR4836 | LL LR7236 |
| Gold / White | LL LR2041 | LL LR3041 | LL LR3841 | LL LR4841 | LL LR7241 |
| Sunlite / Soft Silver | LL LR2028 | LL LR3028 | LL LR3828 | LL LR4828 | LL LR7228 |
| Diffuser, 2 Stops | LL LR2007 | LL LR3007 | LL LR3807 | LL LR4807 | LL LR7207 |

Specifications

| Collapsible Circular Diffusers | | | | |
|--------------------------------|------------|------------|------------|-------------|
| Open Sizes | 50cm (20") | 76cm (30") | 95cm (38") | 120cm (48") |
| Collapsed Sizes | 24cm (9") | 30cm (12") | 40cm (16") | 48cm (19") |
| Diffuser, 2 Stops | LL LR2007 | LL LR3007 | LL LR3807 | LL LR4807 |

Bottletops 5:1

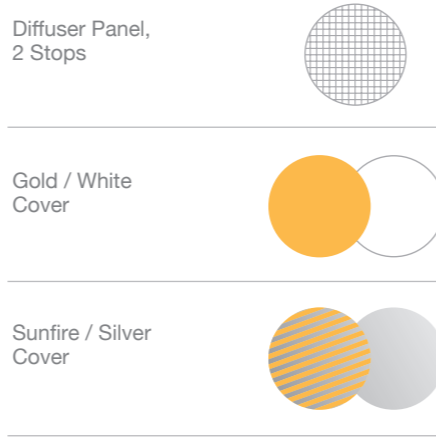
An innovation of the Lastolite By Manfrotto industry leading range of reflectors.

Simply slip the elasticated Gold / White or Sunfire / Silver cover over the reflector or diffuser to produce an instant change of colour.



| Specifications | | |
|---|------------|-----------|
| Bottletop Accessories | Size | Code |
| Diffuser with Gold / White & Sunfire / Silver cover | 50cm (20") | LL LR2096 |
| Diffuser with Gold / White & Sunfire / Silver cover | 75cm (30") | LL LR3096 |
| Diffuser with Gold / White & Sunfire / Silver cover | 95cm (38") | LL LR3896 |

- Features and Benefits**
- ▶ Sets up in seconds
 - ▶ No extra weight
 - ▶ Collapses to a third of its original size
 - ▶ Five surfaces in one bag
 - ▶ Taut professional finish



Circular and Panelite Reflector Accessories

Suitable for all reflectors and bottletops, the following accessories allow for versatile positioning.



Universal Bracket LL LA1100



Panelite Bracket LL LA1107

- Features and Benefits**
- ▶ Wind resistant clips for outdoor use
 - ▶ Adjustable in size

Specifications

| Accessories | Size | Code |
|-------------------|--------------------------|-----------|
| Universal Bracket | 50cm - 120cm (20" - 48") | LL LA1100 |
| Panelite Bracket | 95cm - 180cm (38" - 72") | LL LA1107 |

- Features and Benefits**
- ▶ Unique quality of light
 - ▶ Weighs just over 1kg (2.2lb)
 - ▶ Three reflective panels

Specifications

| Triflector MkII | Code |
|--------------------------------------|-------------|
| Triflector Mk II - Sunfire / Silver* | LL LR2933 |
| Triflector Mk II - Silver / White* | LL LR2933SW |

* Includes adjustable framework and 3 x reflector panels

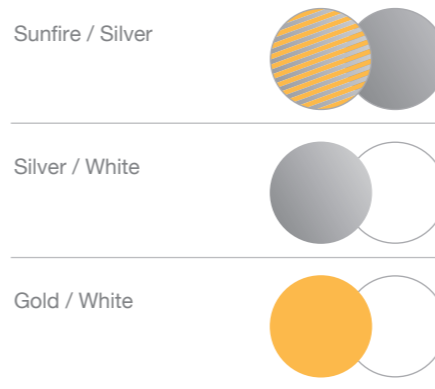
Triflector MkII Panels

| Triflector MkII Panels | Code |
|--|-----------|
| Set of three Gold / White reflector panels | LL LR2905 |
| Set of three Silver / White reflector panels | LL LR2903 |

Triflector MkII Kit

| Triflector MkII Kit | Code |
|--|-------------|
| Triflector MkII with Sunfire / Silver panels & stand kit** | LL LR2933SP |

** Includes adjustable framework, 3 x reflector panels and stand (LL LS1158 - see page 71)



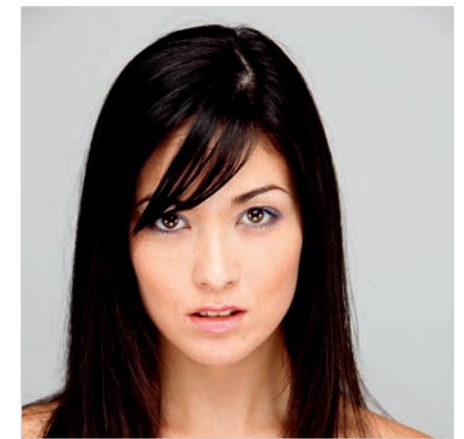
The Triflector is widely used in makeovers and fashion shots because the subject is given the Triflector's distinctive 'catch lights' to the eyes. The hinge mechanisms make all three panels individually adjustable to get light exactly where you need it. The panels each fold like our collapsible reflecting panels; the frame folds away and they all fit into a portable bag. Triflector MkII weighs only 1.2kg (2.6lb).



Triflector in use for Portrait Photography



Without Triflector



With Triflector



Using with Beautydish



Skylite Rapid

For the location photographer who needs lighting control in the most demanding situations. The Skylite Rapid's collapsible but rigid aluminium frame delivers reliable performance even in windy conditions, while the Skylite Rapid covers simply clip in place to provide maximum versatility.

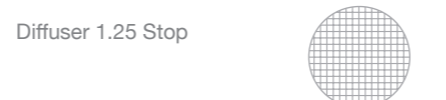
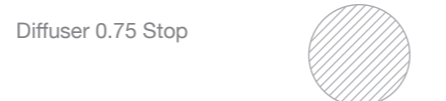
The Skylite Rapid frames, fabrics and accessories are all available separately, so you can mix and match as you choose.

For greater value choose our kit. The kit contains a Silver / White reflector, 1.25 stop diffuser, frame and rigid case.

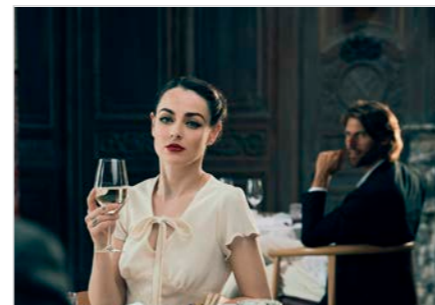
Note: All Skylite frames are compatible with the original Skylite covers and Skylite Rapid covers.



- Features and Benefits**
- ▶ Aluminium frame
 - ▶ Resistant to rust so ideal for outdoors
 - ▶ There is an elastic cord running through the aluminium, so it's impossible to lose parts or leave anything behind
 - ▶ Skylite Rapid covers clip easily into place for an impressively taut finish
 - ▶ Kits include rigid case



With negative fill



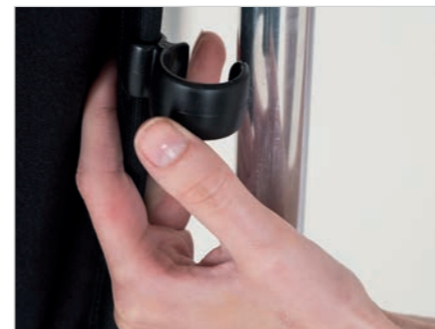
With no negative fill



Skylite Rapid Midi Kit LL LR81544R



Skylite Rapid Frame



Clip on covers for rapid assembly



Skylite Rapid Frame Extra Large to create negative fill LL LR833

Specifications

| Skylite Rapid Kits | Silver / White Reflector | 1.25 Stop Diffuser | Frame | Rigid Case | Code |
|-------------------------------|--------------------------|--------------------|-------|------------|--------------|
| Skylite Rapid Small Kit | 1 | 1 | 1 | 1 | LL LR81143RC |
| Skylite Rapid Medium Kit | 1 | 1 | 1 | 1 | LL LR81243RC |
| Skylite Rapid Midi Kit | 1 | 1 | 1 | 1 | LL LR81544R |
| Skylite Rapid Large Kit | 1 | 1 | 1 | 1 | LL LR82243RC |
| Skylite Rapid Extra Large Kit | | 1 | 1 | 1 | LL LR83344R |

Skylite Rapid Frames

| Skylite Rapid Frames | Weight | Size | Code |
|---------------------------------|---------------|---------------------------|----------|
| Skylite Rapid Frame Small | 1.1kg (2.4lb) | 1.1m x 1.1m (3'6" x 3'6") | LL LR811 |
| Skylite Rapid Frame Medium | 1.6kg (3.5lb) | 1.1m x 2m (3'6" x 6'6") | LL LR812 |
| Skylite Rapid Frame Midi | 1.5kg (3.3lb) | 1.5m x 1.5m (5' x 5') | LL LR815 |
| Skylite Rapid Frame Large | 2.1kg (4.6lb) | 2m x 2m (6'6" x 6'6") | LL LR822 |
| Skylite Rapid Frame Extra Large | 3kg (6.6lb) | 3m x 3m (10' x 10') | LL LR833 |

** This table is not to size. Only to show you the columns and rows required

Skylite Rapid Covers

| Skylite Rapid Covers | Small Covers 1.1m x 1.1m (3'6" x 3'6") Code | Medium Covers 1.1m x 2m (3'6" x 6'6") Code | Midi Covers 1.5m x 1.5m (5' x 5') Code | Large Covers 2m x 2m (6'6" x 6'6") Code | Extra Large Covers 3m x 3m (10' x 10') Code |
|----------------------|--|---|---|--|--|
| Black / White | LL LR81121R | LL LR81221R | LL LR81521R | LL LR82221R | |
| Sunfire / White | LL LR81106R | LL LR81206R | | LL LR82206R | |
| Silver / White | LL LR81131R | LL LR81231R | LL LR81531R | LL LR82231R | |
| 1.25 Stop Diffuser | LL LR81107R | LL LR81207R | LL LR81507R | LL LR82207R | LL LR83307R |
| 0.75 Stop Diffuser | LL LR81101R | LL LR81201R | LL LR81501R | LL LR82201R | LL LR83301R |
| Black Velour | LL LR81102R | LL LR81202R | | LL LR82202R | LL LR83302 |

Skylite Rapid DoPchoice 60 Degree SNAPGRID®

The Skylite Rapid DoPchoice 60 Degree SNAPGRID® is available in two sizes; 2x2m (6.5x6.5ft) and 3x3m (9.8x9.8ft) and compatible with the equivalent Skylite Rapid frame size.

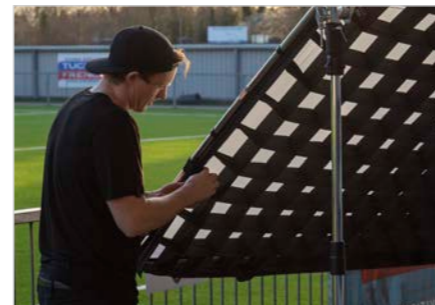
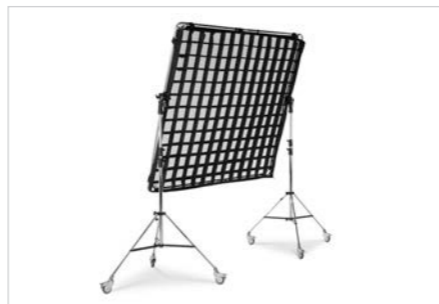
The 60-degree fabric grid design provides the user precise control over the spread of light from their Skylite Rapid diffuser panel. Ideal for professional content creators wanting to create a controlled dramatic look with a strong directional light and offering minimal spill outside of the subject area, this essential light control tool is the go-to accessory when crafting light on set.

The grid has been designed and created in collaboration with DoPchoice a leading cinema lighting control accessory manufacturer and features their patented instant set-up SNAPFRAMES, which unlike other grids ensure an instant set up and sag-free construction. It attaches to the front of a frame in seconds, using convenient elastic corner straps and secure hook and loop fastenings preventing twisted sections and ensuring even distribution of the fabric grid. Built using strong, hardwearing technical fabric and precisely manufactured to the highest quality standards, these tools are built to be used by even the most demanding professionals and created to last.

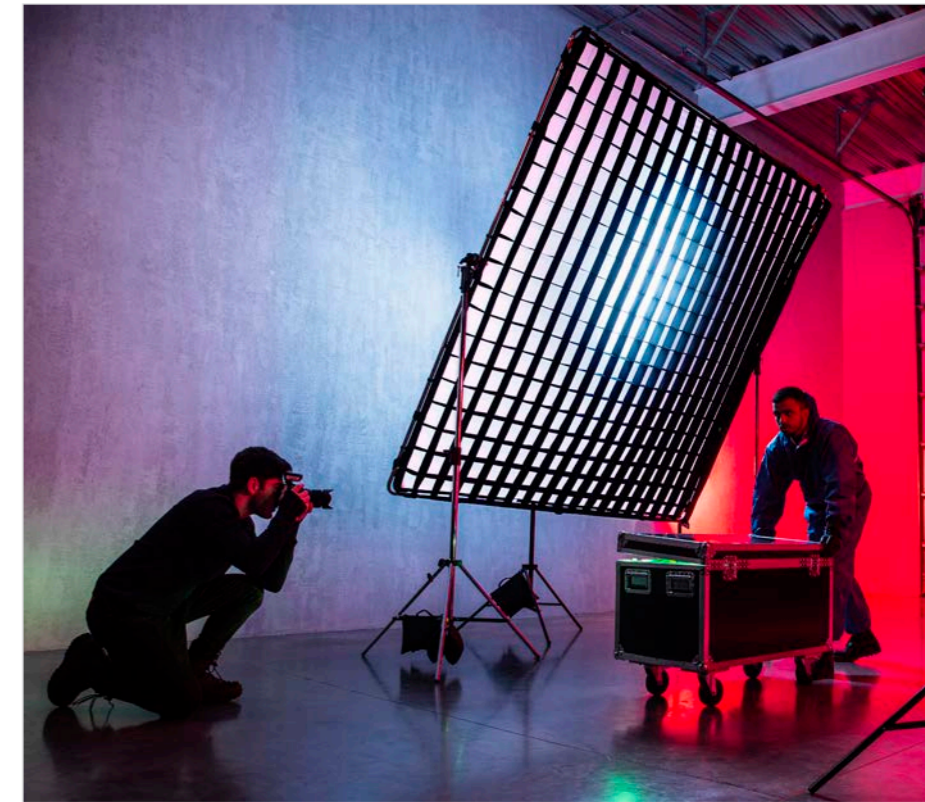
In keeping with the ethos of the rest of the Skylite Rapid range, these grids are ultra-portable and when it's time to wrap up the shoot the grid simply folds down into the included compact carry case ready for the next shoot with a packed size of just 84x24cm (33x9.4in.).

It's ultra-lightweight too, just 2.2kg (4.8lbs) for the 2x2m and 3.6kg (7.93lbs) for the 3x3m making it an ideal accessory for busy professionals wanting to keep the weight of their kit down to a minimum.

| Features and Benefits |
|---|
| ▶ Aluminium frame |
| ▶ Dedicated grid for the Skylite Rapid & Pro Scrim |
| ▶ Rapid attachment and break-down |
| ▶ DoPchoice's patented SNAPGRID® technology |
| ▶ Folds down ultra-compact into the included carry case |



| Specifications | | | |
|-------------------------------|--------|---------|-----------------|
| Snap Grid | Weight | Size | Code |
| SkyRap DoPchoice SNAPGRID 2x2 | 2.2kg | 2m x 2m | LL LR60SNPGRD22 |
| SkyRap DoPchoice SNAPGRID 3x3 | 3.6kg | 3m x 3m | LL LR60SNPGRD33 |



Skylite Rapid Accessories



Skylite Rapid Crossbar Handle LL LA8449



Skylite's special griphead allows it to be fixed to stands and tilted as required. LL LA8446



Skylite Rigid Cases

| Skylite Rapid Accessories | Code |
|--------------------------------|---------------|
| Aluminium Frame Support Kit | LL LA8450 |
| Skylite Rapid Griphead | LL LA8446 |
| Skylite Rapid Crossbar Handle | LL LA8449 |
| Rigid Case 78cm x 19cm x 14cm | LL LRCASE775 |
| Rigid Case 103cm x 19cm x 14cm | LL LRCASE1025 |
| Skylite Rapid Bag | LL LA8444 |



Skylite Rapid Bag LL LA8444

| Features and Benefits |
|---|
| ▶ Colour correction, pre and post capture |
| ▶ Exposure control, pre and post capture |
| ▶ Accurate colour rendition |
| ▶ Collapsible, durable and cleanable |
| ▶ Double sided |
| ▶ Unique focusing target |
| ▶ For use with digital or film photography |
| ▶ Collapses to a third of its original size |

| EzyBalance | Code |
|----------------|-----------|
| 30cm (12") 18% | LL LR1250 |
| 50cm (20") 18% | LL LR2050 |
| 75cm (30") 18% | LL LR3050 |

Aluminium Frame Support Kit

The Aluminium Frame Support Kit is a versatile accessory compatible with the Lastolite By Manfrotto Skylite panels, Panoramic backgrounds, EzyFrame backgrounds and the StudioLink Chroma Key background system. This useful adjustable support can be used in three different ways: as a handle for the smaller Skylite panels, a support leg to support a Skylite, Panoramic, EzyFrame or StudioLink in the vertical position and to support a Skylite on the ground, creating a useful directional fill light.

| Skylite Rapid Accessories | Code |
|-----------------------------|-----------|
| Aluminium Frame Support Kit | LL LA8450 |



| Specifications | |
|----------------|-----------|
| XpoBalance | |
| 38cm (15") | LL LR1558 |

White Balance and Exposure

Getting accurate colours and exposure is made easier with the Lastolite By Manfrotto range of EzyBalance and XpoBalance products. Simply take a test shot of your subject holding the product each time you shoot in a new lighting situation. You can then use a custom white balance on your camera to take a reading off the Balance card for perfect white balance and exposure.

Alternatively, you can use the eyedropper tool in one of the many post-processing applications to set your correct white balance, then copy and paste to the rest of your batch of images.

With different grey options plus black and white patches, the XpoBalance allows you to set even more colour tint options for a range of creative results.

PATENTED EzyBalance

The EzyBalance 18% is a handy double sided 'pop up' grey/white card which simplifies the complex technical issues surrounding exposure and colour correction when working in different lighting conditions.

A unique focusing target enables the camera to focus on the card and take the necessary readings. A waterproof version is also available for scuba divers.



EzyBalance 18%

PATENTED XpoBalance

The XpoBalance works in a similar way to the EzyBalance but has the added advantage of three different grey surfaces on one side and a black, white and 18% grey surface on the other side, collectively offering a range of white balance, exposure, colour correction and bracketing adjustment options.



XpoBalance LL LR1558



Ezybox Hotshoe

The Ezybox Hotshoe converts your battery operated flash gun from a harsh directional light into a much softer diffused light and is available in three sizes - 38cm x 38cm (15" x 15"), 54cm x 54cm (21" x 21") and 76cm x 76cm (30" x 30"). The Ezybox hotshoe folds flat for easy storage and can be assembled in a matter of minutes. The inner and outer diffusers, which when used together, produces a two stop light loss. **The Ezybox Hotshoe Softbox is not designed for use with studio flash heads.**

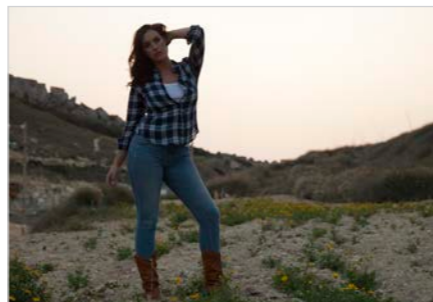


Removable inner + outer diffusers

| Specifications | | | | | | |
|------------------------|--------------|--------------|------------|------------|--------------|-----------|
| Ezybox Hotshoe | A | B | C | D | E | Code |
| Ezybox Hotshoe Small* | 46cm (18") | 46cm (18") | 38cm (15") | 38cm (15") | 35cm (14") | LL LS2438 |
| Ezybox Hotshoe Medium* | 63cm (25") | 63cm (25") | 54cm (21") | 54cm (21") | 45cm (17.5") | LL LS2462 |
| Ezybox Hotshoe Large* | 90cm (35.5") | 90cm (35.5") | 76cm (30") | 76cm (30") | 77cm (30") | LL LS2480 |

*Includes Ezybox Hotshoe Bracket

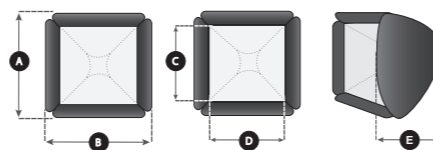
- Features and Benefits**
- ▶ Softbox for Hotshoe flash
 - ▶ Adjustable bracket for different sized flash guns
 - ▶ Operates as a coldshoe
 - ▶ Folds flat
 - ▶ Assembled in a few minutes
 - ▶ Ideal for location use



Without Ezybox Hotshoe



With Ezybox Hotshoe



Ezybox Hotshoe Bracket LL LS2414



Ezybox Hotshoe Bracket fit to Ezybox Hotshoe Softbox

- Features and Benefits**
- ▶ Simple slide on elasticated fitting
 - ▶ No permanent fixing system attached to your flash gun
 - ▶ Folds flat for easy storage
 - ▶ 1-stop light loss

Specifications

| Ezybox Micro | Size | Code |
|--------------|-------------------------------|-----------|
| Ezybox Micro | W: 20cm x H: 14cm (8" X 5.5") | LL LS2211 |

* Not compatible with hammerhead style flashguns



Ezybox Hotshoe Accessories



Tiltthead Spigot LL LA2401



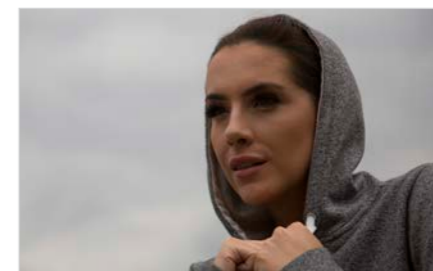
Fabric Grid for Ezybox Hotshoe Softboxes LL LS2462 LL LS2480

Specifications

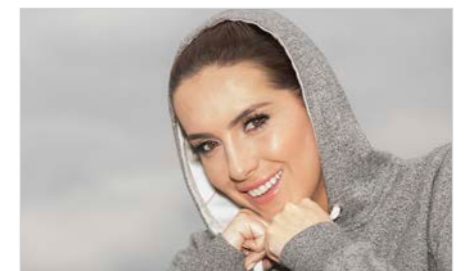
| Ezybox Hotshoe Accessories | Code |
|--|-----------|
| Fabric Grid for LL LS2462 Ezybox Hotshoe Medium 54cm (21") | LL LS2962 |
| Fabric Grid for LL LS2480 Ezybox Hotshoe Large 76cm (30") | LL LS2980 |
| Ezybox Hotshoe Bracket (with standard flash mount) | LL LS2414 |
| Tiltthead Spigot | LL LA2401 |

Ezybox Micro

A simple collapsible softbox which fits direct to your flashgun. The Ezybox Micro slides directly on to your gun and is secured in place thanks to an innovative internal frame structure and elasticated collar which requires no additional fixing mechanism to be permanently attached to your flash. Fits neatly in your camera bag - a great 'always with you' accessory.



Without Ezybox Micro



With Ezybox Micro

Ezybox Pro PATENT PENDING

Ezybox Pro is a range of unique fast fit softboxes which can be used with traditional studio flash, battery operated flashguns, the Elinchrom Ranger Quadra RX range and Profoto A1 and B2. The softboxes feature a unique softbox frame which fits directly to our Ezybox Pro Strip and Ezybox Pro Octa softboxes. Depending on your chosen light source, a choice of adapters can then be used to link the light source to the softbox frame. So, rather than buying different softboxes for every light you own the Ezybox Pro now offers a true 'one system fits all' solution.

- Features and Benefits**
- ▶ Multi light system bracket
 - ▶ Compatible with all Ezybox Pro softboxes
 - ▶ Also works with umbrellas when using flashguns
 - ▶ Speedlight Bracket ships with Tilthead Spigot (LL LA2401) and two way trigger cable



Ezybox Pro Speedlight bracket with softbox frame



With flashguns and receiver



With studio flash



With Elinchrom Quadra



With flashguns and umbrella



With Profoto A1



With Profoto B2

Ezybox Pro - Configuration

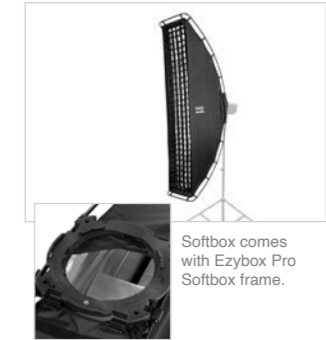
Step 1

Select softbox shape



Softbox comes with Ezybox Pro Softbox frame.

| Ezybox Pro | Code |
|---------------|------------|
| Octa - Medium | LL LS2720P |
| Octa - Large | LL LS2721P |



Softbox comes with Ezybox Pro Softbox frame.

| Ezybox Pro | Code |
|--------------------|-----------|
| Strip 150cm x 30cm | LL LS3030 |

Step 2

Select your light source



For studio flash, you will require a compatible Ezybox Pro Speedring for your system.



For battery powered flashguns and portable flash (such as Elinchrom Quadra and Profoto A1 / B2) you will require the Ezybox Pro Portable Flash Bracket.

Step 3

Select the correct connector



| Ezybox Pro Speedring | Code |
|----------------------|------------|
| Bron | LL LS2350N |
| Bowens | LL LS2351N |
| Elinchrom | LL LS2352N |
| Balcar | LL LS2353N |
| Profoto | LL LS2354N |



| Ezybox Pro Portable Flash Bracket** | Code |
|-------------------------------------|-----------|
| | LL LS2701 |

**Includes 2 way 3.5 jack, PC sync cable and tilthead spigot LL LS2401

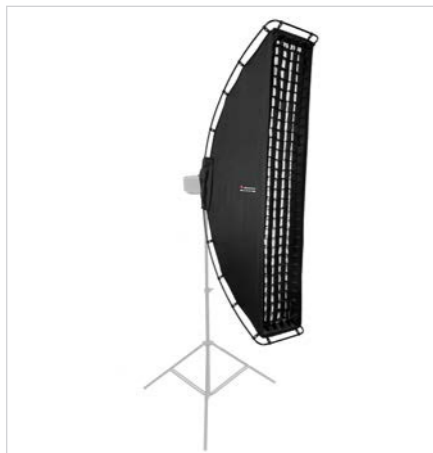


Ezybox Pro Strip PATENT PENDING

The Ezybox Pro is the world's first softbox designed to fit battery flash, portable flash and studio flash from all the major flash manufacturers. Designed to meet the demands of modern day photographers who shoot with different types of flash, the Ezybox Pro enables them to carry one softbox, which is compatible with all their flash units and simply switch between different flash using simple connectors, without adjusting the softbox itself.

The Ezybox Pro Strip features a unique patent pending design, boasting an ultra-fast assembly time. The Ezybox Pro Strip is built around an innovative collapsible RapidExoFrame, which remains attached at all times to the unique Ezybox frame, the interface for the many different compatible flash units. The softbox fabric also remains attached to the RapidExoFrame and simply slides along the structure once assembled and clips into position at both ends. The 25 cm x 150 cm softbox (gridded area) offers a 6:1 strip proportion, and includes an inner and outer diffuser which when used together offers a 2 stop light loss. The softbox can be used in the vertical and horizontal position. For added control and creativity, the Ezybox Pro Strip also comes with a fabric grid, which simply fits inside the recessed outer edge.

Rapid assembly, multiple flash unit compatibility and all the benefits of strip box style lighting.



| Specifications | | | | | | | | |
|------------------|-------------|------------|-------------|------------|---------------|--------------|------------|-----------|
| Ezybox Pro Strip | A | B | C | D | E | F | G | Code |
| Ezybox Pro Strip | 150cm (59") | 25cm (10") | 147cm (58") | 25cm (10") | 162.5cm (64") | 34.5cm (14") | 67cm (26") | LL LS3030 |

Dimensions of product when closed in bag: 42cm x 54cm x 11cm (17" x 21" x 4")

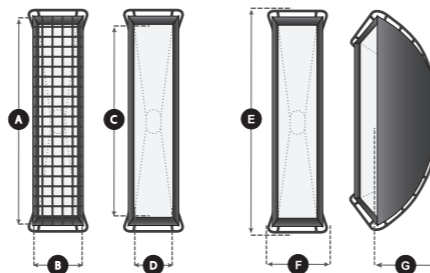
| Features and Benefits | |
|-----------------------|--|
| ▶ | Unique patent pending design |
| ▶ | Can be used with studio flash, battery operated flash guns, Elinchrom Quadra and Profoto A1/B2 |
| ▶ | Rapid assembly time |
| ▶ | Includes grid |



Shot without key light to show effect of Ezybox Pro Strip

| Connections | Code |
|--|------------|
| Ezybox Pro Speedlight Bracket* | LL LS2701 |
| Elinchrom Quadra/Profoto Spigot | LL LS2705 |
| Ezybox Pro Speedring Plate (Bron) | LL LS2350N |
| Ezybox Pro Speedring Plate (Bowens) | LL LS2351N |
| Ezybox Pro Speedring Plate (Elinchrom) | LL LS2352N |
| Ezybox Pro Speedring Plate (Balcar) | LL LS2353N |
| Ezybox Pro Speedring Plate (Profoto) | LL LS2354N |

*Includes Umbrella Holder, Tilthead Spigot (LL LA2401) and two way trigger cable



Ezybox Pro - Octa

The Ezybox Pro is the world's first softbox designed to fit battery flash, portable flash and studio flash from all the major flash manufacturers. Designed to meet the demands of modern day photographers who shoot with different types of flash, the Ezybox Pro enables them to carry one softbox, which is compatible with all their flash units and simply switch between different flash using simple connectors, without adjusting the softbox itself.

The Ezybox Pro Octa softbox is our lightest Octa ever. Fast to assemble, the softbox simply pops open and is secured using four support rods and our unique Ezybox Pro softbox frame. The Ezybox Pro Octa is available in two sizes - medium and large (see below for measurements) and feature inner and outer diffusers which when used together, produces a 2 stop light loss and simply requires the correct connection kit depending on your chosen light source(s).

Save time and money with the Ezybox Pro Octa softbox.



| Features and Benefits | |
|-----------------------|---|
| ▶ | Unique world's first design |
| ▶ | Can be used with studio flash, battery operated flashguns, Elinchrom Quadra and Profoto A1 and B2 |
| ▶ | Extremely lightweight and sturdy |
| ▶ | Optional grids available |
| ▶ | Octagonal catchlights in the eyes |



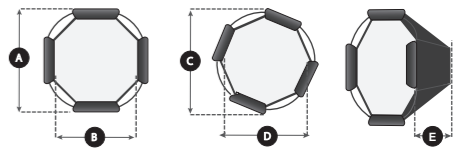
Frame included with softbox



| Fabric Grids | Code |
|--|-----------|
| Fabric grids for Ezybox Pro Octa- Medium | LL LS2953 |
| Fabric grids for Ezybox Pro Octa- Large | LL LS2954 |

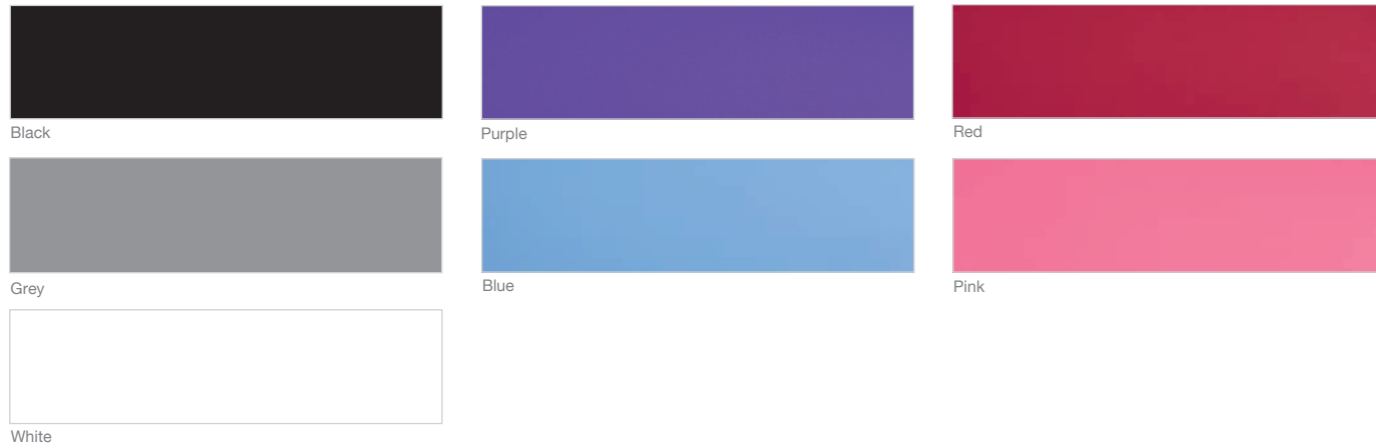
| Connections | Code |
|--|------------|
| Ezybox Pro Speedlight Bracket* | LL LS2701 |
| Elinchrom Quadra/Profoto Spigot | LL LS2705 |
| Ezybox Pro Speedring Plate (Bron) | LL LS2350N |
| Ezybox Pro Speedring Plate (Bowens) | LL LS2351N |
| Ezybox Pro Speedring Plate (Elinchrom) | LL LS2352N |
| Ezybox Pro Speedring Plate (Balcar) | LL LS2353N |
| Ezybox Pro Speedring Plate (Profoto) | LL LS2354N |

*Includes Umbrella Holder, Tilthead Spigot (LL LA2401) and two way trigger cable



| Specifications | | | | | | |
|--------------------------|-------------|--------------|-------------|-------------|--------------|------------|
| Ezybox Pro Octa | A | B | C | D | E | Code |
| Ezybox Pro - Octa Medium | 97cm (38") | 80cm (31.5") | 99cm (39") | 88cm (35") | 52cm (20.5") | LL LS2720P |
| Ezybox Pro - Octa Large | 117cm (46") | 102cm (40") | 120cm (47") | 112cm (44") | 66cm (26") | LL LS2721P |

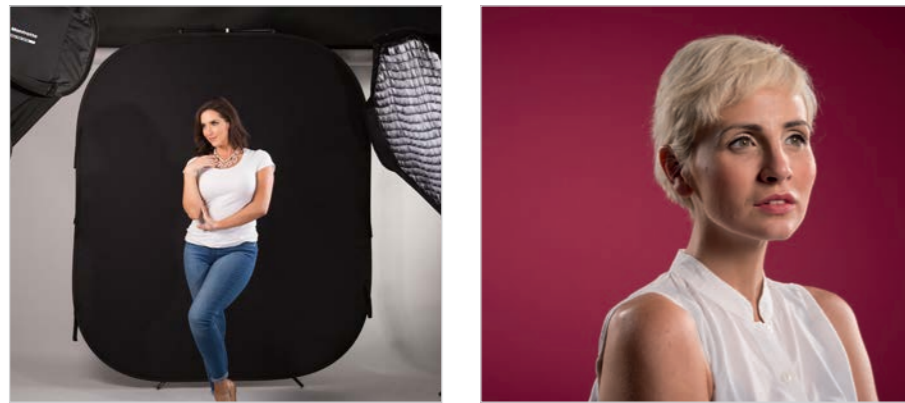
Plain Background Swatches



Plain Collapsible Backgrounds

A range of collapsible, reversible, plain coloured backgrounds. In addition to the standard black, white and grey we now have a range of punchy vibrant colours for a more modern look to your portraits.

A simple solution for flat plain coloured backgrounds, a great way to get the seamless paper effect but in a collapsible portable format!



Features and Benefits

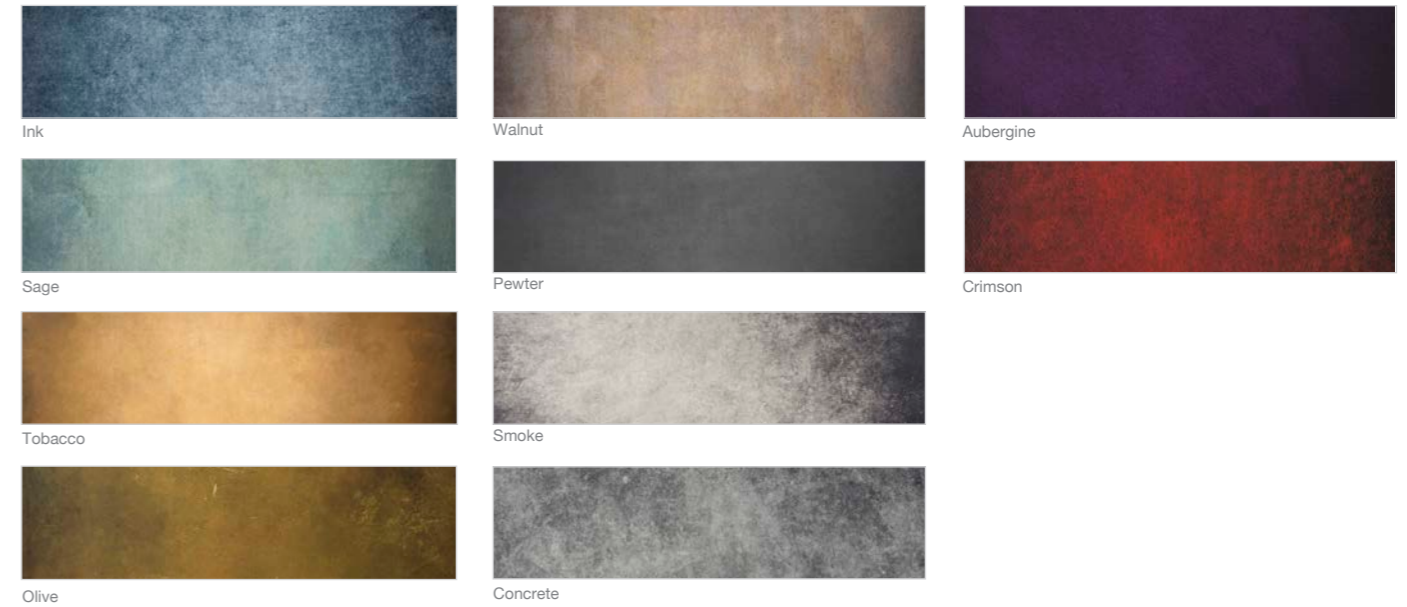
- ▶ Crease resistant
- ▶ Single colours
- ▶ Reversible
- ▶ Collapsible
- ▶ Ideal for passport, ID and corporate photos



Specifications

| Plain Collapsible Backgrounds | Size | Code |
|-------------------------------|------------------------|-----------|
| Blue / Pink | 1.8m x 2.15m (6' x 7') | LL LB6751 |
| Red / Purple | 1.8m x 2.15m (6' x 7') | LL LB6752 |
| Black / White | 1.5m x 1.8m (5' x 6') | LL LC5621 |
| Black / White | 1.8m x 2.15m (6' x 7') | LL LB5921 |
| Black / White | 1.8m x 2.75m (6' x 9') | LL LB6921 |
| Black / White with train | 1.8m x 2.15m (6' x 7') | LL LB6701 |
| Black / Mid Grey | 1.5m x 1.8m (5' x 6') | LL LB56GB |
| Black / Mid Grey | 1.8m x 2.15m (6' x 7') | LL LB67GB |
| White / Mid Grey | 1.5m x 1.8m (5' x 6') | LL LB56GW |
| White / Mid Grey | 1.8m x 2.15m (6' x 7') | LL LB67GW |

Vintage Collapsible Background Swatches



Features and Benefits

- ▶ Timeless hand painted look
- ▶ Subtle textured surface
- ▶ Reversible
- ▶ 6 different colour tones
- ▶ Collapses to a third of its original size

Specifications

| Vintage Collapsible Backgrounds | 1.5 x 2.1m (5' x 7') |
|---------------------------------|----------------------|
| Tobacco/Olive | LL LB5705 |
| Ink/Sage | LL LB5720 |
| Walnut/Pewter | LL LB5721 |
| Aubergine/Crimson | LL LB5722 |
| Smoke/Concrete | LL LB5745 |
| Joe McNally Ironworks | LL LB5750JM |

Some camera sensors may interpret the colours used on our printed backgrounds differently.

Vintage Collapsible Backgrounds

The vintage collapsible backgrounds offer a range of versatile subtly textured surfaces, great for portraits, fashion and product photography. These 1.5 x 2.1m (5' x 7') reversible backgrounds provide a very fashionable, timeless hand painted look that subtly complements the chosen subject. Two great backgrounds in one with a collapsible pop up construction that provides today's image-makers with a truly portable solution that can easily be transported.



Concrete LL LB5745



Aubergine LL LB5722

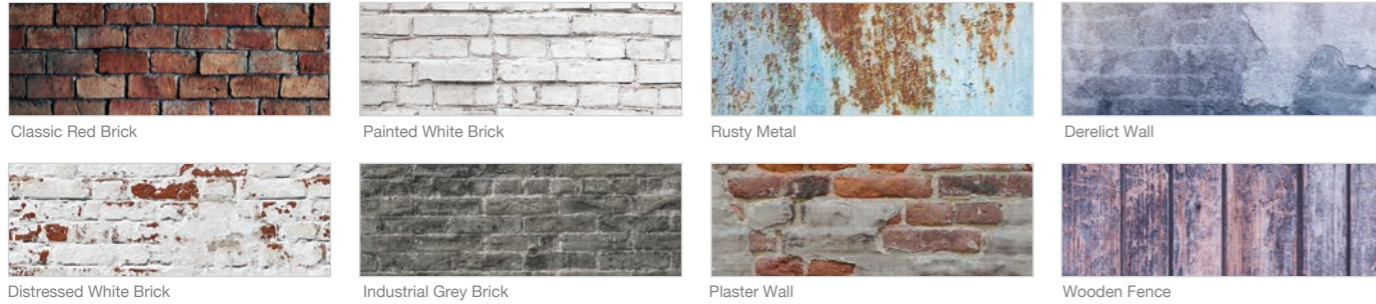


Tobacco LL LB5705



Ink LL LB5720

Urban Collapsible Backgrounds Swatches



Urban Collapsible Backgrounds

The urban collapsible backgrounds allow you to create the outdoor look in an instant whether you're in the studio or a client's home. Each double sided background has unique urban feel and can quickly add a new dimension to your portrait sittings. No longer will you have to find locations or be controlled by the weather.

- Features and Benefits**
- ▶ 4 different surfaces
 - ▶ Reversible
 - ▶ Create the location effect anywhere
 - ▶ Collapsible to a third of its original size



Painted White Brick LL LB5707

| Specifications | | |
|---|------------|-----------|
| Urban Collapsible Backgrounds | Size | Code |
| Classic Red Brick / Distressed White Brick | 1.5 x 2.1m | LL LB5706 |
| Painted White Brick / Industrial Grey Brick | 1.5 x 2.1m | LL LB5707 |
| Rusty Metal / Plaster Wall | 1.5 x 2.1m | LL LB5713 |
| Derelict Wall / Wooden Fence | 1.5 x 2.1m | LL LB5715 |

Some camera sensors may interpret the colours used on our printed backgrounds differently.



Distressed White Brick LL LB5706

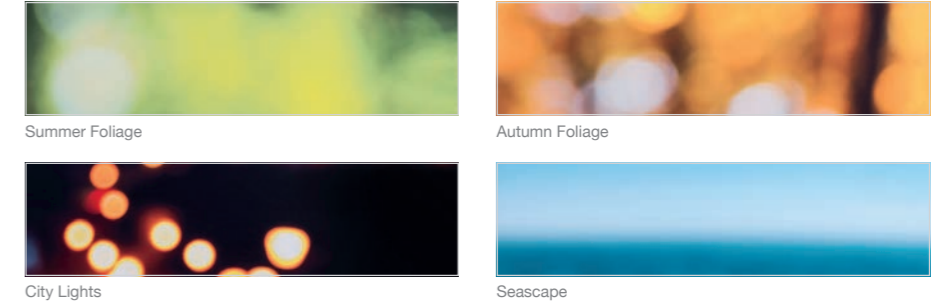


Classic Red Brick LL LB5706



Industrial Grey Brick LL LB5707

Out of Focus Background Swatches



Out of Focus Backgrounds

Want to create images with beautiful 'bokeh' and shoot at f8? With the Lastolite 'Out of Focus' backgrounds you can create that wonderful 'drop-focus' look whilst still shooting at the sharpest of apertures. Ideal for professionals or amateurs alike, these double sided 1.2m x 1.5m (4' x 5') collapsible backgrounds feature 'out of focus' scenes of a variety of locations. With Summer Foliage/City Lights or Autumn Foliage/Seascape to choose from there's a scene for any occasion. The backgrounds are easily transportable, folding to a third of their original size and are perfect for up to half length portraits.

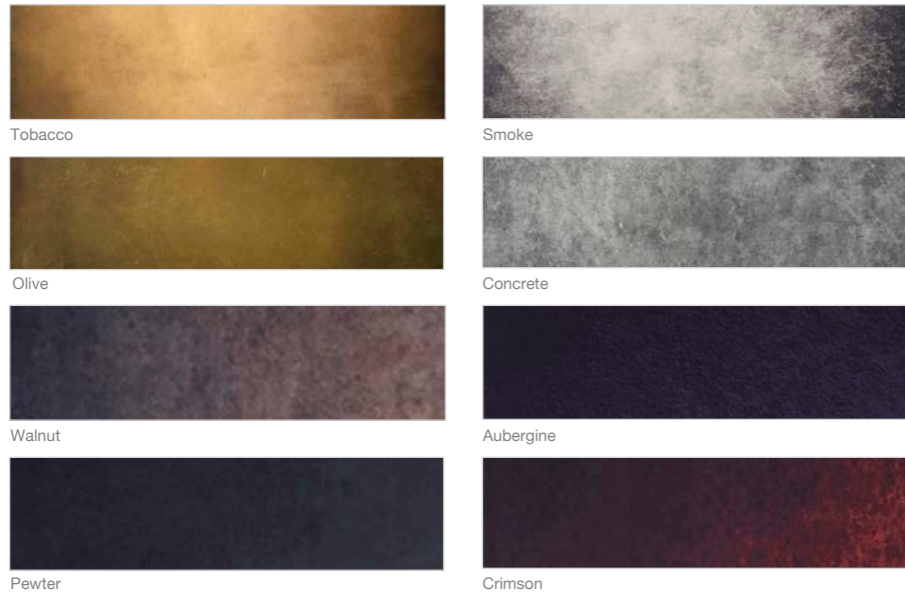
- Features and Benefits**
- ▶ Four different reversible surfaces
 - ▶ 'Drop focus' look
 - ▶ Create the location effect anywhere
 - ▶ Collapsible to a third of its original size



| Specifications | | |
|------------------------------|-----------------------|-----------|
| Out of Focus Backgrounds | Size | Code |
| Summer Foliage / City Lights | 1.2m x 1.5m (4' x 5') | LL LB5730 |
| Autumn Foliage / Seascape | 1.2m x 1.5m (4' x 5') | LL LB5731 |

Some camera sensors may interpret the colours used on our printed backgrounds differently.

EzyFrame Vintage Swatches



EzyFrame Vintage

The EzyFrame Vintage Background 2 x 2.3m (6'7" x 7'5") is a large format collapsible background concept offering a much larger shooting area for our highly successful vintage textured background surfaces, currently available as 1.5 x 2.1m (5' x 7') collapsible 'pop-up' style backgrounds. The extra width and height combined with the squarer format offers a substantially increased surface area allowing the photographer to pose multiple subjects and the use of props. Ideal for family portraits, more animated action poses, fashion and commercial shoots.

The EzyFrame Vintage Background features the tried and tested aluminium frame and clip on cover design used on our highly successful Skylite panels, Panoramic backgrounds and the newly launched StudioLink Chroma Key solutions. Assembled in a matter of minutes the EzyFrame Vintage background and cover packs down into a small rigid carry case measuring only 103cm x 19cm x 14cm making it extremely portable.

| Features and Benefits | |
|-----------------------|--|
| ▶ | Aluminium frame |
| ▶ | Highly portable and offers large background coverage |
| ▶ | EzyFrame covers clip easily onto the frame for an impressively taut finish |
| ▶ | Interchangeable with other EzyFrame covers |



| Specifications | |
|----------------------|-----------|
| EzyFrame Backgrounds | |
| Tobacco | LL LB7926 |
| Olive | LL LB7924 |
| Smoke | LL LB7928 |
| Concrete | LL LB7930 |
| Ink | LL LB7922 |
| Sage | LL LB7932 |
| Walnut | LL LB7934 |
| Pewter | LL LB7936 |
| Aubergine | LL LB7938 |
| Crimson | LL LB7940 |
| EzyFrame Cover | |
| Tobacco Cover | LL LB7927 |
| Olive Cover | LL LB7925 |
| Smoke Cover | LL LB7929 |
| Concrete Cover | LL LB7931 |
| Ink Cover | LL LB7923 |
| Sage Cover | LL LB7933 |
| Walnut Cover | LL LB7935 |
| Pewter Cover | LL LB7937 |
| Aubergine Cover | LL LB7939 |
| Crimson Cover | LL LB7941 |



| EzyFrame Accessories | |
|--------------------------------|---------------|
| | Code |
| Aluminium Frame Support Kit | LL LA8450 |
| Skylite Rapid Griphead | LL LA8446 |
| Rigid Case 78cm x 19cm x 14cm | LL LRCASE775 |
| Rigid Case 103cm x 19cm x 14cm | LL LRCASE1025 |



Skylite's special griphead allows it to be fixed to stands and tilted as required. LL LA8446



Aluminium Frame Support Kit LL LA8450

PATENTED HiLite Backgrounds

The HiLite backgrounds range allows the photographer to work in a way that was extremely difficult to achieve in the past, 'high key' photography on location and in restrictive spaces. By rear lighting the white background itself there is no longer a need to use a background light behind the subject. Furthermore, because the background is actually illuminated it means the subject can stand virtually right in front of it without casting a shadow. The HiLite backgrounds also works as a large rear softbox and illuminates the subject as well, meaning you can use just one other flash head to light the subject from the front. What's more, the whole thing is collapsible.

Features and Benefits

- ▶ Available in four sizes 1m x 1.4m (3'6" x 4'6"), 1.5m x 2.15m (5' x 7'), 1.8m x 2.15m (6' x 7') and 2.15m x 2.5m (7' x 8')
- ▶ Can be rotated and used on its short or long edge
- ▶ An optional 'wipe clean' vinyl train is also available that attaches to either edge for full length work
- ▶ Can be suspended on our LL LA1108 background support system
- ▶ Can even be used as a very large softbox
- ▶ Free standing



Specifications

| HiLite Background | Code |
|---------------------------------------|-----------|
| HiLite 1m x 1.4m (3'6" x 4'6") | LL LB8990 |
| HiLite 1.5m x 2.15m (5' x 7') | LL LB8857 |
| HiLite 1.8m x 2.15m (6' x 7') | LL LB8867 |
| HiLite 2.15m x 2.5m (7' x 8') | LL LB8878 |
| Cleanable Vinyl Train | Code |
| For the 1.5m x 2.15m (5' x 7') HiLite | LL LB8858 |
| For the 1.8m x 2.15m (6' x 7') HiLite | LL LB8868 |
| For the 2.15m x 2.5m (7' x 8') HiLite | LL LB8879 |



“The HiLite is probably the best investment you will ever make as a photographer who uses flash. Why? There is not any other flash based product on the market that has so many uses to create so many styles and in any location. From a background to a window light, the HiLite allows you to shoot big light anywhere, producing a window light quality or a portable pure white background.”

Mark Cleghorn, Photographer & Director of The Photographer Academy.



Getting creative with the HiLite by putting the model inside, there's so much you can do with a HiLite.



The HiLite is not only a background. It can be used as a huge full length softbox.



The HiLite is so simple to set up. Just attach a short rod to each corner and it's ready to shoot.

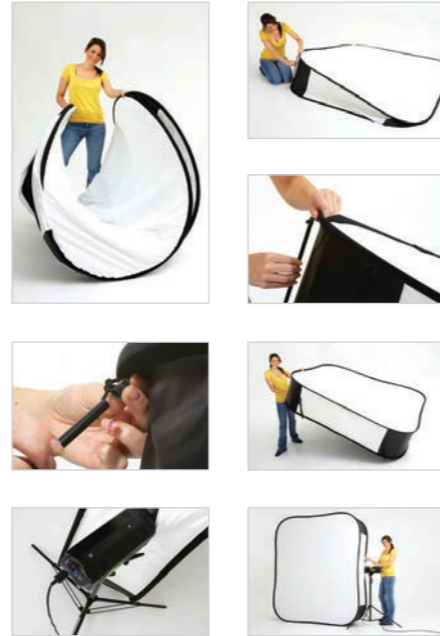
HiLite Accessories



LL LB8878



LL LB8990



| Features and Benefits | |
|-----------------------|---|
| ▶ | Designed for using the HiLite as a softbox |
| ▶ | Compatible with the 1.8m x 2.15m (6' x 7') version only |
| ▶ | 3 different accessories |
| ▶ | Unlimited creative potential |

| Specifications | |
|--------------------------|-----------|
| HiLite Accessories | Code |
| HiLite Window Voile | LL LB8969 |
| HiLite Shaper | LL LB8968 |
| HiLite Shapers and Masks | LL LB8967 |

Originally launched as an illuminated high key background the HiLite can also be used as an incredibly large full-length softbox, offering beautiful soft light. To offer ultimate control and creativity as a softbox we offer three accessories:

- HiLite Window Voile - turns the HiLite into a huge head to toe window light, allowing photographers to create the illusion that the subject is looking out through a large window or doorway.
- HiLite Shaper – a 86cm wide opaque black panel that masks the light allowing the photographer to create a single strip of light or split the light into two strips. Each offers a different lighting effect allowing the photographer to be as creative as they wish.
- HiLite Shapers and Masks - The shapers work as above however in this set there are three of them which allows the photographer maximum control. This set also includes three masks, which attaches to the top and the sides of the HiLite to ensure no light is spilled giving the photographer complete control.

All accessories are compatible with the 1.8m x 2.15m (6' x 7') HiLite only.



LL LB8969



HiLite Bottletop Swatches



Super Black



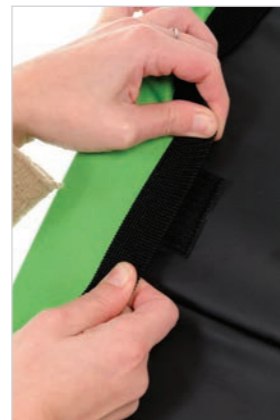
Grey



Chroma Key Green

HiLite Bottletops

The bottletop background covers with a train now make the HiLite product range even more versatile. These backgrounds stretch over the HiLite and allow the photographer to quickly switch from a high key to a low or mid key environment. When using the covers the HiLite should not be illuminated from the rear.



| Features and Benefits | |
|-----------------------|--|
| ▶ | Switch from high key to mid or low key in an instant |
| ▶ | Designed to fit the 1.8m x 2.15m (6' x 7') HiLite |
| ▶ | Available in three colours |

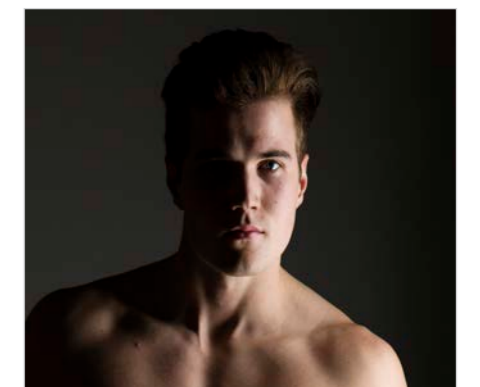
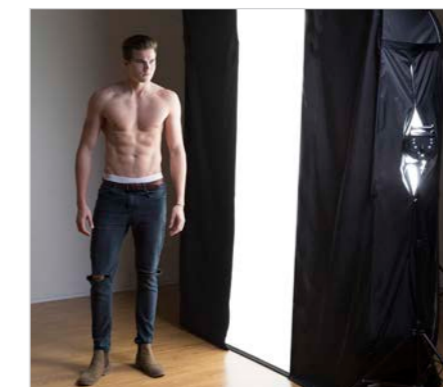
| Specifications | |
|---|-----------|
| HiLite Bottletops | Code |
| Super Black 1.8m x 2.15m (6' x 7') | LL LB8803 |
| Grey 1.8m x 2.15m (6' x 7') | LL LB8870 |
| Chroma Key Green 1.8m x 2.15m (6' x 7') | LL LB8881 |



LL LB8968



LL LB8967



Panoramic Background Swatches



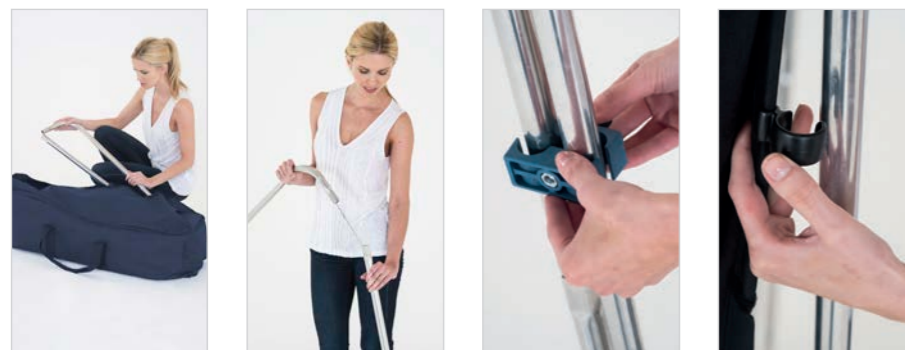
Panoramic Background

The Panoramic background is one of our widest, crease free textile surfaces. It features a collapsible three panel aluminium framework, creating a useful self-supporting wraparound structure. The fabric cover clips to the framework and is available in three solid colours – Black, Chroma Key Green and White and two textured surfaces – Granite and Limestone.

The Panoramic background is ideal for shooting larger groups on location, perfect for weddings, prom nights and event photography. The background folds down neatly into its own case and fits easily into a car.

Features and Benefits

- ▶ Up to 4m (13') wide and 2.3m (7'5") high
- ▶ Self-supporting
- ▶ Weighs only 9kg (19.8lb)
- ▶ Packs into a 100cm x 30cm x 35cm (39" x 12" x 13.5") bag



| Specifications | |
|--|-----------|
| Panoramic Background | Code |
| Panoramic Background - Black | LL LB7621 |
| Panoramic Background - White | LL LB7623 |
| Panoramic Background - Granite | LL LB7901 |
| Panoramic Background - Limestone | LL LB7902 |
| Panoramic Background Cover - Black | LL LB7625 |
| Panoramic Background Cover - White | LL LB7627 |
| Panoramic Background Cover - Granite | LL LB7903 |
| Panoramic Background Cover - Limestone | LL LB7904 |



Aluminium Frame Support Kit LA8450



Panoramic Background Chroma Key

The Panoramic is a collapsible 4m (13') wide, 2.3m (7'5") high background that folds down neatly into its own carry case and fits easily into a car. Weighing only 9kg (19.8lb) it's ideal for busy image-makers on the move. The background is completely self-supporting and can be set up in minutes. The structure comprises three individual aluminium framed sections, connected together with a hinge clip to allow the background to be set up flat to lean against a wall or with the side frames folded in to create a wraparound effect. The Chroma Key cover just simply clips to the aluminium frame and creates a taught, seamless surface.

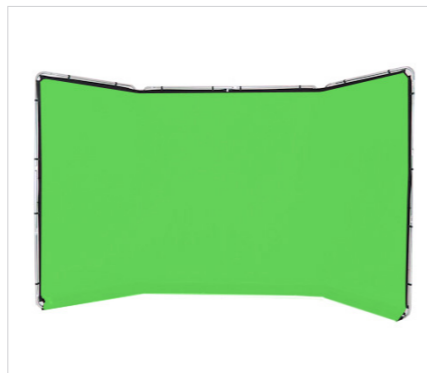
The background is ideal for live stream and post-production keying projects. Its impressive 4m width creates enough working area for multiple camera angles and subjects. Although the brushed fabric is incredibly non-reflective, the height and width combined is enough to place the subject/s at a good working distance from the background eliminating risk of any colour spill from the Chroma Key surface.

Features and Benefits

- ▶ Ideal for live stream and post-production keying
- ▶ Enough working area for multiple camera angles and subjects
- ▶ Self Supporting
- ▶ Quick to assemble
- ▶ Collapses down into a fabric bag
- ▶ Available in Chroma Key Green & Chroma Key Blue

Specifications

| Panoramic Background | Code |
|-------------------------------------|-----------|
| Background - Chroma Key Green | LL LB7622 |
| Background - Chroma Key Blue | LL LB7943 |
| Background Cover - Chroma Key Green | LL LB7626 |
| Background Cover - Chroma Key Blue | LL LB7963 |



Panoramic Background Connection Kit

Features and Benefits

- ▶ Allows multiple screens to be joined side-by-side
- ▶ 6 inch skirt on bottom edge provides continuation of screen
- ▶ Available in chroma key green and blue
- ▶ Easy to set up

Specifications

| Panoramic Background Connection Kit | 2.3m (7.5') |
|-------------------------------------|-------------|
| Chroma Key Green | LL LB7945 |
| Chroma Key Blue | LL LB7944 |

Accessories

- Vinyl Floor Strip 1.37m x 4m Chroma Key Green
- Vinyl Background / Floor 2.75m x 6m Chroma Key Green
- Gaffer Tape 50mm x 50m Chroma Key Green

The highly successful Panoramic Background continues to evolve with users constantly finding new ways to use this highly versatile product. A popular configuration for the Panoramic Chroma Key background is to join two or sometimes three panels together to make a much wider background to meet the needs of their chroma key film or live stream production.

To enable users to easily join multiple Panoramic Backgrounds together side by side and provide a continuation of the chroma key surface from one panel to the next, the new Panoramic Background Connection Kit includes two hinge brackets to join the aluminium frames plus a clip on chroma key joining strip to conceal the aluminium frames and the hinge brackets. The connection kit takes only a few minutes to assemble and packs down neatly to fit inside the existing Panoramic backgrounds rigid carry case.



StudioLink Swatches



Chroma Key Green

Chroma Key Blue

StudioLink

The StudioLink Background is a unique modular chroma key background system for use in the studio or out on location. Once assembled, multiple 3 x 3m (10' x 10') StudioLink screens can be joined together using the StudioLink Chroma Key Connection Kit (available separately) to form various configurations; side by side in a straight line or as a curvature up to the point of creating a full 360 degree enclosure. In addition, screens singularly or side-by-side can be rigged (using standard grip equipment) one above the other to create a second tier of screens.

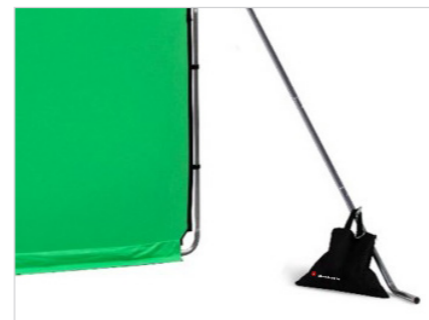


| Features and Benefits | |
|-----------------------|---|
| ▶ | Reversible |
| ▶ | Chroma Key rim tape as standard |
| ▶ | Crease resistant fabric |
| ▶ | Fast to set up and dismantle |
| ▶ | For inside and outside use |
| ▶ | Collapses to a third of its original size |

| Specifications | |
|-----------------------------|------------|
| StudioLink | 3m (10') |
| Chroma Key Green Screen Kit | LL LR83350 |
| Chroma Key Blue Screen Kit | LL LR83352 |
| StudioLink Covers | 3m (10') |
| Chroma Key Green Cover | LL LR83351 |
| Chroma Key Blue Cover | LL LR83353 |



Gaffer Tape 50mm x 50m LL LB7966



Aluminium Frame Support Kit LA8450

StudioLink Connection kit



| Specifications | |
|---------------------------------|------------|
| StudioLink Connection Kits | 3m (10') |
| Chroma Key Green Connection Kit | LL LR83354 |
| Chroma Key Blue Connection Kit | LL LR83355 |

StudioLink Accessories

| Specifications | |
|--|-----------|
| StudioLink Accessories | |
| Vinyl Floor 1.37x4m Chroma Key Green | LL LB7965 |
| Vinyl Background 2.75mx6m Chroma Key Green | LL LB7781 |
| Gaffer Tape 50mm x 50m Chroma Key Green | LL LB7966 |
| Aluminium Frame Support Kit | LL LA8450 |
| Skylite Rapid Griphead | LL LA8446 |
| Sand Bag | LL LB1592 |



Skylite's special griphead allows it to be fixed to stands and tilted as required. LL LA8446



Sand Bag LL LB1592

Vinyl Floor Strip 1.37m x 4m Chroma Key Green

The Vinyl Floor Strip 1.37m x 4m Chroma Key Green is a modular floor created to pair perfectly with Manfrotto's leading chroma key green background solutions such as the Panoramic, Chroma Key FX and Studio Link.

These compact rolls are easy to transport due to their manageable length and can be used individually, in a 2x2 formation, 1x3 formation or however large or small required.

The modular floor strips offer the professional content creator the ultimate flexibility; one day they may need only one panoramic background with a single floor strip, the next they may need two panoramic backgrounds joined together and a large floor area to work with in a wraparound studio set up.

Features and Benefits

- ▶ Pair perfectly with Manfrotto's Chroma Key Background range
- ▶ Modular strips can be used individually or joined together
- ▶ Hard-wearing, easy to clean and reusable
- ▶ Matte finish – to prevent unwanted reflections
- ▶ Crease resistant
- ▶ Strong aluminium inner-core tube on background/floor

Specifications

| Chroma Key Vinyl Backgrounds and Floors | Code |
|--|-----------|
| Vinyl Floor 1.37x4m Chroma Key Green | LL LB7965 |
| Vinyl Background 2.75mx6m Chroma Key Green | LL LB7781 |



Vinyl Background / Floor 2.75m x 6m Chroma Key Green



The Vinyl Background / Floor 2.75m x 6m Chroma Key Green can be used as either a full-length background using a support system thanks to the included aluminium core or can be used as a floor solution.

Created to pair perfectly with Manfrotto's leading chroma key green background solutions such as the Panoramic, Chroma Key FX and Studio Link by using the industry standard chroma key green reference.



Gaffer Tape 50mm x 50m Chroma Key Green

Features and Benefits

- ▶ Ideal for securing background solutions to the floor
- ▶ Ultra-Strong hold
- ▶ Leaves no sticky residue

Manfrotto's Gaffer Tape 50mm x 50m Chroma Key Green is ideal for securing background solutions to the floor and to cover joins for seamless keying when using Manfrotto's vinyl floor solutions.

It pairs perfectly with our existing Manfrotto chroma key range using the industry standard chroma key green reference as well as being premium quality tape that leaves no sticky residue when removed at the end of a shoot.

Specifications

| Chroma Key Gaffer Tape | Code |
|---|-----------|
| Gaffer Tape 50mm x 50m Chroma Key Green | LL LB7966 |



Chroma Key Collapsible Swatches



Chroma Key Green

Chroma Key Blue

Chroma Key Collapsible Reversibles

Chroma Key has been used in film and cinema production as a tool to mix two or more images together in all aspects of the art. It is increasingly used in digital photography to cut and paste a subject onto a background.

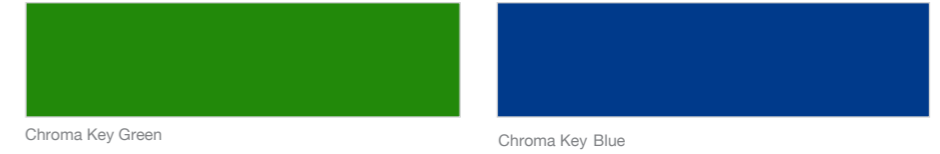
Features and Benefits

- ▶ Reversible
- ▶ Chroma Key rim tape as standard
- ▶ Crease resistant fabric
- ▶ Fast to set up and dismantle
- ▶ For inside and outside use
- ▶ Collapses to a third of its original size



| Specifications | | |
|-----------------------------------|------------------------|-----------|
| Chroma Key Collapsible Background | Size | Code |
| Chroma Key Blue/ Green Reversible | 1.5m x 1.8m (5' x 6') | LL LC5687 |
| | 1.8m x 2.1m (6' x 7') | LL LC5987 |
| Chroma Key Green | 1.8m x 2.1m (6' x 7') | LL LC5981 |
| | 1.8m x 2.75m (6' x 9') | LL LC6981 |

Chroma Key Curtain Swatches



Chroma Key Green

Chroma Key Blue

Chroma Key Curtain

The Lastolite By Manfrotto Chroma Key Curtains are available in two sizes, 3m x 3.5m (10' x 12'") and 3m x 7m (10' x 24'"). Choose from Green or reversible Blue / Green versions. For most effective use, mount with Lastolite's background support system (see page 65-66).

Features and Benefits

- ▶ Available in green and reversible blue/green
- ▶ Machine washable 40 degrees celcius
- ▶ Stretches to remove creases
- ▶ Available in two sizes

Specifications

| Chroma Key Curtains | 3m x 3.5m (10' x 12') | 3m x 7m (10' x 24') |
|-----------------------|-----------------------|---------------------|
| Green | LL LC5781 | |
| Reversible Blue/Green | LL LC5787 | |
| Green | | LL LC5881 |
| Reversible Blue/Green | | LL LC5887 |



Superwhite Vinyl Background

Manfrotto's 'wipe clean' vinyl backgrounds can literally be used over and over again. Simply wipe away any dirt or footprints at the end of your shoot, then roll it back up ready for next time! It couldn't be easier. The vinyl can easily be suspended using our LL LB1128 background support system, while the 3.5m (White only) can be suspended using the 4m Solo Background Support (LL LB1142).

Note: Not compatible with the Manfrotto Expan Drive System

Features and Benefits

- ▶ Wipe clean
- ▶ Long lasting
- ▶ Ideal for 'high key' photography
- ▶ 2.75m* x 6m (9' x 20') and 3.5m x 6m (11'5" x 20')

Specifications

| Superwhite Vinyl Background | Code |
|---|-----------|
| Superwhite Vinyl Background 2.75m* x 6m | LL LB7761 |
| Superwhite Vinyl Background 3.5m x 6m | LL LB7763 |
| Black Vinyl Background 2.75m* x 6m | LL LB7765 |

*2.75m wide vinyl is rolled onto an aluminium core 2.78m wide (+/-1cm tolerance)



Paper Roll Backgrounds

Features and Benefits

- ▶ Support systems available
- ▶ Available in 3 sizes
- ▶ Comprehensive range of colours
- ▶ Totally crease free
- ▶ Disposable if marked
- ▶ Cut your own custom lengths

Specifications

| Paper Roll Backgrounds size: 2.72m x 11m (107"x36') | Code |
|---|-----------|
| Super White | LL LP9001 |
| Heaven | LL LP9002 |
| Corn | LL LP9004 |
| Navy | LL LP9005 |
| Wine | LL LP9006 |
| Red | LL LP9008 |
| Arctic Grey | LL LP9012 |
| Conker | LL LP9016 |
| Black | LL LP9020 |
| Marigold | LL LP9024 |
| Sandstone | LL LP9025 |
| Flint | LL LP9026 |
| Shadow Grey | LL LP9027 |
| Amethyst | LL LP9029 |
| Ocean | LL LP9030 |
| Kingfisher | LL LP9031 |
| Gala Pink | LL LP9037 |
| Primrose | LL LP9038 |
| Leaf Green | LL LP9046 |
| Aztec | LL LP9047 |
| White | LL LP9050 |
| Ivory | LL LP9051 |
| Royal | LL LP9058 |
| Pewter | LL LP9060 |
| Purple | LL LP9062 |
| Regal Blue | LL LP9065 |
| Yellow | LL LP9071 |
| Chroma Key Green | LL LP9073 |
| Size: 1.35m x 11m (53" x 36') | Code |
| Super White | LL LP9101 |
| Black | LL LP9120 |
| Shadow Grey | LL LP9127 |
| Size: 3.55m x 30m (140" x 98') | Code |
| Super White | LL LP9201 |
| Black | LL LP9220 |



Magnetic Background Support

PATENT PENDING

The Lastolite By Manfrotto Magnetic Background Support makes attaching and removing backgrounds simple. The steel band located within the rim of The Lastolite by Manfrotto backgrounds attaches directly to the two magnetic housings on the crossbar. The support can be raised to its desired position and the background simply lifted into position. The Magnetic Background Support will fit to most lighting stands with a 5/8" spigot. A kit is also available which includes a LL LS1159 lighting stand and carry case.

| Features and Benefits | |
|-----------------------|------------------------|
| ▶ | Magnetic connectors |
| ▶ | Universal fitting |
| ▶ | Available as a kit* |
| ▶ | Holds up to 5kg (11lb) |

| Specifications | |
|----------------------------------|-----------|
| Magnetic Background Support | Code |
| Magnetic Background Support | LL LB1120 |
| Magnetic Background Support Kit* | LL LB1121 |

*Kit includes Magnetic Background support, LL LS1159 light stand and carry case



Magnetic Background Support LL LB1120



Magnetic Background Support Kit LL LB1121



Magnetic connectors



Fits to most lighting stands



Fit to Out of Focus Background

Solo Background Support

The Solo background support features a unique pivoting cross bar which makes raising the background on the supports a much easier and safer operation. Rather than step by step adjustments at each end of the support system the new pivoting connectors allow for much greater steps without making the whole structure unstable and unmanageable. The support is available as a 3m wide or 4m wide solution. The 4m version can also be extended to 6m to accommodate wider textile backgrounds and features our heavy duty stands which allow the use of our wide width vinyl (page 63). Each kit comes in a handy carry case which fits easily into a car.

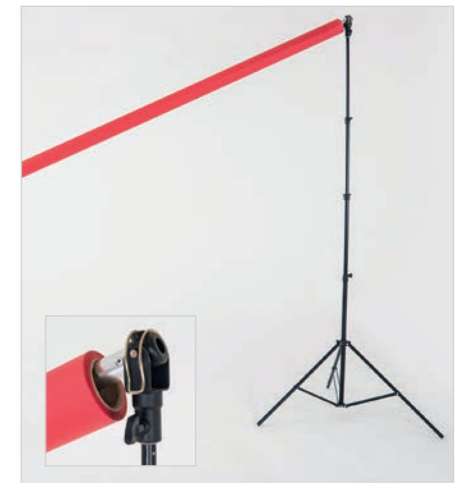
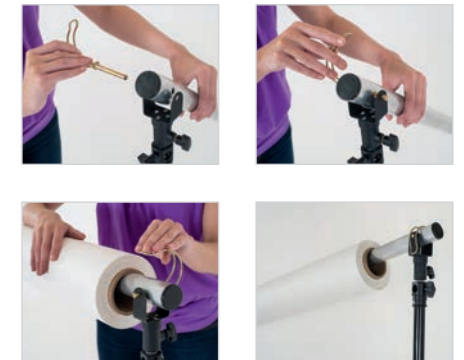
| Features and Benefits | |
|-----------------------|---------------------------------------|
| ▶ | Single user operation |
| ▶ | Unique pivoting cross bar |
| ▶ | 3m, 4m and 6m widths, up to 2.8m high |

| Specifications | |
|--|-----------|
| Solo Background Support | Code |
| Solo Background Support 3m (10') | LL LB1105 |
| Solo Background Support 4m (13') Heavy Duty | LL LB1142 |
| Solo Background Support Extension* 2m (6.5') | LL LB1143 |

*For 4m Background Support only



Solo Support Brackets



Background Supports

There are a number of background supports systems to accommodate curtain, collapsible and roll up backgrounds.



LL LA1108



LL LB1128

| Specifications | |
|--|-----------|
| Background supports | Code |
| Support for 3m (10') wide curtain and roll up backgrounds (metal collars) | LL LA1108 |
| Heavy duty support for paper and vinyl roll up backgrounds (metal collars) | LL LB1128 |
| Telescopic crossbar | LL LB1119 |
| Aluminium Frame Support Kit | LA8450 |



LL LA1108



LL LB1119



LA845

| Specifications | |
|----------------------|-----------|
| Tiltheads | Code |
| Tilthead Shoe Lock | LL LA2422 |
| Tilthead with spigot | LL LA2401 |

*Includes Waist Holder



Tilthead with Spigot LL LA2401



Tilthead Shoe Lock LL LA2422

Brackets and Handles

Stands

There are a number of different lighting and support stands available.



4 Section Heavy Duty LL LS1160 (left)
4 Section Standard LL LS1158 (right)



4 Section Air Cushioned LL LS1159



Sand Bag LL LB1592



Metal Collar



| Specifications | |
|--|-----------|
| Stands | Code |
| 4 section standard lighting stand with plastic collars - Collapsible height: 84cm (33") Minimum height: 99cm (39") Maximum height: 310cm (122") Spread: 120cm (47") Loading capacity: 2.5kg (5.5lb) Net Weight: 1.25kg (2.8lb) Maximum loading capacity, when each section is shortened by 2.54cm (1"): 4kg (8.8lb) | LL LS1158 |
| 4 section air cushioned lighting stand with metal collars - Collapsible height: 84cm (33") Minimum height: 99cm (39") Maximum height: 298cm (117") Spread: 120cm (47") Loading capacity: 3kg (6.6lb) Net Weight: 1.33kg (2.9lb) Maximum loading capacity, when each section is shortened by 2.54cm (1"): 5kg (11lb) | LL LS1159 |
| 4 section heavy duty air cushioned lighting stand with metal collars Collapsible height: 106cm (42") Minimum height: 124cm (49") Maximum height: 360cm (142") Spread: 110cm (43") Loading capacity: 8kg (17.6lb) Net weight: 2.1kg (4.6lb) Maximum loading capacity, when each section is shortened by 2.54cm (1"): 12kg (26.4lb) | LL LS1160 |
| Sand Bag | LL LB1592 |

Posing Tubs

- Features and Benefits**
- ▶ Variety of sizes
 - ▶ Nestable 'Russian Doll' style for easy storage
 - ▶ Hard wearing nylon covers with padded seats
 - ▶ Includes a carry case with shoulder strap
 - ▶ White covers are a simple slide on 'sock' design

Specifications

| Posing Tubs | Code |
|-------------------------|-----------|
| Posing Tubs | LL LA8014 |
| White Posing Tub Covers | LL LA8015 |



- Features and Benefits**
- ▶ Multi position
 - ▶ Waterproof covering
 - ▶ Supports babies of all ages

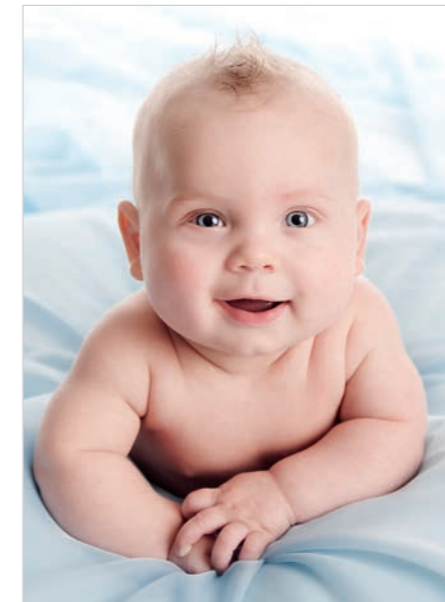
Specifications

| Baby Poser | Code |
|------------|-----------|
| Baby Poser | LL LA8017 |



Baby Poser

The baby poser is a range of bead filled cushions designed to support a baby securely during the shoot. The cushions can be configured in different ways to pose babies of all ages comfortably on their back or front, kneeling or standing. When the cushions are positioned how you want them, fabric can be placed over the cushions to create the background colour of your choice. Each cushion is covered with a waterproof fabric in case of any little accidents!



| Art. No | Description | Page |
|-------------|--|------------|
| LL LA1100 | Universal Bracket 50cm - 120cm (20" - 48") | 16 |
| LL LA1107 | Panelite Bracket 95cm - 180cm (38" - 72") | 16 |
| LL LA1108 | Support for 3m (10') wide curtain and roll up backgrounds (metal collars) | 54 |
| LL LA2401 | Tilthead with spigot | 25, 55 |
| LL LA2422 | Tilthead Shoe Lock | 55 |
| LL LA2430 | TriGrip Bracket | 13 |
| LL LA8014 | Posing Tubs | 57 |
| LL LA8015 | White Posing Tub Covers | 57 |
| LL LA8017 | Baby Poser | 57 |
| LL LA8444 | Skylite Rapid Bag | 22 |
| LL LA8446 | Skylite Rapid Griphead | 35, 45 |
| LL LA8449 | Skylite Rapid Crossbar Handle | 22 |
| LL LA8450 | Aluminium Frame Support Kit | 22, 35, 45 |
| LL LB1105 | Solo Background Support 3m (10') | 53 |
| LL LB1119 | Telescopic crossbar | 54 |
| LL LB1120 | Magnetic Background Support | 52 |
| LL LB1121 | Magnetic Background Support Kit | 52 |
| LL LB1128 | Heavy duty support for paper and vinyl roll up backgrounds (metal collars) | 54 |
| LL LB1142 | Solo Background Support 4m (13') Heavy Duty | 53 |
| LL LB1143 | Solo Background Support Extension 2m (6.5') | 53 |
| LL LB1592 | Sand Bag | 45, 56 |
| LL LB56GB | Plain Collapsible Backgrounds 1.5m x 1.8m (5' x 6') Black / Mid Grey | 30 |
| LL LB56GW | Plain Collapsible Backgrounds 1.5m x 1.8m (5' x 6') White / Mid Grey | 30 |
| LL LB5705 | Vintage Collapsible Backgrounds 1.5 x 2.1m (5' x 7') Tobacco/Olive | 31 |
| LL LB5706 | Urban Collapsible Backgrounds Classic Red Brick / Distressed White Brick 1.5 x 2.1m | 32 |
| LL LB5707 | Urban Collapsible Backgrounds Painted White Brick / Industrial Grey Brick 1.5 x 2.1m | 32 |
| LL LB5713 | Urban Collapsible Backgrounds Painted Rusty Metal / Plaster Wall Brick 1.5 x 2.1m | 32 |
| LL LB5715 | Urban Collapsible Backgrounds Painted Derelict Wall / Wooden Fenc Brick 1.5 x 2.1m | 32 |
| LL LB5720 | Vintage Collapsible Backgrounds 1.5 x 2.1m Ink/Sage | 31 |
| LL LB5721 | Vintage Collapsible Backgrounds 1.5 x 2.1m Walnut/Pewter | 31 |
| LL LB5722 | Vintage Collapsible Backgrounds 1.5 x 2.1m Aubergine/Crimson | 31 |
| LL LB5730 | Out of Focus Backgrounds Summer Foliage / City Lights 1.2m x 1.5m (4' x 5') | 33 |
| LL LB5731 | Out of Focus Backgrounds Autumn Foliage / Seascape 1.2m x 1.5m (4' x 5') | 33 |
| LL LB5745 | Vintage Collapsible Backgrounds 1.5 x 2.1m (5' x 7') Smoke/Concrete | 31 |
| LL LB5750JM | Joe McNally Ironworks Collapsible Background 1.5m x 2.1m (5' x 7') | 31 |
| LL LB5921 | Plain Collapsible Backgrounds 1.8m x 2.15m (6' x 7') Black / White | 30 |
| LL LB6701 | Plain Collapsible Backgrounds 1.8m x 2.15m (6' x 7') Black / White with train | 30 |
| LL LB6751 | Plain Collapsible Backgrounds 1.8m x 2.15m (6' x 7') Blue / Pink | 30 |
| LL LB6752 | Plain Collapsible Backgrounds 1.8m x 2.15m (6' x 7') Red / Purple | 30 |
| LL LB67GB | Plain Collapsible Backgrounds 1.8m x 2.15m (6' x 7') Black / Mid Grey | 30 |
| LL LB67GW | Plain Collapsible Backgrounds 1.8m x 2.15m (6' x 7') White / Mid Grey | 30 |
| LL LB6921 | Plain Collapsible Backgrounds 1.8m x 2.75m (6' x 9') Black / White | 30 |
| LL LB7621 | Panoramic Background - 4m (13') - Black | 41 |
| LL LB7622 | Panoramic Background - 4m (13') - Green | 42 |
| LL LB7623 | Panoramic Background - 4m (13') - White | 41 |
| LL LB7625 | Panoramic Background Cover - 4m (13') - Black | 41 |
| LL LB7626 | Panoramic Background Cover - 4m (13') - Green | 42 |
| LL LB7627 | Panoramic Background Cover - 4m (13') - White | 41 |
| LL LB7761 | Superwhite Vinyl Background 2.75m x 6m | 50 |
| LL LB7763 | Superwhite Vinyl Background 3.5m x 6m | 50 |
| LL LB7765 | Black Vinyl Background 2.75m x 6m | 50 |
| LL LB7901 | Panoramic Background - 4m (13') - Granite | 41 |
| LL LB7902 | Panoramic Background - 4m (13') - Limestone | 41 |
| LL LB7903 | Panoramic Background Cover - 4m (13') - Granite | 41 |
| LL LB7904 | Panoramic Background Cover - 4m (13') - Limestone | 41 |
| LL LB7924 | Ezyframe Background 2 x 2.3m (6'7" x 7'5") Olive | 35 |
| LL LB7925 | Ezyframe Cover Olive | 35 |

| Art. No | Description | Page |
|-----------|---|------|
| LL LB7926 | Ezyframe Background 2 x 2.3m (6'7" x 7'5") Tobacco | 35 |
| LL LB7927 | Ezyframe Cover Tobacco | 35 |
| LL LB7928 | Ezyframe Background 2 x 2.3m (6'7" x 7'5") Smoke | 35 |
| LL LB7929 | Ezyframe Cover Smoke | 35 |
| LL LB7930 | Ezyframe Background 2 x 2.3m (6'7" x 7'5") Concrete | 35 |
| LL LB7931 | Ezyframe Cover Concrete | 35 |
| LL LB7944 | Panoramic Background Connection Kit 2.3m (7.5') Chroma Key Blue | 43 |
| LL LB7945 | Panoramic Background Connection Kit 2.3m (7.5') Chroma Key Green | 43 |
| LL LB8803 | HiLite Bottletops Super Black 1.8m x 2.15m (6' x 7') | 38 |
| LL LB8857 | HiLite_Background 1.5m x 2.15m (5' x 7') | 37 |
| LL LB8858 | Cleanable Vinyl Train For the 1.5m x 2.15m (5' x 7') HiLite | 37 |
| LL LB8867 | HiLite_Background 1.8m x 2.15m (6' x 7') | 37 |
| LL LB8868 | Cleanable Vinyl Train For the 1.8m x 2.15m (6' x 7') HiLite | 37 |
| LL LB8870 | HiLite Bottletops Grey 1.8m x 2.15m (6' x 7') | 38 |
| LL LB8878 | HiLite_Background 2.15m x 2.5m (7' x 8') | 37 |
| LL LB8879 | Cleanable Vinyl Train For the 2.15m x 2.5m (7' x 8') HiLite | 37 |
| LL LB8881 | HiLite Bottletops Chroma Key Green 1.8m x 2.15m (6' x 7') | 38 |
| LL LB8967 | HiLite Shapers and Masks | 39 |
| LL LB8968 | HiLite Shaper | 39 |
| LL LB8969 | HiLite Window Voile | 39 |
| LL LB8990 | HiLite_Background 1m x 1.4m (3'6" x 4'6") | 37 |
| LL LC5621 | Plain Collapsible Backgrounds 1.5m x 1.8m (5' x 6') Black / White | 30 |
| LL LC5687 | Chroma Key Collapsible Background 1.5m x 1.8m (5' x 6') Chroma Key Blue/ Green Reversible | 48 |
| LL LC5781 | Chroma Key Curtains 3m x 3.5m (10' x 12') Green | 49 |
| LL LC5787 | Chroma Key Curtains 3m x 3.5m (10' x 12') Reversible Blue/Green | 49 |
| LL LC5881 | Chroma Key Curtains 3m x 7m (10' x 24') Green | 49 |
| LL LC5887 | Chroma Key Curtains 3m x 7m (10' x 24') Reversible Blue/Green | 49 |
| LL LC5981 | Chroma Key Collapsible Background 1.8m x 2.15m (6' x 7') Chroma Key Green | 48 |
| LL LC5987 | Chroma Key Collapsible Background 1.8m x 2.1m (6' x 7') Chroma Key Blue/ Green Reversible | 48 |
| LL LC6981 | Chroma Key Collapsible Background 1.8m x 2.75m (6' x 9') Chroma Key Green | 48 |
| LL LP9001 | Paper Roll Backgrounds 2.72m x 11m (107"x36") Super White | 51 |
| LL LP9002 | Paper Roll Backgrounds 2.72m x 11m (107"x36") Heaven | 51 |
| LL LP9004 | Paper Roll Backgrounds 2.72m x 11m (107"x36") Corn | 51 |
| LL LP9005 | Paper Roll Backgrounds 2.72m x 11m (107"x36") Navy | 51 |
| LL LP9006 | Paper Roll Backgrounds 2.72m x 11m (107"x36") Wine | 51 |
| LL LP9008 | Paper Roll Backgrounds 2.72m x 11m (107"x36") Red | 51 |
| LL LP9012 | Paper Roll Backgrounds 2.72m x 11m (107"x36") Arctic Grey | 51 |
| LL LP9016 | Paper Roll Backgrounds 2.72m x 11m (107"x36") Conker | 51 |
| LL LP9020 | Paper Roll Backgrounds 2.72m x 11m (107"x36") Black | 51 |
| LL LP9024 | Paper Roll Backgrounds 2.72m x 11m (107"x36") Marigold | 51 |
| LL LP9025 | Paper Roll Backgrounds 2.72m x 11m (107"x36") Sandstone | 51 |
| LL LP9026 | Paper Roll Backgrounds 2.72m x 11m (107"x36") Flint | 51 |
| LL LP9027 | Paper Roll Backgrounds 2.72m x 11m (107"x36") Shadow Grey | 51 |
| LL LP9029 | Paper Roll Backgrounds 2.72m x 11m (107"x36") Amethyst | 51 |
| LL LP9030 | Paper Roll Backgrounds 2.72m x 11m (107"x36") Ocean | 51 |
| LL LP9031 | Paper Roll Backgrounds 2.72m x 11m (107"x36") Kingfisher | 51 |
| LL LP9035 | Paper Roll Backgrounds 2.72m x 11m (107"x36") Grass Green | 51 |
| LL LP9037 | Paper Roll Backgrounds 2.72m x 11m (107"x36") Gala Pink | 51 |
| LL LP9038 | Paper Roll Backgrounds 2.72m x 11m (107"x36") Primrose | 51 |
| LL LP9046 | Paper Roll Backgrounds 2.72m x 11m (107"x36") Leaf Green | 51 |
| LL LP9047 | Paper Roll Backgrounds 2.72m x 11m (107"x36") Aztec | 51 |
| LL LP9050 | Paper Roll Backgrounds 2.72m x 11m (107"x36") White | 51 |
| LL LP9051 | Paper Roll Backgrounds 2.72m x 11m (107"x36") Ivory | 51 |
| LL LP9058 | Paper Roll Backgrounds 2.72m x 11m (107"x36") Royal | 51 |
| LL LP9060 | Paper Roll Backgrounds 2.72m x 11m (107"x36") Pewter | 51 |
| LL LP9062 | Paper Roll Backgrounds 2.72m x 11m (107"x36") Purple | 51 |
| LL LP9065 | Paper Roll Backgrounds 2.72m x 11m (107"x36") Regal Blue | 51 |
| LL LP9071 | Paper Roll Backgrounds 2.72m x 11m (107"x36") Yellow | 51 |
| LL LP9073 | Paper Roll Backgrounds 2.72m x 11m (107"x36") Chroma Key Green | 51 |
| LL LP9101 | Paper Roll Backgrounds 1.35m x 11m (53" x 36") Super White | 51 |
| LL LP9120 | Paper Roll Backgrounds 1.35m x 11m (53" x 36") Black | 51 |
| LL LP9127 | Paper Roll Backgrounds 1.35m x 11m (53" x 36") Shadow Grey | 51 |
| LL LP9201 | Paper Roll Backgrounds 3.55m x 30m (140" x 98") Super White | 51 |
| LL LP9220 | Paper Roll Backgrounds 3.55m x 30m (140" x 98") Black | 51 |

| Art. No | Description | Page |
|-------------|--|------|
| LL LR1250 | EzyBalance 30cm (12") 18% | 23 |
| LL LR1558 | XpoBalance 38cm (15") | 23 |
| LL LR2006 | Collapsible Reflectors 50cm (20") Sunfire / White | 15 |
| LL LR2007 | Collapsible Reflectors 50cm (20") Diffuser, 2 Stops | 15 |
| LL LR2028 | Collapsible Reflectors 50cm (20") Sunlite / Soft Silver | 15 |
| LL LR2031 | Collapsible Reflectors 50cm (20") Silver / White | 15 |
| LL LR2034 | Collapsible Reflectors 50cm (20") Silver / Gold | 15 |
| LL LR2036 | Collapsible Reflectors 50cm (20") Sunfire / Silver | 15 |
| LL LR2041 | Collapsible Reflectors 50cm (20") Gold / White | 15 |
| LL LR2050 | EzyBalance 50cm (20") 18% | 23 |
| LL LR2096 | Bottletop Diffuser with Gold / White & Sunfire / Silver cover 50cm (20") | 16 |
| LL LR3006 | Collapsible Reflectors 76cm (30") Sunfire / White | 15 |
| LL LR3007 | Collapsible Reflectors 76cm (30") Diffuser, 2 Stops | 15 |
| LL LR3028 | Collapsible Reflectors 76cm (30") Sunlite / Soft Silver | 15 |
| LL LR3031 | Collapsible Reflectors 76cm (30") Silver / White | 15 |
| LL LR3034 | Collapsible Reflectors 76cm (30") Silver / Gold | 15 |
| LL LR3036 | Collapsible Reflectors 76cm (30") Sunfire / Silver | 15 |
| LL LR3041 | Collapsible Reflectors 76cm (30") Gold / White | 15 |
| LL LR3050 | EzyBalance 75cm (30") 18% | 23 |
| LL LR3096 | Bottletop Diffuser with Gold / White & Sunfire / Silver cover 75cm (30") | 16 |
| LL LR3300 | HaloCompact 82cm (32") Reflector Silver/White | 7 |
| LL LR3301 | HaloCompact 82cm (32") Diffuser 2 Stop | 7 |
| LL LR3302 | HaloCompact Covers 82cm (32") Reflector Cover Silver/White | 7 |
| LL LR3303 | HaloCompact Covers 82cm (32") Diffuser Cover 2 Stop | 7 |
| LL LR3310 | HaloCompact 82cm (32") Reflector Sunlite/Soft Silver | 7 |
| LL LR3311 | HaloCompact Covers 82cm (32") Reflector Cover Sunlite/Soft Silver | 7 |
| LL LR3320 | HaloCompact 82cm (32") Difflector Soft Silver | 7 |
| LL LR3321 | HaloCompact Covers 82cm (32") Difflector Cover Soft Silver | 7 |
| LL LR3507 | TriGrip Mini 45cm (18") Diffuser, 2 Stops | 11 |
| LL LR3528 | TriGrip Mini 45cm (18") Sunlite / Soft Silver | 11 |
| LL LR3531 | TriGrip Mini 45cm (18") Silver / White | 11 |
| LL LR3536 | TriGrip Mini 45cm (18") Sunfire / Silver | 11 |
| LL LR3541 | TriGrip Mini 45cm (18") Gold / White | 11 |
| LL LR3551 | TriGrip Mini 45cm (18") Diffuser, 1 Stop | 11 |
| LL LR3607 | TriGrip 75cm (30") Diffuser, 2 Stops | 11 |
| LL LR3628 | TriGrip 75cm (30") Sunlite / Soft Silver | 11 |
| LL LR3631 | TriGrip 75cm (30") Silver / White | 11 |
| LL LR3636 | TriGrip 75cm (30") Sunfire / Silver | 11 |
| LL LR3641 | TriGrip 75cm (30") Gold / White | 11 |
| LL LR3651 | TriGrip 75cm (30") Diffuser, 1 Stop | 11 |
| LL LR3652 | TriGrip Difflector 75cm (30") Soft Silver | 14 |
| LL LR3696 | TriFlip 8:1 Kit75cm (30") | 12 |
| LL LR3752 | TriGrip Difflector Large 1.2m (48") Soft Silver | 14 |
| LL LR3806 | Collapsible Reflectors 95cm (38") Sunfire / White | 15 |
| LL LR3807 | Collapsible Reflectors 95cm (38") Diffuser, 2 Stops | 15 |
| LL LR3828 | Collapsible Reflectors 95cm (38") Sunlite / Soft Silver | 15 |
| LL LR3831 | Collapsible Reflectors 95cm (38") Silver / White | 15 |
| LL LR3834 | Collapsible Reflectors 95cm (38") Silver / Gold | 15 |
| LL LR3836 | Collapsible Reflectors 95cm (38") Sunfire / Silver | 15 |
| LL LR3841 | Collapsible Reflectors 95cm (38") Gold / White | 15 |
| LL LR3896 | Bottletop Diffuser with Gold / White & Sunfire / Silver cover 95cm (38") | 16 |
| LL LR4806 | Collapsible Reflectors 120cm (48") Sunfire / White | 15 |
| LL LR4807 | Collapsible Reflectors 120cm (48") Diffuser, 2 Stops | 15 |
| LL LR4828 | Collapsible Reflectors 120cm (48") Sunlite / Soft Silver | 15 |
| LL LR4831 | Collapsible Reflectors 120cm (48") Silver / White | 15 |
| LL LR4834 | Collapsible Reflectors 120cm (48") Silver / Gold | 15 |
| LL LR4836 | Collapsible Reflectors 120cm (48") Sunfire / Silver | 15 |
| LL LR4841 | Collapsible Reflectors 120cm (48") Gold / White | 15 |
| LL LR7206 | Collapsible Reflectors 1.8 x 1.2m (6' x 4') Sunfire / White | 15 |
| LL LR7207 | Collapsible Reflectors 1.8 x 1.2m (6' x 4') Diffuser, 2 Stops | 15 |
| LL LR7228 | Collapsible Reflectors 1.8 x 1.2m (6' x 4') Sunlite / Soft Silver | 15 |
| LL LR7231 | Collapsible Reflectors 1.8 x 1.2m (6' x 4') Silver / White | 15 |
| LL LR7234 | Collapsible Reflectors 1.8 x 1.2m (6' x 4') Silver / Gold | 15 |
| LL LR7236 | Collapsible Reflectors 1.8 x 1.2m (6' x 4') Sunfire / Silver | 15 |
| LL LR7241 | Collapsible Reflectors 1.8 x 1.2m (6' x 4') Gold / White | 15 |
| LL LR811 | Skylite Rapid Frame Small 1.1m x 1.1m (3'6" x 3'6") | 19 |
| LL LR81101R | Skylite Rapid Covers Small 1.1m x 1.1m (3'6" x 3'6") 0.75 Stop Diffuser | 19 |

| Art. No | Description | Page |
|---------------|---|------|
| LL LR81102R | Skylite Rapid Covers Small 1.1m x 1.1m (3'6" x 3'6") Black Velour | 19 |
| LL LR81106R | Skylite Rapid Covers Small 1.1m x 1.1m (3'6" x 3'6") Sunfire / White | 19 |
| LL LR81107R | Skylite Rapid Covers Small 1.1m x 1.1m (3'6" x 3'6") 1.25 Stop Diffuser | 19 |
| LL LR81121R | Skylite Rapid Covers Small 1.1m x 1.1m (3'6" x 3'6") Black / White | 19 |
| LL LR81131R | Skylite Rapid Covers Small 1.1m x 1.1m (3'6" x 3'6") Silver / White | 19 |
| LL LR81143RC | Skylite Rapid Small Kit | 19 |
| LL LR812 | Skylite Rapid Frame Medium 1.1m x 2m (3'6" x 6'6") | 19 |
| LL LR81201R | Skylite Rapid Covers Medium 1.1m x 2m (3'6" x 6'6") 0.75 Stop Diffuser | 19 |
| LL LR81202R | Skylite Rapid Covers Medium 1.1m x 2m (3'6" x 6'6") Black Velour | 19 |
| LL LR81206R | Skylite Rapid Covers Medium 1.1m x 2m (3'6" x 6'6") Sunfire / White | 19 |
| LL LR81207R | Skylite Rapid Covers Medium 1.1m x 2m (3'6" x 6'6") 1.25 Stop Diffuser | 19 |
| LL LR81221R | Skylite Rapid Covers Medium 1.1m x 2m (3'6" x 6'6") Black / White | 19 |
| LL LR81231R | Skylite Rapid Covers Medium 1.1m x 2m (3'6" x 6'6") Silver / White | 19 |
| LL LR81243RC | Skylite Rapid Medium Kit | 19 |
| LL LR815 | Skylite Rapid Frame Midi 1.5m x 1.5m (5' x 5') | 19 |
| LL LR81501R | Skylite Rapid Covers Midi 1.5m x 1.5m (5' x 5') 0.75 Stop Diffuser | 19 |
| LL LR81507R | Skylite Rapid Covers Midi 1.5m x 1.5m (5' x 5') 1.25 Stop Diffuser | 19 |
| LL LR81521R | Skylite Rapid Covers Midi 1.5m x 1.5m (5' x 5') Black / White | 19 |
| LL LR81531R | Skylite Rapid Covers Midi 1.5m x 1.5m (5' x 5') Silver / White | 19 |
| LL LR81544R | Skylite Rapid Midi Kit | 19 |
| LL LR822 | Skylite Rapid Frame Large 2m x 2m (6'6" x 6'6") | 19 |
| LL LR82201R | Skylite Rapid Covers Large 2m x 2m (6'6" x 6'6") 0.75 Stop Diffuser | 19 |
| LL LR82202R | Skylite Rapid Covers Large 2m x 2m (6'6" x 6'6") Black Velour | 19 |
| LL LR82206R | Skylite Rapid Covers Large 2m x 2m (6'6" x 6'6") Sunfire / White | 19 |
| LL LR82207R | Skylite Rapid Covers Large 2m x 2m (6'6" x 6'6") 1.25 Stop Diffuser | 19 |
| LL LR82221R | Skylite Rapid Covers Large 2m x 2m (6'6" x 6'6") Black / White | 19 |
| LL LR82231R | Skylite Rapid Covers Large 2m x 2m (6'6" x 6'6") Silver / White | 19 |
| LL LR82243RC | Skylite Rapid Large Kit | 19 |
| LL LR833 | Skylite Rapid Frame Extra Large 3m x 3m (10' x 10') | 19 |
| LL LR83301R | Skylite Rapid Covers Extra Large 3m x 3m (10' x 10') 0.75 Stop Diffuser | 19 |
| LL LR83302 | Skylite Rapid Covers Extra Large 3m x 3m (10' x 10') Black Velour | 19 |
| LL LR83307R | Skylite Rapid Covers Extra Large 3m x 3m (10' x 10') 1.25 Stop Diffuser | 19 |
| LL LR83344R | Skylite Rapid Extra Large Kit | 19 |
| LL LRCASE1025 | Skylite Rigid Case 103cm x 19cm x 14cm | 22 |
| LL LRCASE775 | Skylite Rigid Case 78cm x 19cm x 14cm | 22 |
| LL LS1158 | 4 section standard lighting stand with plastic collars | 56 |
| LL LS1159 | 4 section air cushioned lighting stand with metal collars | 56 |
| LL LS1160 | 4 section heavy duty air cushioned lighting stand with metal collars | 56 |
| LL LS2211 | Ezybox Micro W:20cm x H:14cm (8" X 5.5") | 25 |
| LL LS2350N | Ezybox Pro Speedring Plate (Bron) | 28 |
| LL LS2351N | Ezybox Pro Speedring Plate (Bowens) | 28 |
| LL LS2352N | Ezybox Pro Speedring Plate (Elinchrom) | 28 |
| LL LS2353N | Ezybox Pro Speedring Plate (Balcar) | 28 |
| LL LS2354N | Ezybox Pro Speedring Plate (Profoto) | 28 |
| LL LS2414 | Ezybox Hotshoe Bracket (with standard flash mount) | 25 |
| LL LS2438 | Ezybox Hotshoe Small | 24 |
| LL LS2462 | Ezybox Hotshoe Medium | 24 |
| LL LS2480 | Ezybox Hotshoe Large | 24 |
| LL LS2601 | Strobo Direct to Flashgun Bracket | 36 |
| LL LS2701 | Ezybox Pro Portable Flash Bracket | 27 |
| LL LS2705 | Elinchrom Quadra/Profoto Spigot | 28 |
| LL LS2962 | Fabric Grid for LL LS2462 Ezybox Hotshoe Medium 54cm (21") | 25 |
| LL LS2980 | Fabric Grid for LL LS2480 Ezybox Hotshoe Large 76cm (30") | 25 |
| LL LS3030 | Ezybox Pro Strip 150cm x 30cm | 27 |
| LL LU2127 | Trifold Umbrella | 13 |

| Country | Company | Telephone Number | Web Site |
|----------------------|---|--------------------|-------------------------------|
| Algeria | Sabi Systems | +2132 192 1860 | www.sabisystems.com |
| Argentina | Dexel SRL | +54 11 4687 3001 | www.dexel.com |
| Argentina | Nicatel SRL | +54 11 4777 9797 | www.teletecnica.com |
| Argentina | Santiago Distrifot SRL | +54 11 4308 3686 | www.distrifot.com.ar |
| Australia | Vitec Imaging Distribution | +61 1300 123 325 | www.adeal.com.au |
| Austria | Photon GmbH | +43 7272 757970 | www.foto-mueller.at |
| Bangladesh | Trade Corporation | +880 2 9555354 | www.tradeco.com.bd |
| Belarus | Office Technologies JSC | +375 17 267 41 21 | www.offtech.by |
| Belgium | Servix.BE | +32 3 887 77 20 | www.servix.be |
| Bolivia | Dadco Technology | +591 78848871 | www.dadcotechnology.com.bo |
| Bosnia Hercegovina | Refot BH d.o.o | +387 51 324 440 | www.refot.com |
| Brazil | Lumatek Ltda. | +55 1150602900 | www.tripes.com.br |
| Bulgaria | Dynaphos | +359 2 4901 555 | www.dynaphos.com |
| Canada | Gentec International | +1 905 513 7733 | www.manfrotto.ca/lastolite |
| Chile | Matrix LTDA | +56 2 237 29 911 | www.matrixvideo.cl |
| China | Vitec Imaging Distribution Shanghai Ltd | +86 21 62360808 | www.manfrotto.cn/lastolite |
| Columbia | Congo Films (COLOMBIA) | +57 1 630 4792 | www.congofilms.tv |
| Costa Rica | Dima Industrial y Comercial S.A. | +506 2234 8500 | www.dima.cr |
| Costa Rica | Imax de Costa Rica S.A. | +506 4051 0000 | www.imax.co.cr |
| Croatia | Prizma d.o.o. | +385 1 3895 127 | www.prizma-foto.hr |
| Cyprus | Mangoian Bros. Ltd | +357 22 672 928 | www.mangoian.com |
| Czech Republic | E K G s.r.o. | +42 0495538132 | www.ekfoto.cz |
| Denmark | Aifo AB | +46 8 720 06 45 | www.aifo.se |
| Estonia | Nordic Digital AS | +372 733 7700 | www.nordic-digital.ee |
| Finland | Color-Kolmio Oy | +358 20 753 0359 | www.colorkolmio.fi |
| France | Prophot | +33 1 81 72 01 03 | www.prophot.com |
| Germany | Vitec Imaging Distribution | +49 2203 202130 | www.manfrotto.de/lastolite |
| Greece | H. Alexandrou & Co E.E. | +30 210 72 36 847 | www.albapv.gr |
| Hong Kong | Advance Multimedia Company Limited | +852 2332 8961 | www.hkosm.hk |
| Hungary | Luminis Ltd. | +36 1 371 1983 | www.manfrotto.hu |
| Iceland | Beco | +354 533 3411 | www.beco.is |
| India | Srishti Digilife Private Limited | +91 44 24364778 | www.srishtidigilife.co.in |
| Ireland | Vitec Imaging Distribution | +44 (0)1530 566090 | www.manfrotto.co.uk/lastolite |
| Israel | A.B.S. Altman Broadcast Services | +972 (0)3-7682000 | www.absphoto.co.il |
| Italy | Vitec Imaging Distribution | +39 0424 555554 | www.manfrotto.it/lastolite |
| Japan | Vitec Imaging Distribution | +81 3-5404-6871 | www.manfrotto.jp/lastolite |
| Kazakhstan | Acis Distribution | +7 727 2642222 | www.acis-d.com |
| Korea, South | Saeki P&C Co., Ltd. | +82 2 3668 3114 | www.saeki.co.kr |
| Kuwait | Advanced Media Trading | +971 4 352 99 77 | www.amt.tv |
| Kyrgyzstan | Acis Distribution | +7 727 2642222 | www.acis-d.com |
| Latvia | Sia Mikrocentrs | +371 67450149 | www.mikrocentrs.com |
| Lebanon | Gulbenk Corporation | +961 4 723 777 | www.gulbenkcorporation.com |
| Lithuania | UAB Fototechnika | +370 658 00700 | www.fototechnika.lt |
| Luxembourg | Lecuit Opto-Technical SA | +352 495607-1 | www.lecuit.lu |
| Macedonia | Refot BH d.o.o | +389 23215985 | www.refot.com |
| Malaysia | V Photo Sdn. Bhd. | +603-7958 3788 | www.vphoto.com.my |
| Malta | The Foto Grafer Ltd | +356 21 66 01 66 | www.thefotografer.com |
| Mexico | Turicia SA DE CV | +52 55 55 59 39 80 | www.turicia.com |
| Moldova | Rolencom Srl | +373 22 63 66 56 | www.rolencom.md |
| Morocco | Abchir | +212 522 86 44 51 | www.abchir.ma |
| Nepal | New Snapper Photo Goods | +977 1223895 | www.snapperphoto.com |
| Netherlands | Transcontinenta BV | +31 252 687 555 | www.transcontinenta.nl |
| New Zealand | Lacklands LP | +64 9 630 0753 | www.lacklands.co.nz |
| Norway | Bresson AS | +47 99 50 13 50 | www.bresson.no |
| Pakistan | Super Enterprises | +92 42 37228254 | www.camtrnx.com.pk |
| Philippines | MQ Lighting Enterprises, Inc. | +63 28908858 | www.mqlightings.com |
| Poland | FOTO 7 S.C. | 32 331 37 04 | www.foto7.pl |
| Romania | Simus Trading s.r.l. | +40 21 411 65 30 | www.simus.ro |
| Russia | Flama LLC | +7 495 646 36 60 | www.avras.ru |
| Russia | LLC Corporation DNK | +7 495 232-38-28 | www.dnk.ru |
| Saudi Arabia | Advanced Media Trading | +971 4 352 99 77 | www.amt.tv |
| Serbia | Refot B | +381 11 3087004 | www.refot.com |
| Singapore | Cathay Photo Store Pte Ltd | +65 6225 3788 | www.cathayphoto.com.sg |
| Slovenia | Cumulus d.o.o. | +386 4 2016 534 | www.cumulus.si |
| South Africa | Singer Photo | +27 11 791 2208 | www.singerphoto.co.za |
| Spain | Cromalite SL | +34 93 436 05 61 | www.cromalite.com |
| Sweden | Aifo AB | +46 8 720 06 45 | www.aifo.se |
| Switzerland | Profot AG | +41 56 675 30 60 | www.profot.ch |
| Taiwan | Cheng Seng Trading Co.,Ltd | +886 2 8511 1311 | www.chengseng.com.tw |
| Thailand | Shriro Marketing (Thailand) Limited | +66 2 792 5000 | www.shriromarketing.co.th |
| Turkey | Zoom lthalat | +90 212 269 7676 | www.zoomlthalat.com |
| Turkmenistan | Acis Distribution | +7 727 2642222 | www.acis-d.com |
| UAE | Advanced Media Trading | +971 4 352 99 77 | www.amt.tv |
| UK | Vitec Imaging Distribution | +44 (0)1530 566090 | www.manfrotto.co.uk/lastolite |
| Ukraine | Machouse LLC | +380 44 4617878 | www.manfrotto.com.ua |
| USA | Vitec Imaging Distribution Inc | +1 201 818-9500 | www.manfrotto.us/lastolite |
| Uzbekistan | Acis Distribution | +7 727 2642222 | www.acis-d.com |
| Video Dealers | | | |
| Belgium | ES Broadcast Media | +32 16 40 40 20 | www.broadcast-media |



Quality



Innovation



Portability