



Battery Bank

Setup Guide

Model: BB

Welcome to the Syrp family

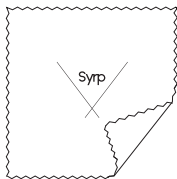
Before you start filming, there are a few simple steps to follow to ensure your Battery Bank is operated correctly and things go smoothly.

This guide will walk you through the correct Battery Bank set up, as well as some helpful tips.

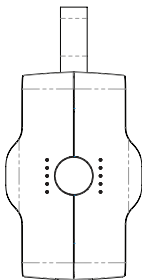
Additional resources can be found at
support.syrp.co.nz

What's in the Box

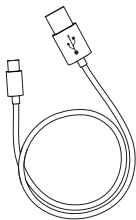
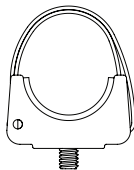
Micro Fiber Cloth



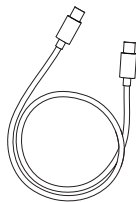
Charger



Tripod Clamp

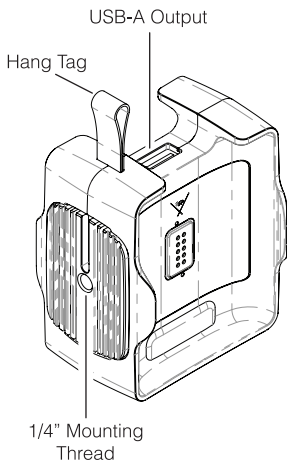
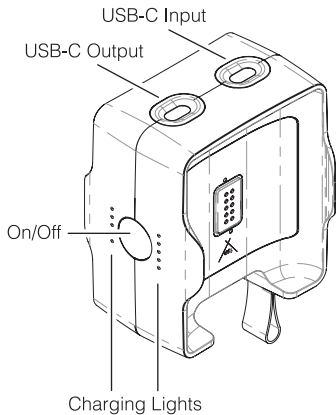


USB-C to USB-A
Male Cable

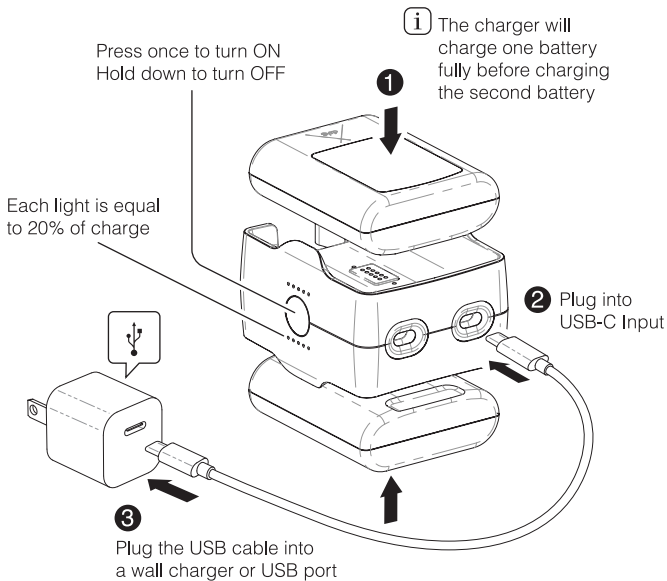


USB-C to USB-C
Cable

Battery Bank Interface



Charging Batteries



Charging Devices

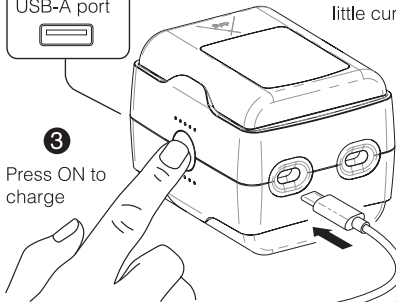
You can also charge via USB-A port



i The USB-A port auto turns off if a device is drawing little current (<50mA)

3

Press ON to charge

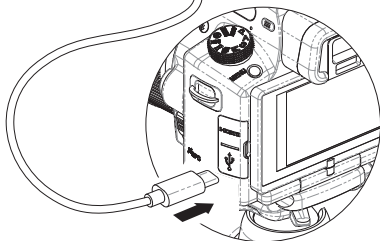


1

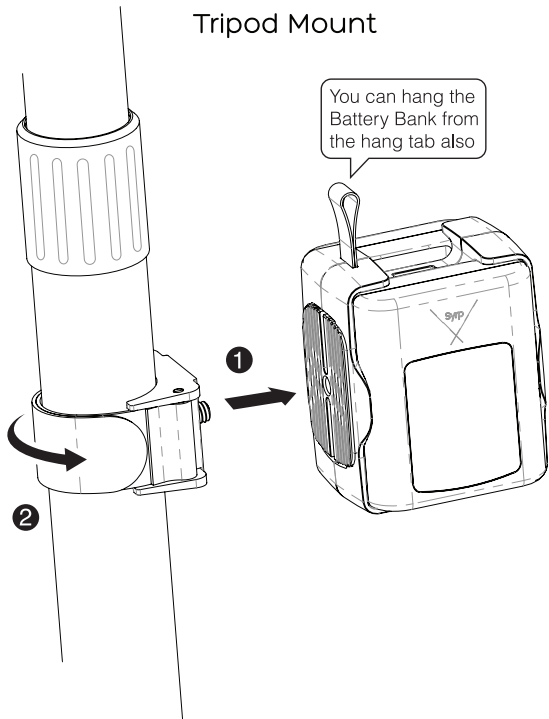
Plug into either the USB-C Output or USB-A Output

2

Plug into your devices charge port



Tripod Mount



Lithium Battery Tips

- Avoid exposing your batteries to elevated temperatures. So, don't leave them in a hot car, in direct sun or next to other devices that generate heat. Also try to avoid exposure to extreme cold.
- Limiting the amount of times your batteries discharge below 20% will extend their life.
- Ideally, store your batteries with approximately 60% charge to maintain good battery health.

Stay in Touch

We hope that the Battery Bank helps to expand your creativity and assists in making better films. Please stay in touch with us, join our community and show us your work.

www.syrp.co



youtube.com/syrptube



vimeo.com/syrp



instagram.com/syrp_



facebook.com/syrp.co.nz



twitter.com/syrp_



syrp@syrp.co.nz



better films.